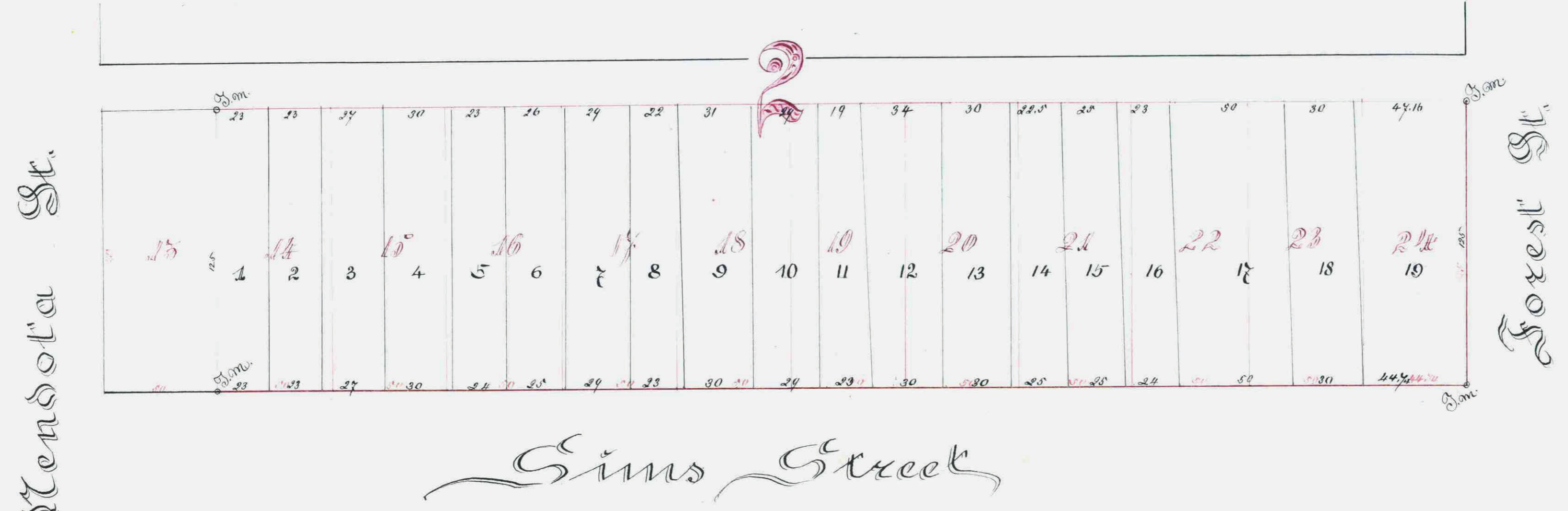


Chas. Weide's Rearrangement of Lots 14 to 24 inclusive of Block 2 of Nelsons Addition to the City of St. Paul

STATE OF MINNESOTA, ss.
County of Ramsey,
OFFICE OF THE REGISTER OF DEEDS.
This is to certify that the within instrument was filed for Record in this office, at St. Paul, on the 22nd day of June, A. D. 1885 at 10 o'clock A. M., and that the same was duly recorded in Book X of Plate pages 29
By Richard Register of Deeds.
Deputy.



I hereby certify to having surveyed and platted the property described on this map as Chas. Weide's Rearrangement of Lots 14 to 24 inclusive of Block 2 of Nelsons Addition to the City of St. Paul and have placed iron monuments at the corners of said Rearrangement as shown on this map and the same is correct.

Ed. Hoenek
Surveyor

State of Minnesota } S.S.
County of Ramsey }
On this 4th day of June 1885 personally appeared before the undersigned Ed. Hoenek to me well known, and acknowledged, that he executed the foregoing Certificate as his own free act and deed.

Ed. Hoenek
Notary Public
Ramsey County Minnesota

This is to certify that Chas. Weide and Louisa Weide, his wife, proprietors of Lots 14 to 24 inclusive, of Block 2 of Nelsons Addition to the City of St. Paul, have caused the same to be surveyed and platted, and hereafter known as Chas Weide's Rearrangement of Lots 14 to 24 inclusive, of block 2 of Nelsons Addition, to the City of St. Paul as shown by this plat.

State of Minnesota } S.S.
County of Ramsey }
On this 5th day of June 1885 personally came before me the undersigned Chas. Weide and Louisa Weide his wife to me well known and they acknowledged, that they executed the foregoing certificate for the uses or purposes therein expressed.

Accepted and approved this 16th day of June 1885

J. S. Tolson }
J. A. Starkey } Plat Commission

Accepted by the common council of the City of St. Paul on the 16th day of June 1885

Wm. McCullough
City Clerk

I hereby recommend the acceptance of the within plat by the common Council

Lilly Engineer

Witness our hands and seals this 15th day of June 1885
In presence of Charles A. Weide
Louisa Weide.

Wm. F. Schumacher
Notary Public
Ramsey Co. Minn.

June 13th 1885
Facts paid
James O'Brien
County Auditor
Per J. B. Inglesby Deputy

This plat document is an UNOFFICIAL copy of a Subdivision Plat or Registered Land Survey and is made available for information purposes only.
To obtain an official copy please contact the Ramsey County Recorder's Office.