

S - V ADDITION

Know All Persons By These Presents that S-V Development Co., a Minnesota partnership, owners and The Minister's Life and Casualty Union, a Minnesota corporation, mortgagee of the following described property situated in the City of Shoreview, Ramsey County, Minnesota:

That part of Outlot C, SHOREVIEW HILLS, Ramsey County, Minnesota lying South of a line beginning at a point on the East line of said Outlot C distant 975 feet North of the Southeast corner of the SW 1/4 of the SW 1/4 of Section 14, Township 30, Range 23; thence West parallel with the South line of said SW 1/4 of the SW 1/4 and to the West line of said Outlot C and said line there terminating and excepting the North 231 feet thereof.

Have caused the same to be surveyed, platted and known as S-V ADDITION and does hereby dedicate to the public for public use forever the utility easements as shown on the plat.

S-V Development Co., a Minnesota partnership, has caused these presents to be signed by its proper partners this 31st day of JAN, 19 86.

Signed:

S-V Development Co., a Minnesota partnership
Craig E. Vollhaber its Managing Partner Paul M. Lubratt its MANAGING PARTNER

The Minister's Life and Casualty Union, a Minnesota corporation, has caused these presents to be signed by its proper officer and its corporate seal to be hereunto affixed this 26th day of FEB, 19 86.

Signed:

The Minister's Life and Casualty Union, a Minnesota corporation
Kevin J. Stangler its Vice President

STATE OF MINNESOTA)
COUNTY OF RAMSEY) ss

The foregoing instrument was acknowledged before me this 31st day of JAN, 19 86, by CRAIG E. VOLLHABER, MANAGING PARTNER and by PAUL M. LUBRATT, MANAGING PARTNER of S-V Development Co. a Minnesota partnership, on behalf of the partnership.

Darlene J. Hartung
Notary Public, Ramsey County, Minnesota
My Commission Expires 11/17/91

STATE OF MINNESOTA)
COUNTY OF HENNEPIN) ss

The foregoing instrument was acknowledged before me this 26th day of FEBRUARY, 19 86, by KEVIN J. STANGLER, VICE PRESIDENT of The Minister's Life and Casualty Union, a Minnesota corporation, on behalf of the corporation.

Robert A. Stangl
Notary Public, HENNEPIN County, Minnesota
My Commission Expires Oct 17, 1990

I, Donald O. Carley, hereby certify that I have surveyed and platted the property described in the dedication of this plat as S-V ADDITION; that this plat is a correct representation of said survey; that all distances are correctly shown on the plat; that all monuments have been correctly placed in the ground as shown; that the outside boundary lines are correctly designated on the plat; and there are no wet lands, easements or public highways other than as shown thereon.

Donald O. Carley
Donald O. Carley, Registered Land Surveyor
Minnesota Registration No. 3527

STATE OF MINNESOTA)
COUNTY OF RAMSEY) ss

The Surveyor's Certificate was subscribed and sworn to before me, a Notary Public, this 3 day of December, 19 85.

Shirley J. Lundberg
Notary Public, Ramsey County, Minnesota
My Commission Expires 4-28-1991

Approved and accepted by the City Council of the City of Shoreview, Minnesota, this 17th day of March, 19 86.

Richard A. Wedell Mayor
Long E. Dubois Clerk

Taxes for the year 1986 on land described herein paid, no delinquent taxes and transfer entered, this 6 day of June, 19 86.

Don McKenna Director
Department of Property Taxation By D. McDonough Deputy

Pursuant to Chapter 7, Minnesota Laws of 1976, this plat has been reviewed and approved, this 4th day of June, 19 86, and the conditions of Minnesota Statutes, Section 505.03, Subdivision 2, have been fulfilled.

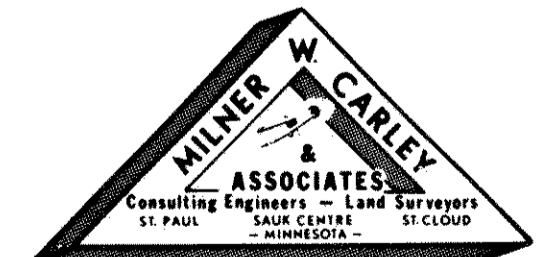
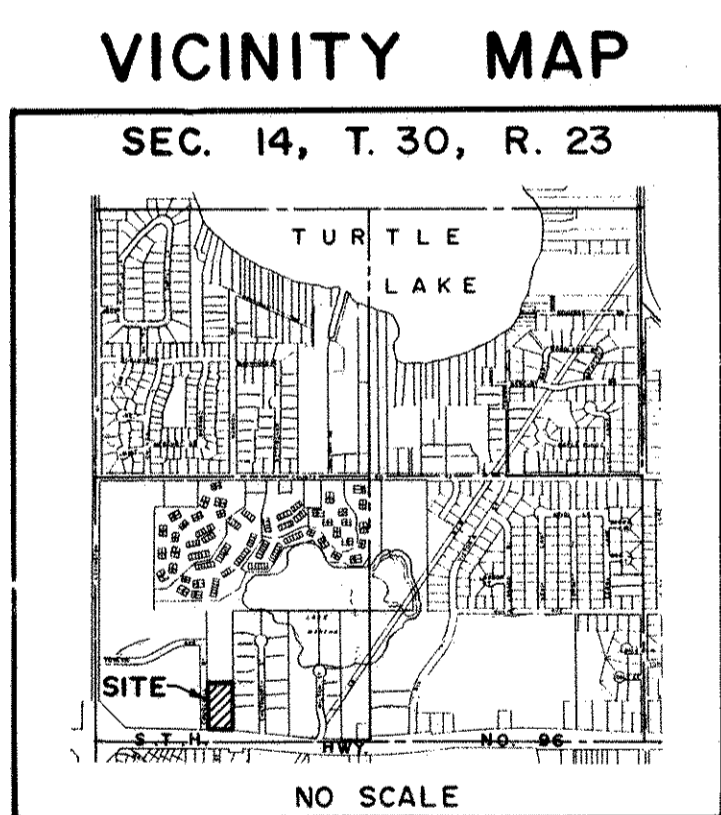
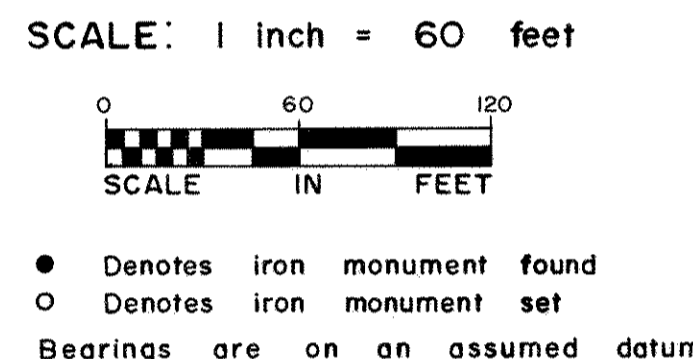
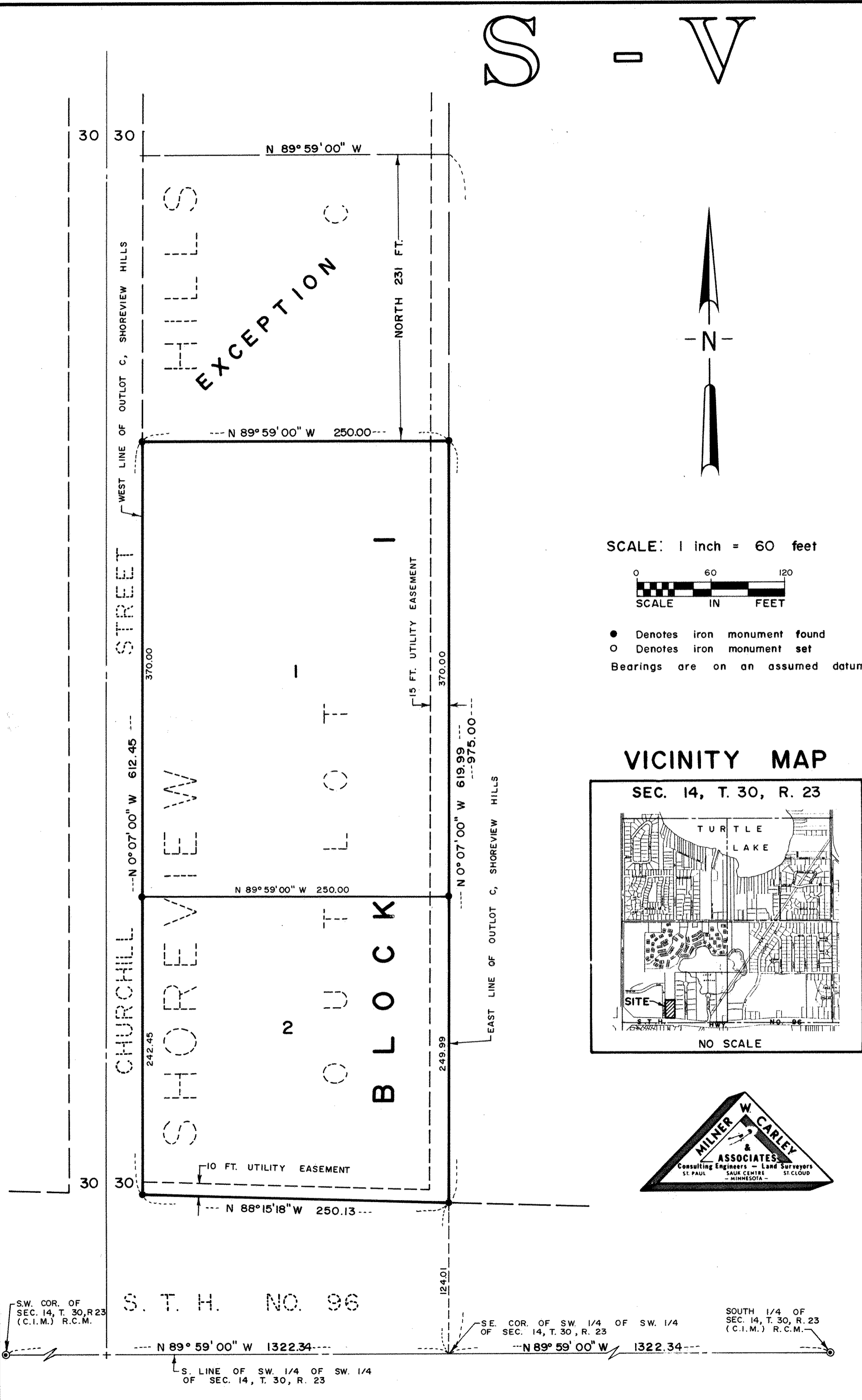
David D. Claypool
David D. Claypool
Acting Ramsey County Surveyor

County Recorder, County of Ramsey, State of Minnesota

I hereby certify that this plat of S-V ADDITION was filed in this office this 1st day of JULY, 19 86 at 3:38 o'clock P.M. and was filed in Book 99 of Plats, Page 26, as Document No. 2320312.

John C. McLaughlin, County Recorder

By _____ Deputy



S.W. COR. OF SEC. 14, T. 30, R. 23 (C.I.M.) R.C.M.
S. T. H. NO. 96
N 89° 59' 00" W 1322.34

S.E. COR. OF SW 1/4 OF SW 1/4 OF SEC. 14, T. 30, R. 23 (C.I.M.) R.C.M.
N 89° 59' 00" W 1322.34

SOUTH 1/4 OF SEC. 14, T. 30, R. 23 (C.I.M.) R.C.M.
N 89° 59' 00" W 1322.34

S. LINE OF SW 1/4 OF SW 1/4 OF SEC. 14, T. 30, R. 23