

BIRCH LAKE SQUARE

Know All Persons By These Presents that Birch Lake Square Limited Partnership, a Minnesota Limited Partnership, owner, and First National Bank of Minneapolis, a National Banking Association, mortgagee, of the following described property situated in the City of White Bear Lake, Ramsey County, Minnesota:

Tract A, Registered Land Survey No. 355, files of the Registrar of Titles, County of Ramsey.

The east 155 feet of the west 915 feet of that part of the Northwest Quarter of the Northwest Quarter of Section 22, Township 30, Range 22, Ramsey County, Minnesota, lying northwesterly of the Birch Lake Boulevard.

Have caused the same to be surveyed, platted and known as BIRCH LAKE SQUARE and do hereby dedicate to the public for public use forever the highway as shown on the plat.

In witness whereof said Birch Lake Square Limited Partnership, a Minnesota Limited Partnership, has caused these presents to be signed by its Sole General Partner this 6th day of March, 1986. In witness whereof said First National Bank of Minneapolis, a National Banking Association, has caused these presents to be signed by its proper officers and its corporate seal to be hereunto affixed this 2nd day of April, 1986.

SIGNED: Birch Lake Square Limited Partnership
Clayton G. Rein Sole General Partner
Clayton G. Rein

First National Bank of Minneapolis
Leo J. Reuder Vice President
Leo J. Reuder
Gregory L. Nilson Assistant Vice President
Gregory L. Nilson

STATE OF MINNESOTA) COUNTY OF Dakota) ss The foregoing instrument was acknowledged before me this 6th day of March, 1986, by Clayton G. Rein, Sole General Partner of Birch Lake Square Limited Partnership, a Minnesota Limited Partnership, on behalf of the partnership.

Theodore L. Zimmerman Jr.
Notary Public, Dakota County, Minnesota
My Commission Expires August 5, 1990

STATE OF MINNESOTA) COUNTY OF Dakota) ss The foregoing instrument was acknowledged before me this 2nd day of April, 1986, by Leo J. Reuder, Vice President and by Gregory L. Nilson, Assistant Vice President of First National Bank of Minneapolis, a National Banking Association, on behalf of the association.

Theodore L. Zimmerman Jr.
Notary Public, Dakota County, Minnesota
My Commission Expires August 5, 1990

I, Vernon A. Nickols, hereby certify that I have surveyed and platted the property described in the dedication of this plat as BIRCH LAKE SQUARE; that this plat is a correct representation of said survey; that all distances are correctly shown on the plat; that all monuments have been correctly placed in the ground as shown; that the outside boundary lines are correctly designated on the plat; and there are no wet lands or public highways other than as shown thereon.

Vernon A. Nickols
Land Surveyor - Minnesota Registration No. 9053

STATE OF MINNESOTA) COUNTY OF HENNEPIN) ss The Surveyor's Certificate was subscribed and sworn to before me, a Notary Public, this 23rd day of OCTOBER, 1985.

Chris Kuntz
Notary Public, Hennepin County, Minnesota
My Commission Expires March 3, 1989

Approved and accepted by the City Council of the City of White Bear Lake, Minnesota, this 29th day of April, 1986.

Donald S. Briggs Mayor
Raymond R. Liebenthal Clerk

Taxes for the year 1986 on the land described herein paid, no delinquent taxes and transfer entered, this 11th day of June, 1986.

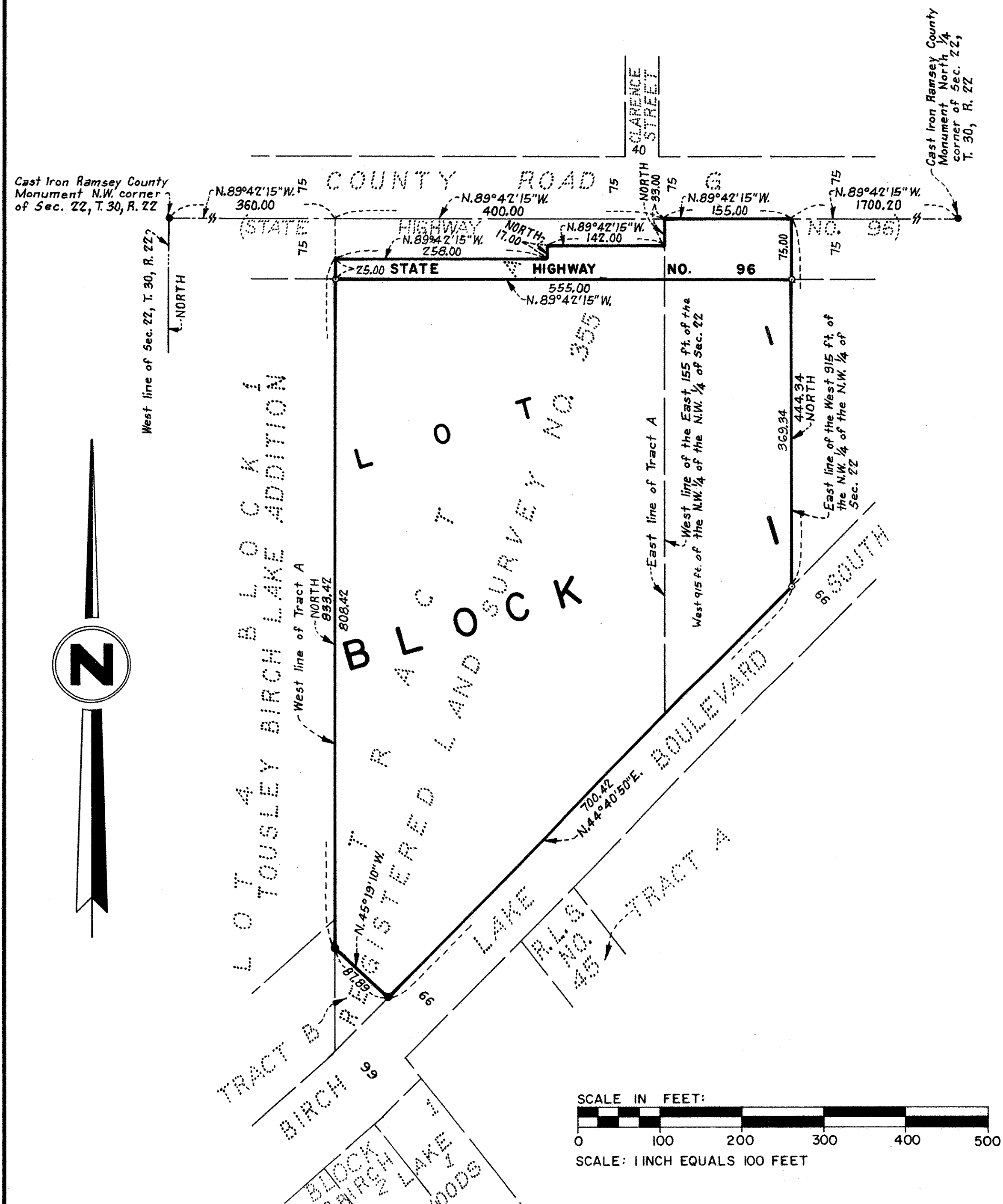
Law McKenna Director
Department of Property Taxation
By R. J. Sog Deputy

Pursuant to Chapter 7, Minnesota Laws of 1976, this plat has been reviewed and approved, this 11th day of June, 1986, and the conditions of Minnesota Statutes, Section 505.03, Subdivision 2, have been fulfilled.

David D. Claypool
David D. Claypool
Acting Ramsey County Surveyor

County Recorder, County of Ramsey, State of Minnesota
I hereby certify that this plat of BIRCH LAKE SQUARE was filed in this office this 15th day of July, 1986, at 9:15 o'clock A., M. and was filed in Book 99 of Plats, Page 25, as Document No. 2320200.

John C. McLaughlin County Recorder
By _____ Deputy



BEARINGS SHOWN ARE ON AN ASSUMED DATUM
• DENOTES IRON MONUMENT SET
• DENOTES IRON MONUMENT FOUND

EGAN, FIELD & NOWAK, INC.
SURVEYORS