

COPY

# SERENE HILLS ESTATES PLAT TWO

KNOW ALL PERSONS BY THESE PRESENTS THAT CLEMENT W. HOULE AND IONE K. HOULE, HUSBAND AND WIFE, OWNERS, AND WOODDALE BUILDERS, INC., A MINNESOTA CORPORATION, CONTRACT PURCHASER, OF THE FOLLOWING DESCRIBED PROPERTY SITUATED IN THE CITY OF SHOREVIEW, RAMSEY COUNTY, MINNESOTA:

LOTS 1 THROUGH 40, INCLUSIVE, BLOCK 5, SERENE HILLS ESTATES, RAMSEY COUNTY, MINNESOTA.

HAVE CAUSED THE SAME TO BE SURVEYED, PLATTED AND KNOWN AS SERENE HILLS ESTATES PLAT TWO AND DO HEREBY DEDICATE TO THE PUBLIC FOR PUBLIC USE FOREVER THE DRAINAGE AND UTILITY EASEMENTS AS SHOWN ON THE PLAT.

IN WITNESS WHEREOF SAID CLEMENT W. HOULE AND IONE K. HOULE, HUSBAND AND WIFE, HAVE CAUSED THESE PRESENTS TO BE SIGNED THIS 10<sup>th</sup> DAY OF October, 1985.

SIGNED:

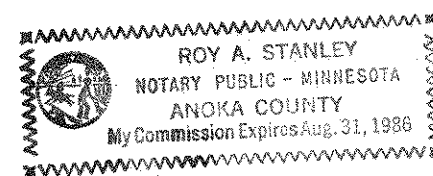
Clement W. Houle  
CLEMENT W. HOULE  
Ione K. Houle  
IONE K. HOULE

IN WITNESS WHEREOF SAID WOODDALE BUILDERS, INC., A MINNESOTA CORPORATION, HAS CAUSED THESE PRESENTS TO BE SIGNED BY ITS PROPER OFFICER AND ITS CORPORATE SEAL TO BE HEREUNTO AFFIXED THIS 10<sup>th</sup> DAY OF October, 1985.

SIGNED: WOODDALE BUILDERS, INC.

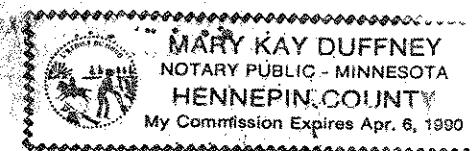
[Signature] ITS Pres.

STATE OF MINNESOTA)  
COUNTY OF Anoka)  
THE FOREGOING INSTRUMENT WAS ACKNOWLEDGED BEFORE ME THIS 10<sup>th</sup> DAY OF October, 1985,  
BY CLEMENT W. HOULE AND IONE K. HOULE, HUSBAND AND WIFE,  
BY



Roy A. Stanley  
NOTARY PUBLIC, Anoka COUNTY, MINNESOTA  
MY COMMISSION EXPIRES Aug 31, 1986

STATE OF MINNESOTA)  
COUNTY OF Ramsey)  
THE FOREGOING INSTRUMENT WAS ACKNOWLEDGED BEFORE ME THIS 10<sup>th</sup> DAY OF October, 1985, BY STEVEN H. SCHWARTZ  
OF WOODDALE BUILDERS, INC., A MINNESOTA CORPORATION, ON BEHALF OF THE CORPORATION.  
PRESIDENT



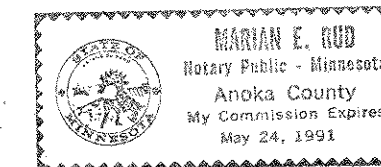
Mary Kay Duffney  
NOTARY PUBLIC, Hennepin COUNTY, MINNESOTA  
MY COMMISSION EXPIRES April 6, 1990

I, ERNEST G. RUD, HEREBY CERTIFY THAT I HAVE SURVEYED AND PLATTED THE PROPERTY DESCRIBED IN THE DEDICATION OF THIS PLAT AS SERENE HILLS ESTATES PLAT TWO; THAT THIS PLAT IS A CORRECT REPRESENTATION OF SAID SURVEY; THAT ALL DISTANCES ARE CORRECTLY SHOWN ON THE PLAT; THAT ALL MONUMENTS HAVE BEEN CORRECTLY PLACED IN THE GROUND AS SHOWN; THAT THE OUTSIDE BOUNDARY LINES ARE CORRECTLY DESIGNATED ON THE PLAT; AND THERE ARE NO WET LANDS OR PUBLIC HIGHWAYS OTHER THAN AS SHOWN THEREON.

Ernest G. Rud  
ERNEST G. RUD, LAND SURVEYOR  
MINNESOTA REGISTRATION NO. 9808

STATE OF MINNESOTA)  
COUNTY OF ANOKA )

THE SURVEYOR'S CERTIFICATE WAS SUBSCRIBED AND SWORN TO BEFORE ME, A NOTARY PUBLIC, THIS 8<sup>th</sup> DAY OF October, 1985.



Marian E. Rud  
NOTARY PUBLIC, ANOKA COUNTY, MINNESOTA  
MY COMMISSION EXPIRES MAY 24, 1991

APPROVED AND ACCEPTED BY THE CITY COUNCIL OF THE CITY OF SHOREVIEW, MINNESOTA, THIS 21<sup>st</sup> DAY OF October, 1985.

Richard A. Wedell  
MAYOR  
Henry E. Dehnen  
CLERK

TAXES FOR THE YEAR 1985 ON THE LAND DESCRIBED HEREIN PAID, NO DELINQUENT TAXES AND TRANSFER ENTERED, THIS 21 DAY OF November, 1985.

Lou McKenna, DIRECTOR  
DEPARTMENT OF PROPERTY TAXATION  
BY Sue Banknell, DEPUTY

PURSUANT TO CHAPTER 7, MINNESOTA LAWS OF 1976, THIS PLAT HAS BEEN REVIEWED AND APPROVED, THIS 2<sup>nd</sup> DAY OF December, 1985, AND THE CONDITIONS OF MINNESOTA STATUTES, SECTION 505.03, SUBDIVISION 2, HAVE BEEN FULFILLED.

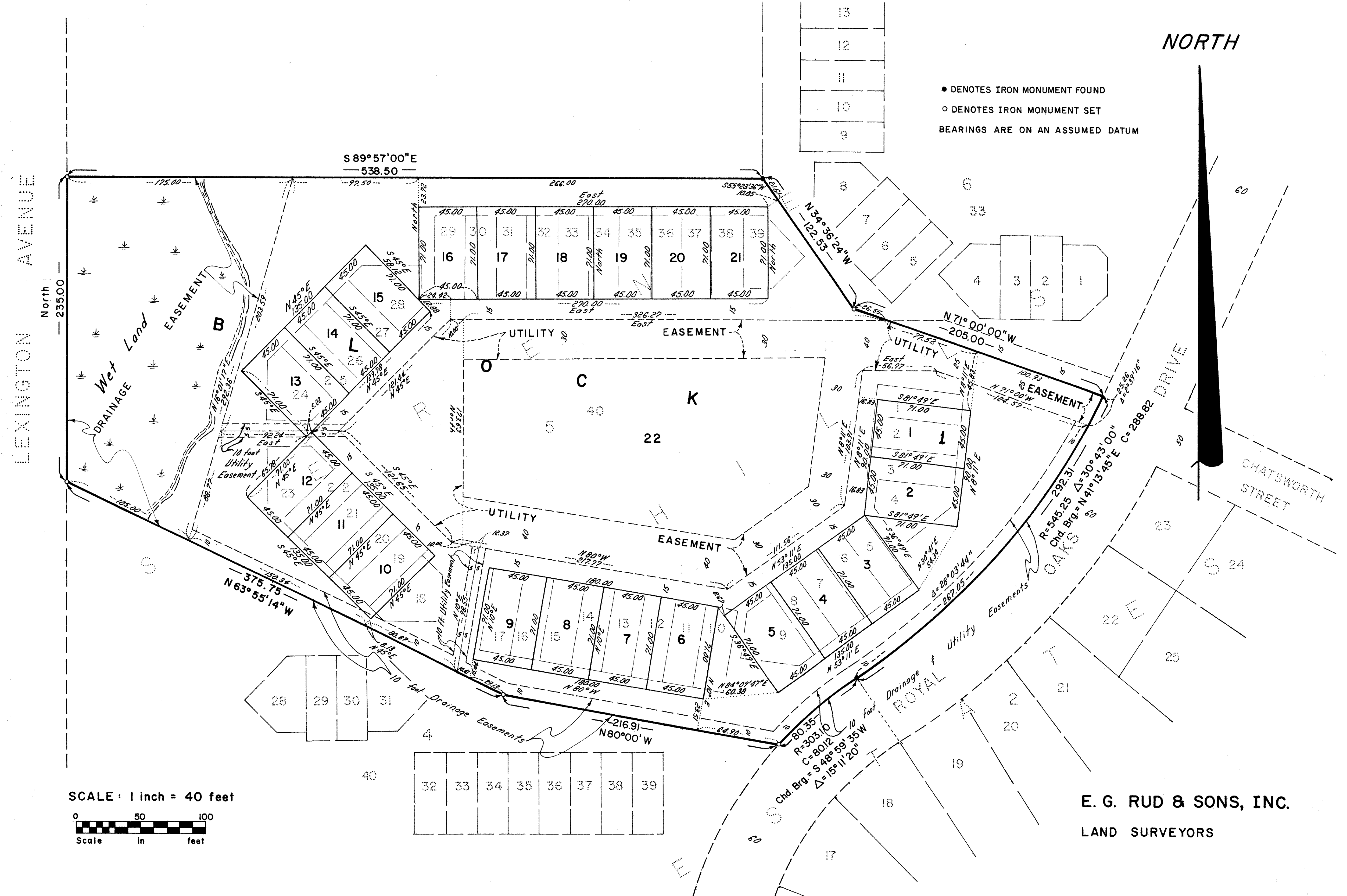
David D. Claypool  
DAVID D. CLAYPOOL, ACTING RAMSEY COUNTY SURVEYOR

COUNTY RECORDER,  
COUNTY OF RAMSEY, STATE OF MINNESOTA  
I HEREBY CERTIFY THAT THIS PLAT OF SERENE HILLS ESTATES PLAT TWO WAS FILED IN THIS OFFICE THIS 9<sup>th</sup> DAY OF DECEMBER, 1985, AT 12:15 O'CLOCK P.M. AND WAS FILED IN BOOK 98 OF PLATS, PAGES 46 AND 47, AS DOCUMENT No. 2292298.

JOHN C. MCLAUGHLIN, COUNTY RECORDER  
BY \_\_\_\_\_, DEPUTY

**E. G. RUD & SONS, INC.**  
LAND SURVEYORS

# SERENE HILLS ESTATES PLAT TWO



● DENOTES IRON MONUMENT FOUND  
 ○ DENOTES IRON MONUMENT SET  
 BEARINGS ARE ON AN ASSUMED DATUM

SCALE: 1 inch = 40 feet  
 0 50 100  
 Scale in feet

E. G. RUD & SONS, INC.  
 LAND SURVEYORS