

Know All Persons By These Presents that Advanced Training Systems, Inc., a Minnesota corporation, owner; and First Bank White Bear Lake, National Association, mortgagee of the following described property situated in the City of New Brighton, Ramsey County, Minnesota

RUSH LAKE PARK FIRST ADDITION

- Denotes Iron Monument Found, unless noted
 - Denotes Iron Monument Set, 1/2 inch by 18 inches Marked R. L. S. 12235
- Bearings are on an assumed datum.

The West 307 feet of the South 266.00 feet of the North 990 feet of the Northwest Quarter;

The West 307 feet of the North 185 feet of the South 10 acres of the Northwest Quarter lying South of the North 990 feet of said Northwest Quarter;

all in Section 21, Township 30, Range 23.

Have caused the same to be surveyed, platted and known as RUSH LAKE PARK FIRST ADDITION.

Advanced Training Systems, Inc., a Minnesota Corporation, has caused these presents to be signed by its proper officers of November, 1985 this 18th day

Signed: Edwin J. Taylor its President No Seal

STATE OF MINNESOTA
COUNTY OF Hennepin

The foregoing instrument was acknowledged before me this 18th day of November, 1985, by Edwin J. Taylor, III, President of Advanced Training Systems, Inc. a Minnesota Corporation, on behalf of the corporation.

Domino R. Johnson
Notary Public, Hennepin County, Minnesota
My Commission Expires Nov 6, 1991

First Bank White Bear Lake, National Association, has caused these presents to be signed by its proper officers and its corporate seal to be hereunto affixed this 18th day of November, 1985.

Signed: Leslie A. Tatarski its Asst. Vice Pres.
John R. Dierkes its Retail Banking Officer

STATE OF MINNESOTA
COUNTY OF Hennepin

The foregoing instrument was acknowledged before me this 18th day of November, 1985, by Leslie A. Tatarski, Assistant Vice President and by John R. Dierkes, Retail Banking Officer, First Bank White Bear Lake, National Association on behalf of the corporation.

Domino R. Johnson
Notary Public, Hennepin County, Minnesota
My Commission Expires Nov 6, 1991

I, Ronald F. Johnson, hereby certify that I have surveyed and platted the property described in the dedication of this plat as RUSH LAKE PARK FIRST ADDITION; that this plat is a correct representation of said survey; that all distances are correctly shown on the plat; that all monuments have been correctly placed in the ground as shown; that the outside boundary lines are correctly designated on the plat; and there are no wet lands, easements or public highways other than as shown thereon.

Ronald F. Johnson
Ronald F. Johnson, Land Surveyor
Minnesota Registration No. 12235

STATE OF MINNESOTA
COUNTY OF RAMSEY

The Surveyor's Certificate was subscribed and sworn to before me, a Notary Public, this 20th day of November, 1985.

Mary E. Diller
Notary Public, Ramsey County, Minnesota
My Commission Expires 9/26/1990

Approved and accepted by the City Council of the City of New Brighton, Minnesota, this 22nd day of November, 1985.

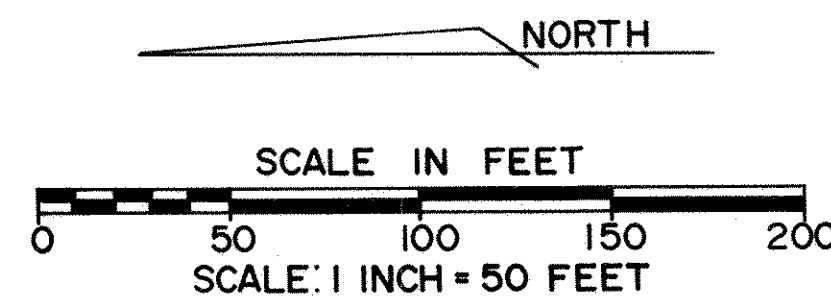
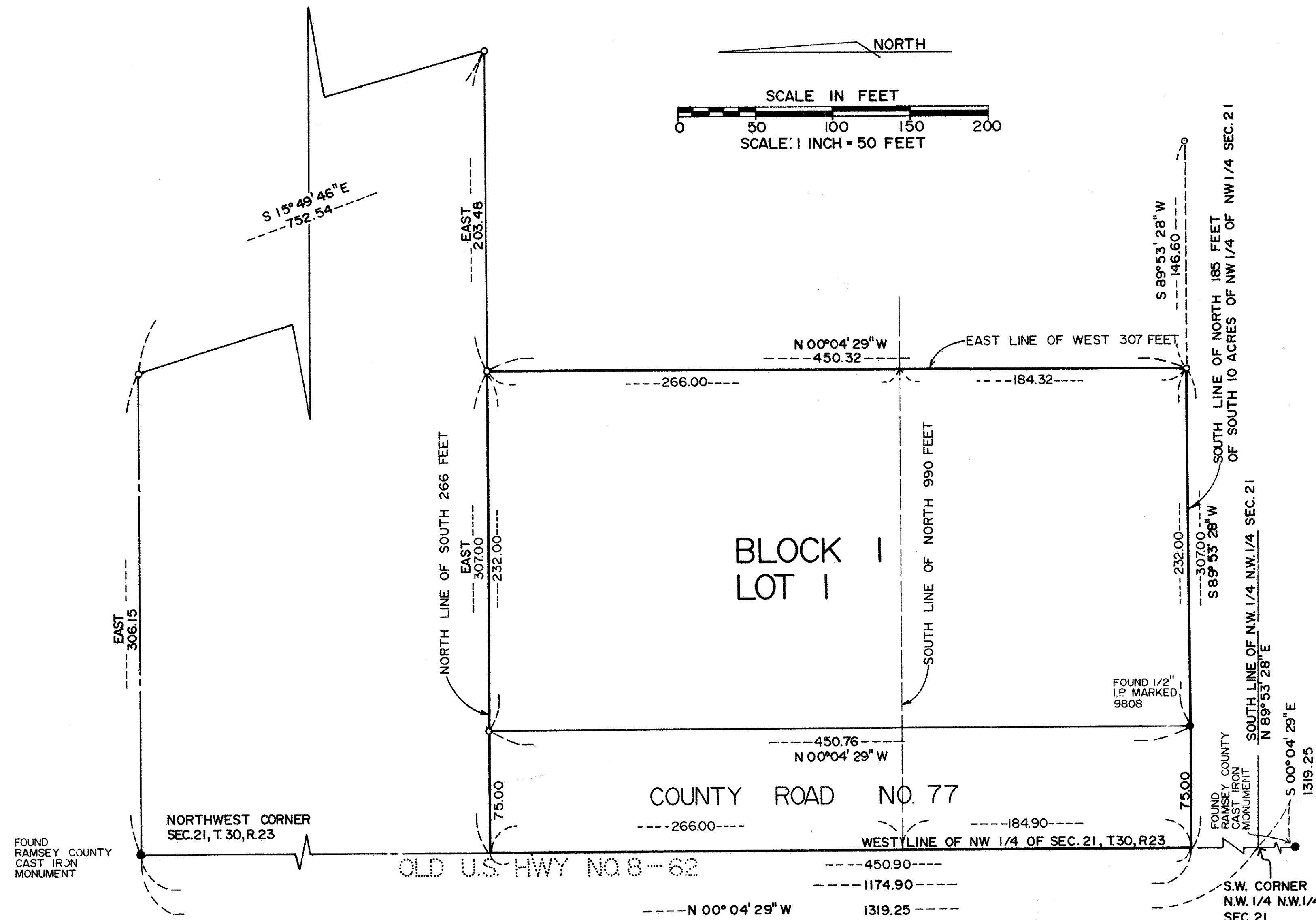
Gregory B. Warren Mayor McKeon Clerk

Taxes for the year 1985 on land described herein paid, no delinquent taxes and transfer entered, this 22nd day of November, 1985.

Law McKenna Director Shelw Anderson Deputy
Department of Property Taxation

Pursuant to Chapter 7, Minnesota Laws of 1976, this plat has been reviewed and approved, this 22nd day of November, 1985, and the conditions of Minnesota Statutes, Section 505.03, Subdivision 2, have been fulfilled.

David D. Claypool
David D. Claypool
Acting Ramsey County Surveyor



COUNTY ROAD NO. 77

OLD U.S. HWY NO 8 - 62

WEST LINE OF NW 1/4 OF SEC. 21, T.30, R.23

County Recorder, County of Ramsey, State of Minnesota

I hereby certify that this plat of RUSH LAKE PARK FIRST ADDITION was filed in this office this 4th day of DECEMBER, 1985, at 8:25 o'clock A.M. and was filed in Book 98 of Plats, Page 43, as Document No. 2291694.

By John C. McLaughlin, County Recorder Deputy

T- Doc. 791729, Book 35, Page 19