

# ROBERT TILSEN'S MAPLEWOOD HEIGHTS NO. 12

Know All Persons By These Presents that Tilsen Homes, Inc., a Minnesota corporation, owner of the following described property situated in the City of Maplewood, Ramsey County, Minnesota:

That part of the Northwest quarter of the Northwest quarter of Section 1, T. 29, R. 22 described as commencing at the Southeast corner of said Northwest quarter of the Northwest quarter; thence on an assumed bearing of West, along the South line of said Northwest quarter of the Northwest quarter, a distance of 812.39 feet to the point of beginning; thence North 0 degrees 24 minutes 01 second East a distance of 1119.67 feet to a point on the South line of Gall Avenue distant 814.83 feet West of the East line of said Northwest quarter of the Northwest quarter; thence North 88 degrees 49 minutes 37 seconds West, along said South line, a distance of 469.10 feet to the East line of McKnight Road; thence South 0 degrees 17 minutes 58 seconds West, along said East line, a distance of 1129.25 feet to the South line of said Northwest quarter of the Northwest quarter; thence East, along said South line, a distance of 467.09 feet to the point of beginning. Except the North 180.00 feet thereof.

Has caused the same to be surveyed, platted and known as ROBERT TILSEN'S MAPLEWOOD HEIGHTS NO. 12, and does hereby dedicate to the public for public use forever the Place, Avenue and Road and drainage and utility easements as shown on the plat.

Tilsen Homes, Inc., a Minnesota corporation, has caused these presents to be signed by its proper officers this 20<sup>th</sup> day of June, 19 85.

Signed: Tilsen Homes, Inc.

Robert S. Tilsen its President  
Robert S. Tilsen

James A. Tilsen its Vice President  
James A. Tilsen

STATE OF MINNESOTA

COUNTY OF Ramsey

The foregoing instrument was acknowledged before me this 20<sup>th</sup> day of June, 19 85, by Robert S. Tilsen, President and by James A. Tilsen, Vice President of Tilsen Homes, Inc., a Minnesota corporation, on behalf of the corporation.

Max Leibman  
Notary Public, Ramsey County, Minnesota  
My Commission Expires March 16, 1986

I, Donald D. Dethlefs, hereby certify that I have surveyed and platted the property described in the dedication of this plat as ROBERT TILSEN'S MAPLEWOOD HEIGHTS NO. 12; that this plat is a correct representation of said survey; that all distances are correctly shown on the plat; that all monuments have been correctly placed in the ground as shown; that the outside boundary lines are correctly designated on the plat; and there are no wet lands, easements or public highways other than as shown thereon.

Donald D. Dethlefs  
Land Surveyor - Minnesota Registration No. 13600

STATE OF MINNESOTA

COUNTY OF DAKOTA

The Surveyor's Certificate was subscribed and sworn to before me, a Notary Public, this 18<sup>th</sup> day of June, 19 85.

Gregory Brick  
Notary Public - MINNESOTA  
RAMSEY COUNTY  
My commission expires March 29, 1990

Gregory Brick  
Notary Public, Ramsey County, Minnesota  
My Commission Expires March 29, 1990

Approved and accepted by the City Council of the City of Maplewood, Minnesota, this 24<sup>th</sup> day of June, 19 85.

John Green Mayor  
Louise E. Russell Clerk

Taxes for the year 1985 on land described herein paid, no delinquent taxes and transfer entered, this 26<sup>th</sup> day of June, 19 85.

Low McKenna Director By B. J. Sayl Deputy  
Department of Property Taxation

Pursuant to Chapter 7, Minnesota Laws of 1976, this plat has been reviewed and approved, this \_\_\_\_\_ day of \_\_\_\_\_, 19 \_\_\_\_\_, and the conditions of Minnesota Statutes, Section 505.03, Subdivision 2, have been fulfilled.

David D. Claypool, Acting Ramsey County Surveyor

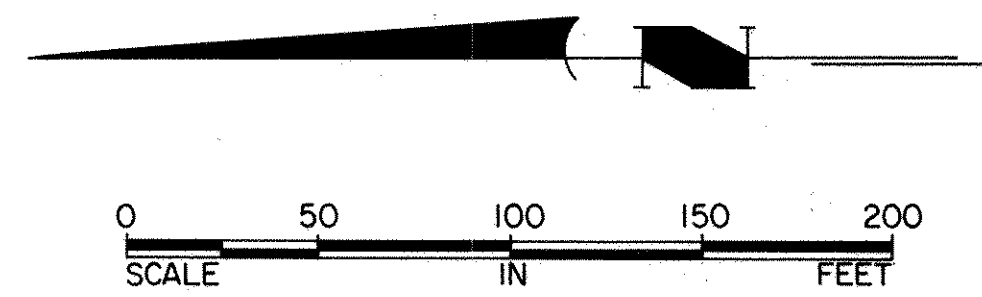
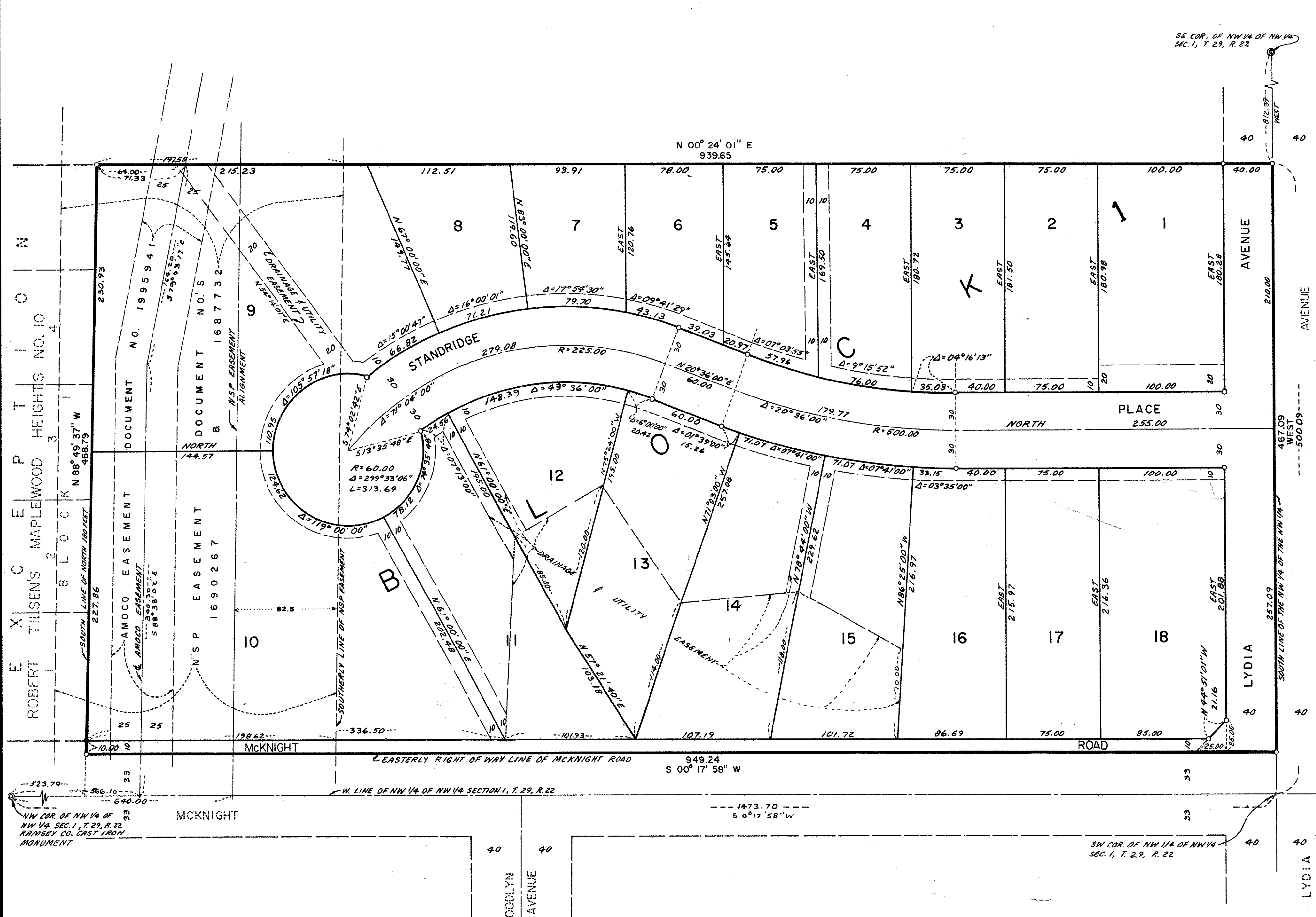
County Recorder, County of Ramsey, State of Minnesota

I hereby certify that this plat of ROBERT TILSEN'S MAPLEWOOD HEIGHTS NO. 12 was filed in this office this 3<sup>RD</sup> day of JULY, 19 85, at 3:38 o'clock P.M., and was filed in Book 98 of Plats, Pages 9 and 10, as Document No. 2272443.

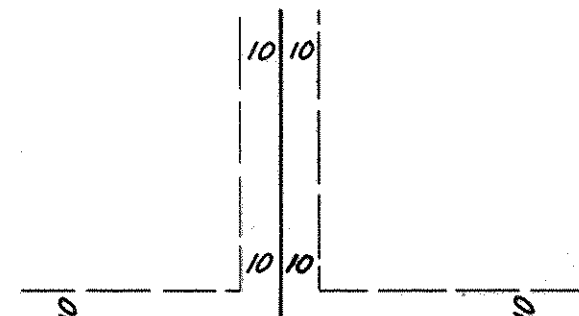
John C. McLaughlin, County Recorder By \_\_\_\_\_ Deputy

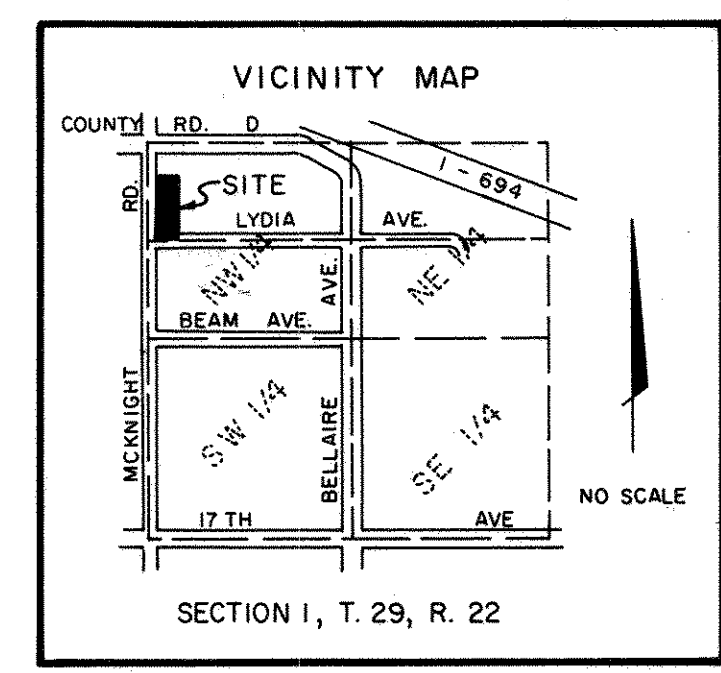
**P**ROBE  
ENGINEERING  
COMPANY, INC.  
CONSULTING ENGINEERS,  
PLANNERS and LAND SURVEYORS  
1000 EAST 146th STREET, BURNSVILLE, MINNESOTA 55337 PH 432-3000

# ROBERT TILSEN'S MAPLEWOOD HEIGHTS NO. 12



● DENOTES IRON MONUMENT FOUND  
 ○ DENOTES 1/2 INCH BY 18 INCH MONUMENT SET MARKED WITH REGISTRATION NO. 13600  
 THE SOUTH LINE OF THE NW 1/4 OF THE NW 1/4 HAS AN ASSUMED BEARING OF WEST.

DRAINAGE AND UTILITY EASEMENTS ARE SHOWN THUS:  
  
 BEING 10 FEET IN WIDTH, UNLESS OTHERWISE SHOWN AND ADJOINING STREET LINES, AND 10 FEET IN WIDTH ADJOINING LOT LINES WHERE SHOWN ON THE PLAT.



**PROBE ENGINEERING COMPANY, INC.**  
 CONSULTING ENGINEERS, PLANNERS and LAND SURVEYORS  
 1000 EAST 146th STREET, BURNSVILLE, MINNESOTA 55337 PH 432-3000