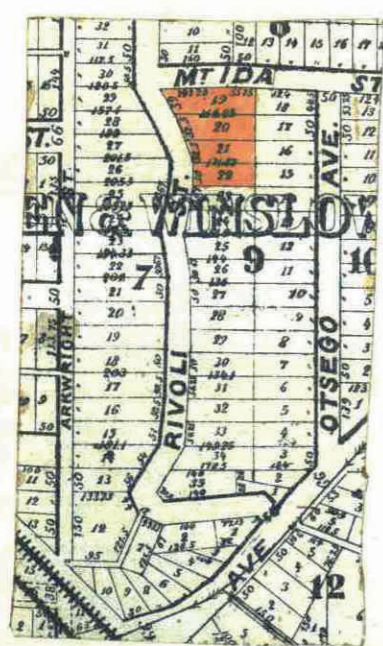
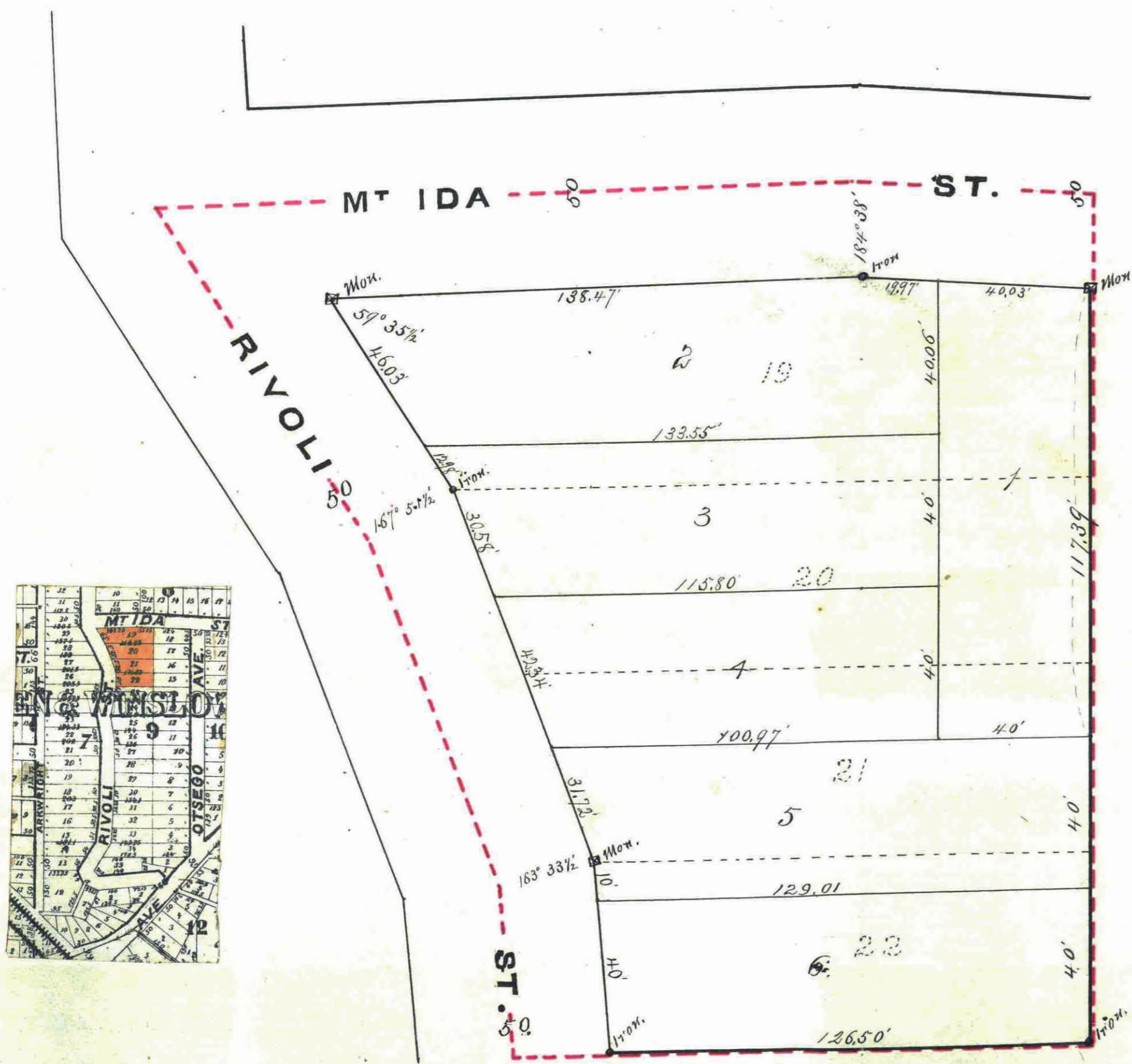


# W. A. VAN SYLKE'S RE-ARRANGEMENT

## OF LOTS 19, 20, 21 & 22, BLOCK 9

### Warren & Winslow's Add.

SCALE 1 INCH = 30 FEET.



This is to certify that we William A. Van Sylke and Mary S. Van Sylke, <sup>his wife</sup> are the proprietors and owners of Lots 19, 20, 21 and 22, Block 9 "WARREN and WINSLOW'S Addition to St. Paul" as the same is recorded in the office of the Register of Deeds Ramsey County Minn. and that we have caused the same to be surveyed and platted, and hereafter known as W. A. Van Sylke's Re-arrangement of Lots 19, 20, 21 and 22, Block 9 "Warren and Winslow's Add" as shown by this plat, and hereby dedicate to the public, and for the public use forever all the streets as hereon indicated.

Witness our hands and seals this 7<sup>th</sup> day of May A.D. 1885.

In presence of  
W. D. Condit }  
Theo. E. Parker }

William A. Van Sylke } Seal  
Mary S. Van Sylke } Seal

State of Minnesota, } ss. On this 2<sup>nd</sup> day of May A.D. 1885 personally appeared before me, the under-  
County of Ramsey, } signed William A. Van Sylke and Mary S. Van Sylke his wife to me well known  
and acknowledged that they executed the foregoing certificate, as their  
own free act and deed, for the uses and purposes therein expressed.

Theo. E. Parker  
Notary Public  
Ramsey Co Minn.

Accepted and approved  
this 2<sup>nd</sup> day of May A.D. 1885. }  
S. J. Holm } PLAT  
James Starkey } Commission  
Wm. A. Van Sylke }

I hereby recommend the acceptance of the within plat by the Common Council.  
May 7, 1885  
L. W. Ruedell  
City Engineer

Accepted by the Common Council of the City of St. Paul on the 7<sup>th</sup> day of May 1885.  
Wm. A. Van Sylke  
City Clerk.

St. Paul Minn. July 1<sup>st</sup> 1885  
Taxes Paid

St. Paul Minn. July 1<sup>st</sup> 1885.  
Assessments Paid Geo. Reis

City Treasurer, *Wickel*  
St. Paul, Minn.

James O'Brien  
County Auditor,  
Ramsey Co.  
Minn.

I hereby certify to having surveyed and platted the property as described on this map as W. A. Van Sylke's Re-arrangement of Lots 19, 20, 21 & 22, Block 9 Warren and Winslow's Add and have placed iron monuments at the corners indicated, there being granite monuments at the corners hereon shown.  
D. L. Curtice,  
Surveyor.

State of Minnesota, } ss. On this 2<sup>nd</sup> day of May A.D. 1885 personally appeared before me  
County of Ramsey, } the undersigned D. L. Curtice to me well known, and acknowledged that  
he executed the foregoing certificate as his own free act and deed.

James Starkey  
Notary Public  
Ramsey County  
Minn.

This plat document is an UNOFFICIAL copy of a Subdivision Plat or Registered Land Survey and is made available for information purposes only.

To obtain an official copy please contact the Ramsey County Recorder's Office.

STATE OF MINNESOTA, } ss.  
County of Ramsey, }  
OFFICE OF THE REGISTER OF DEEDS.  
This is to certify that the within instrument was filed for Record in this office, at St. Paul, on the 2<sup>nd</sup> day of May A. D. 1885 at 3 o'clock P. M., and that the same was duly recorded in Book X of Plats pages 33  
R. C. Wickel  
Register of Deeds.  
By Deputy.

ST. PAUL, MINN.  
CITY TREASURER'S OFFICE  
ASSESSMENTS PAID  
JUL 2 1885