

I take of Minnesota }
County Ramsey }
day of April 1882 }
under and a }
me will remain }
in and when }
of street, }
specify to the }
upon this map }
Wm. C. Orr being }
Military Public }
Railway the }
mine }

This plat document is an UNOFFICIAL copy of a Subdivision Plat or Registered Land Survey and is made available for information purposes only.



To obtain an official copy please contact the Ramsey County Recorder's Office.

CONSTANS' ADDITION

ST PAUL.

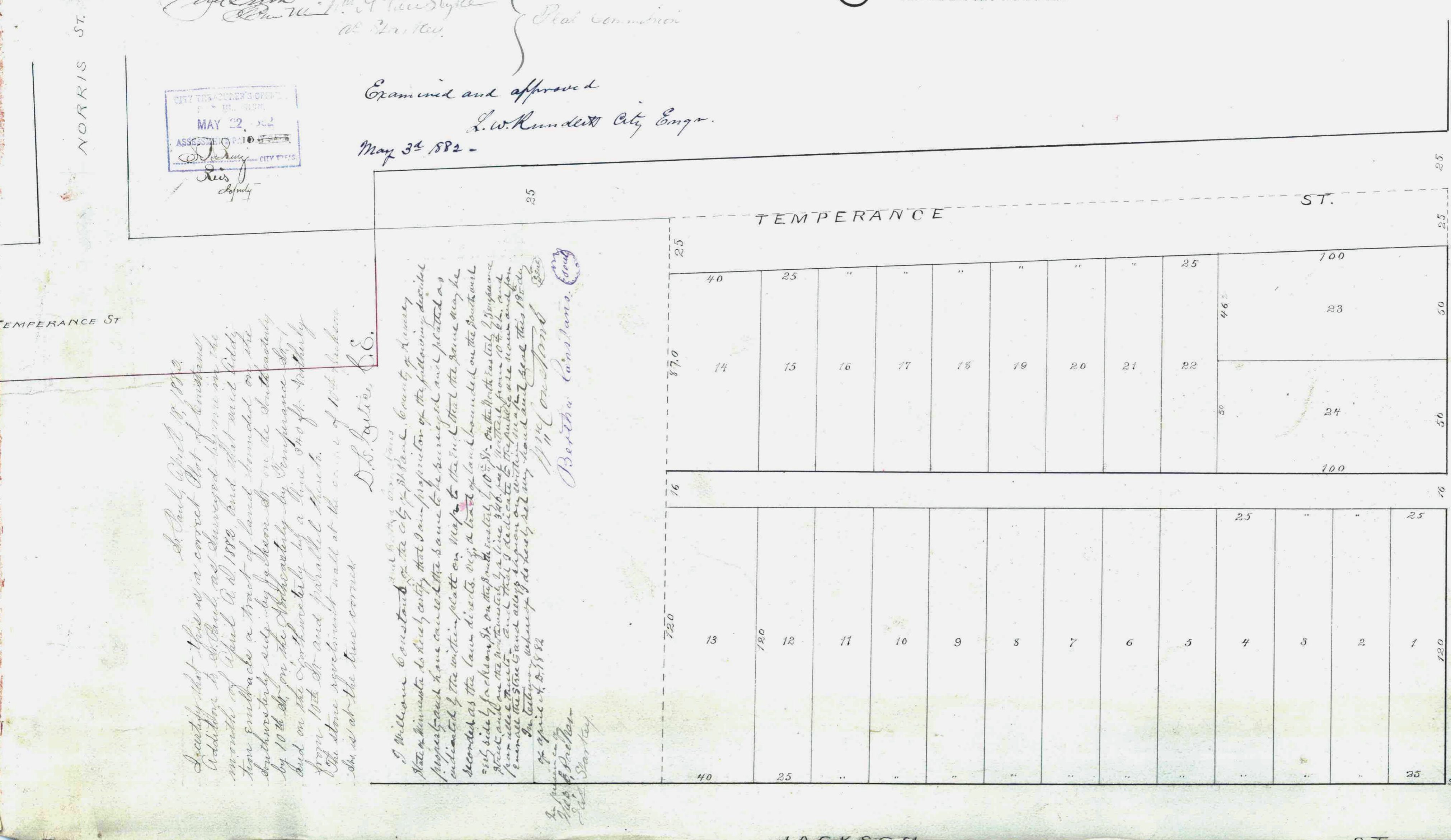
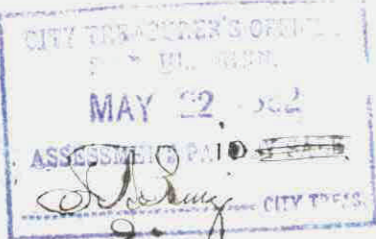
Taxes paid and
Transfer Entered
May 22nd 1884

J. M. Leedy
County Auditor

Accepted
By Common Council
of the City of St. Paul
May 16, 1882
Approved this 19th day of April
1882.
S. J. Johnson
J. W. Vanduyke
at St. Paul.

Plat Commission

Examined and approved
L. W. Kunder City Engr.
May 3^d 1882 -



Acquiesce that this is a correct Plat of Constans' Addition to St. Paul, as surveyed by me in the month of April A. D. 1882, and that said City have struck a tract of land bounded on the north and east by Jackson St. on the south and west by the Addition by Temperance St. and on the north and east by a line 300 ft. width from 11th St. and parallel thereto. The stone monument wall at the corner of 11th and Jackson St. is at the true corner.

D. S. Bates, C. E.
I William Constans of the City of St. Paul, County of Ramsey State of Minnesota do hereby certify that I am proprietor of the following described property and have caused the same to be surveyed and plotted as indicated by the within plat on 11th St. to the end that the same may be recorded as the laws direct. My plat of land bounded on the south and east sides by Jackson St. on the north and west sides by 11th St. and on the north and west sides by a line 300 ft. width from 11th St. and parallel thereto. I am also the owner of the same and have caused the same to be surveyed and plotted as indicated by the within plat on 11th St. to the end that the same may be recorded as the laws direct. My plat of land bounded on the south and east sides by Jackson St. on the north and west sides by 11th St. and on the north and west sides by a line 300 ft. width from 11th St. and parallel thereto. I am also the owner of the same and have caused the same to be surveyed and plotted as indicated by the within plat on 11th St. to the end that the same may be recorded as the laws direct.

