

WLASCHIN ADDITION

Know All Persons By These Presents that the First Trust Company of Saint Paul as Personal Representative of the Estate of Walter Wlaschin, deceased, owner, of the following described property situated in the City of Saint Paul, Ramsey County, Minnesota:

Lots 15, 16 and 17, Block 11, "Foundry Addition" to St. Paul, except 16 foot railroad right-of-way described in 717 Deeds 236, recorded in the office of the Register of Deeds in and for Ramsey County, Minnesota, and subject to Como Avenue.

Has caused the same to be surveyed, platted and known as WLASCHIN ADDITION and do hereby dedicate to the public for public use forever the avenue as shown on the plat.

Have hereunto set our hands this 4th day of MAY, 1985.

FIRST TRUST COMPANY OF SAINT PAUL

By Thomas J. O'Meara
Thomas J. O'Meara, Vice President
as personal representative of the
Estate of Walter Wlaschin, deceased

State of Minnesota
County of RAMSEY

The foregoing instrument was acknowledged before me this 9th day of may, 1985, by Thomas J. O'Meara, Vice President of First Trust Company of Saint Paul, a Minnesota Corporation, personal representative of the estate of Walter Wlaschin, deceased, on behalf of the Estate.

David W. Larson
Notary Public, ANOKA County, Minnesota
My Commission Expires 2/19/87

I, Delmar H. Schwanz, hereby certify that I have surveyed and platted the property described in the dedication of this plat as WLASCHIN ADDITION, that this plat is a correct representation of said survey; that all distances are correctly shown on the plat; that all monuments have been correctly placed in the ground as shown; that the outside boundary lines are correctly designated on the plat; and there are no wet lands, easements or public highways other than as shown thereon.

Delmar H. Schwanz
Delmar H. Schwanz, Land Surveyor
Minnesota Registration No. 8625

State of Minnesota
County of Dakota

The Surveyor's Certificate was subscribed and sworn to before me, a Notary Public, this 8th day of APRIL, 1985.

Frances J. Seasholtz
Notary Public, Dakota County, Minnesota
My Commission Expires 1-9-91

Approved and accepted by the City Council of the City of Saint Paul, Minnesota, this 8th day of MAY, 1985.

Albert B. Olson
Clerk

Taxes for the year 1985 on land described herein paid, no delinquent taxes and transfer entered, this 9th day of May, 1985.

Low McKenna Director By R. J. Seigl Deputy
Department of Property Taxation

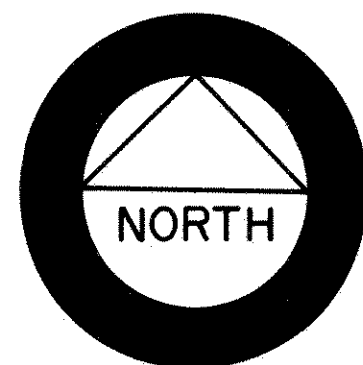
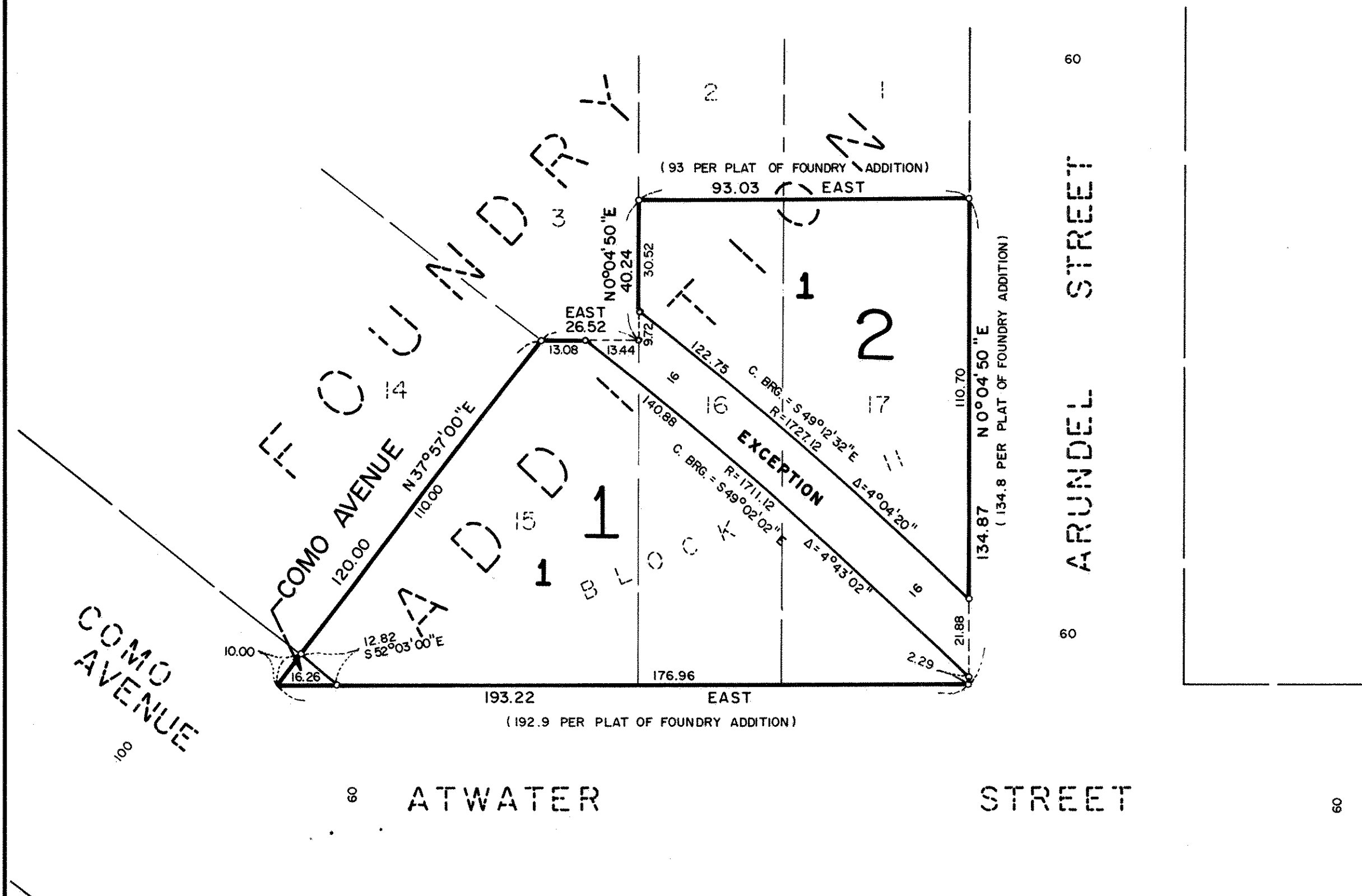
Pursuant to Chapter 7, Minnesota Laws of 1976, this plat has been reviewed and approved, this 9th day of May, 1985, and the conditions of Minnesota Statutes, Section 505.03, Subdivision 2, have been fulfilled.

David D. Claypool
David D. Claypool
Acting Ramsey County Surveyor

Registrar of Titles, County of Ramsey, State of Minnesota

I hereby certify that this plat of WLASCHIN ADDITION was filed in this office this 9th day of May, 1985, at 12:40 o'clock P. M. and was filed in Book 35 of Plats, Page 2, as Document No. 778 295.

Eugene H. Gibbons, Registrar of Titles By _____ Deputy



0 30 60 90
SCALE IN FEET

SCALE: 1 INCH = 30 FEET

o Denotes 1/2 inch by 14 inch iron monument set.
Marked with Reg. No. 8625 unless otherwise shown.

The north line of Atwater Street is assumed to have a bearing of East.

LOCATED IN
NE. 1/4 OF SW. 1/4 SEC. 25, TWP. 29, RGE. 23

**DELMAR H. SCHWANZ
LAND SURVEYORS INC.**