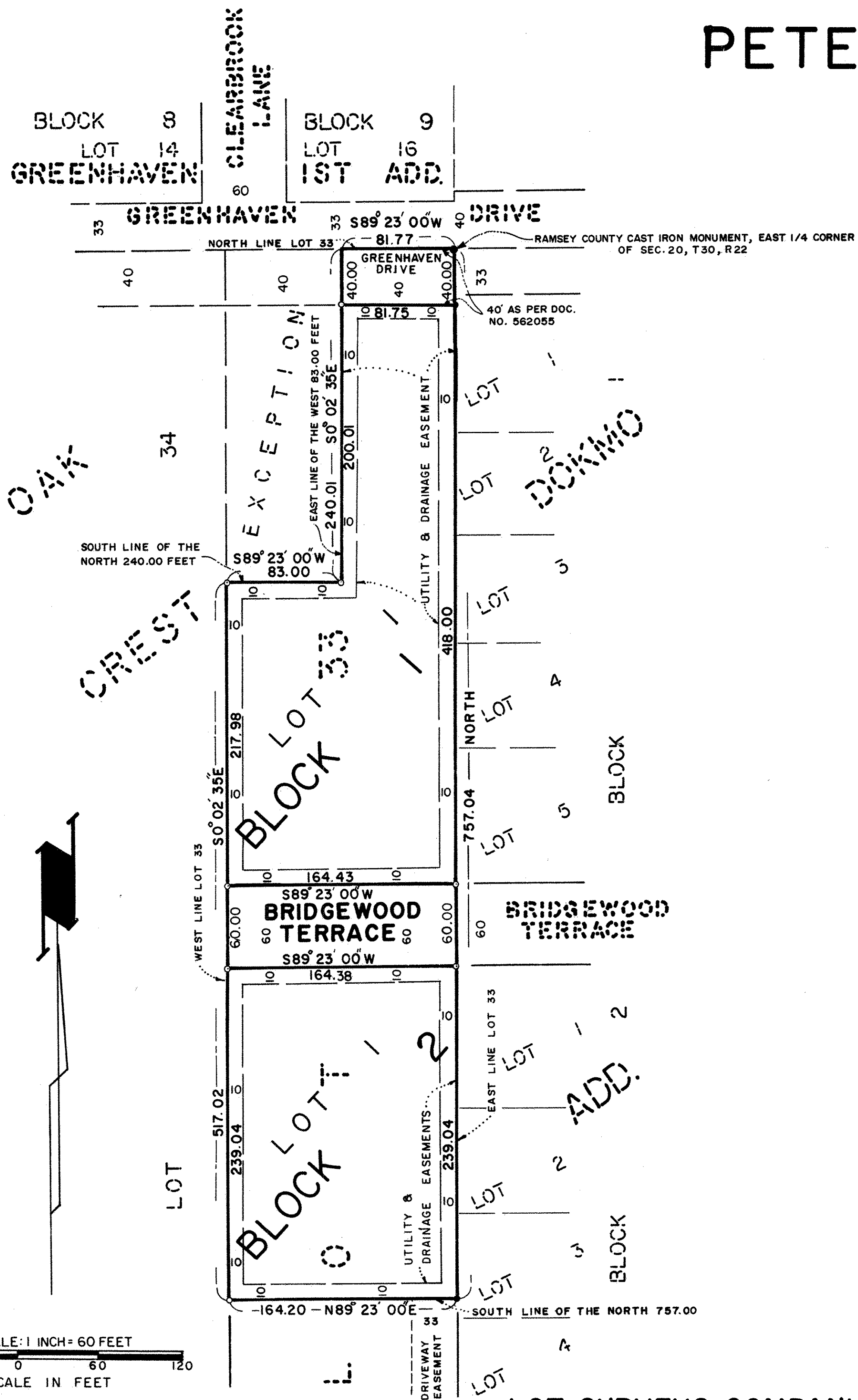


PETERSON'S OAK CREST



Know All Persons By These Presents that Donald Arthur Peterson, single and Shirley B. Peterson, single, owners and First Federal Savings and Loan Association of Minneapolis, a United States corporation, mortgagee of the following described property situated in the City of Vadnais Heights Ramsey County, Minnesota:

The North seven hundred fifty-seven (N. 757) feet of Lot thirty-three (33), Oak Crest, Ramsey Co., Minn., except the North 240.00 feet of the West 83.00 feet thereof, according to the plat thereof filed of record in the office of the Registrar of Titles within and for said County.

Have caused the same to be surveyed, platted and known as PETERSON'S OAK CREST and do hereby dedicate to the public for public use forever the Drive, Terrace and utility and drainage easements as shown on the plat. In witness whereof said Donald Arthur Peterson, single, and Shirley B. Peterson, single, have hereunto set their hands this 30th day of NOVEMBER, 1984. In witness whereof said First Federal Savings and Loan Association of Minneapolis, a United States corporation, has caused these presents to be signed by its proper officers and its corporate seal to be hereunto affixed this 3rd day of DECEMBER, 1984.

Signed:

First Federal Savings and Loan Association of Minneapolis

Donald Arthur Peterson
Donald Arthur Peterson

Kevin M. Nelson its Vice Pres. & Sec.

Shirley B. Peterson
Shirley B. Peterson

E. E. MacKacal its Ass't Vice Pres.

State of Minnesota
County of Hennepin The foregoing instrument was acknowledged before me this 30th day of November, 1984, by Donald Arthur Peterson, single, and by Shirley B. Peterson, single.



Lucile M. Shaw
Notary Public, Hennepin County, Minnesota
My Commission Expires Jan. 3, 1987

State of Minnesota
County of Hennepin The foregoing instrument was acknowledged before me this 3rd day of DECEMBER, 1984, by DARR V. NELSON, VICE PRES. & SEC. and by E. E. MACKACAL, ASS'T. VICE PRES. of First Federal Savings and Loan Association of Minneapolis, a United States corporation, on behalf of the corporation.

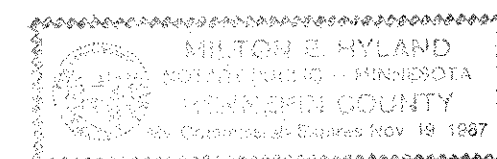


Jayne E. Bergmann
Notary Public, Hennepin County, Minnesota
My Commission Expires May 8, 1991

I, Raymond A. Prasch, hereby certify that I have surveyed and platted the property described in the dedication of this plat as PETERSON'S OAK CREST; that this plat is a correct representation of said survey; that all distances are correctly shown on the plat; that all monuments have been correctly placed in the ground as shown; that the outside boundary lines are correctly designated on the plat; and there are no wet lands, easements or public highways other than as shown thereon.

Raymond A. Prasch
Raymond A. Prasch, Land Surveyor
Minnesota Registration No. 6743

State of Minnesota
County of Hennepin The Surveyors Certificate was subscribed and sworn to before me, a Notary Public, this 27th day of NOVEMBER, 1984



Milton E. Hyland
Milton E. Hyland, Notary Public, Hennepin County, Minnesota
My Commission Expires November 19, 1987

Approved and accepted by the City Council of the City of Vadnais Heights, Minnesota, this 4th day of December, 1984.

Robert J. Hoberauer
Mayor

Gerald J. Urban
Clerk

Taxes for the year 1984 on land described herein Paid, no delinquent taxes and transfer entered, this 13 day of December, 1984.

Zou McKenna Director
Department of Property Taxation

By Sue Barkwell Deputy

Pursuant to Chapter 7, Minnesota Laws of 1976, this plat has been reviewed and approved, this 14th day of December, 1984 and the conditions of Minnesota Statutes, Section 505.03, Subdivision 2, have been fulfilled.

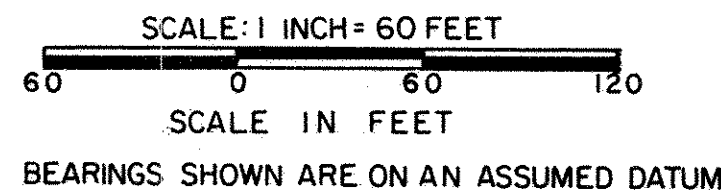
David D. Claypool
David D. Claypool
Acting Ramsey County Surveyor

Registrar of Titles, County of Ramsey, State of Minnesota

I hereby certify that this plat of PETERSON'S OAK CREST was filed in this office this 14th day of DECEMBER, 1984, at 11:50 o'clock A.M. and was filed in Book 34 of Plats, Page 40, as document No. 770080.

Eugene H. Gibbons, Registrar of Titles

By _____ Deputy



- DENOTES IRON MONUMENT SET
- DENOTES IRON MONUMENT FOUND

LOT SURVEYS COMPANY, INC.
LAND SURVEYORS