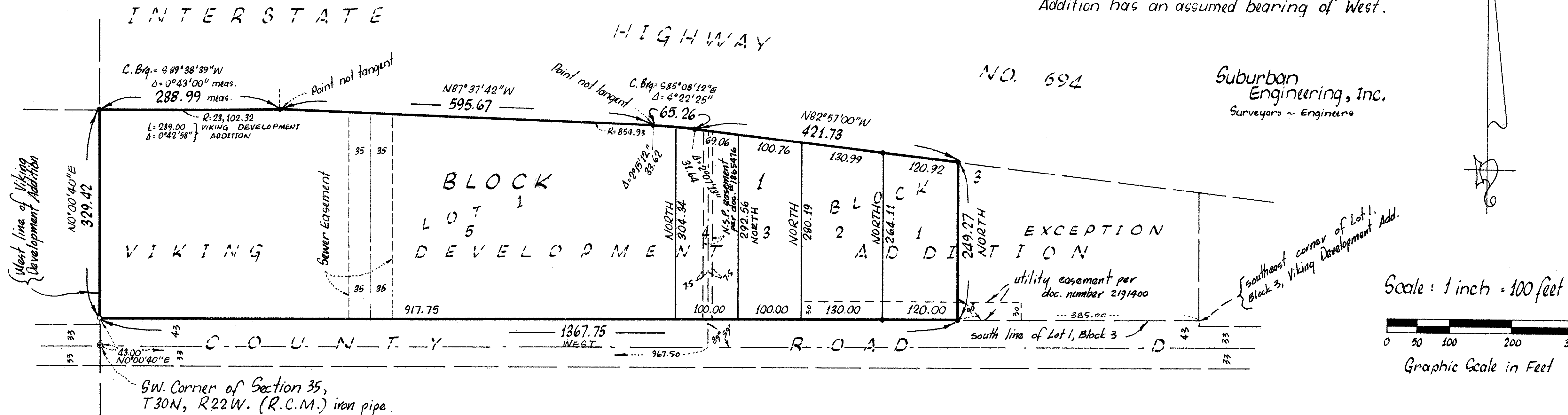


# TOUSLEY COMMERCIAL PARK

o denotes iron monument set  
 • denotes iron monument found.  
 The South line of Lot 1, Block 3, Viking Development Addition has an assumed bearing of West.



Scale: 1 inch = 100 feet  
 0 50 100 200 300  
 Graphic Scale in Feet

Know All Persons By These Presents that Tousley Development Corporation, a Minnesota corporation, owner and First State Bank of White Bear Lake, a Minnesota corporation, mortgagee of the following described property situated in the City of Maplewood, Ramsey County, Minnesota:

Lot 1, Block 3, Viking Development Addition, except that part lying easterly of the following described line: Commencing at the southeasterly corner of said Lot 1; thence westerly, along the south line of said lot 1, a distance of 385.00 feet to the point of beginning of the line to be described; thence northerly, at a right angle, a distance of 249.28 feet to the northerly line of said lot 1 and there terminating.

Have caused the same to be surveyed, platted, and known as TOUSLEY COMMERCIAL PARK and do hereby dedicate to the public for public use forever the drainage and utility easements as shown on the plat.

Tousley Development Corporation, a Minnesota corporation, has caused these presents to be signed by its proper officers this 17<sup>th</sup> day of August, 1984 and First State Bank of White Bear Lake, a Minnesota corporation, has caused these presents to be signed by its proper officers this 17<sup>th</sup> day of August, 1984.

Signed:

Tousley Development Corporation  
C. Hamilton Luther  
 C. Hamilton Luther, President

First State Bank of White Bear Lake  
 By [Signature] its Vice President Lelik A. Tatarski its Asst. Cashier

STATE OF MINNESOTA  
 COUNTY OF Ramsey

The foregoing instrument was acknowledged before me this 17<sup>th</sup> day of August, 1984 by C. Hamilton Luther, President of Tousley Development Corporation, a Minnesota corporation, on behalf of the corporation.

DEBRA A SHEAREN  
 NOTARY PUBLIC - MINNESOTA  
 WASHINGTON COUNTY  
 My Commission Expires May 25 1991

Debra A. Shearen  
 Notary Public Washington County, Minnesota  
 My Commission Expires May 25, 1991

STATE OF MINNESOTA  
 COUNTY OF Ramsey

The foregoing instrument was acknowledged before me this 17<sup>th</sup> day of August, 1984 by Ken F. Hengstenberg Vice President and by Lelik A. Tatarski, Asst. Cashier of First State Bank of White Bear Lake, a Minnesota corporation, on behalf of the corporation.

DEBRA A SHEAREN  
 NOTARY PUBLIC - MINNESOTA  
 WASHINGTON COUNTY  
 My Commission Expires May 25 1991

Debra A. Shearen  
 Notary Public Washington County, Minnesota  
 My Commission Expires May 25, 1991

I, Robert B. Sikich, hereby certify that I have surveyed and platted the property described in the dedication of this plat as TOUSLEY COMMERCIAL PARK that this plat is a correct representation of said survey; that all distances are correctly shown on the plat; that all monuments have been correctly placed in the ground as shown; that the outside boundary lines are correctly designated on the plat; and there are no wet lands, easements or public highways other than as shown thereon.

Robert B. Sikich  
 Robert B. Sikich, Land Surveyor  
 Minnesota Registration No. 14891

STATE OF MINNESOTA)  
 COUNTY OF ANOKA )

The Surveyor's Certificate was subscribed and sworn to before me, a Notary Public, this 17<sup>th</sup> day of August, 19 84.

MADELINE JEDLICKI  
 NOTARY PUBLIC - MINN. ST.  
 ANOKA COUNTY  
 My Commission Expires Dec. 15, 1990

Madeline Jedlicki  
 Notary Public, Anoka County, Minnesota  
 My Commission Expires 12-15-90

Approved and accepted by the City Council of the City of Maplewood, Minnesota, this 17<sup>th</sup> day of August, 19 84.

John Shearon Mayor  
Louise B. Russell Clerk

Taxes for the year 1984 on land described herein paid, no delinquent taxes and transfer entered, this 17 day of August, 19 84.

Don McKenna Director By D. McDanough Deputy  
 Department of Property Taxation

Pursuant to Chapter 7, Minnesota Laws of 1976, this plat has been reviewed and approved this 24<sup>th</sup> day of August, 19 84 and the conditions of Minnesota Statutes, Section 505.03, Subdivision 2, have been fulfilled.

David D. Claypool  
 David D. Claypool  
 Acting Ramsey County Surveyor

County Recorder, County of Ramsey, State of Minnesota.

I hereby certify that this plat of TOUSLEY COMMERCIAL PARK was filed in this office this 24<sup>th</sup> day of AUGUST, 19 84, at 1:20 o'clock P.M. and was filed in Book 97 of Plats, Page 4, as Document Number 2232984.

Eugene H. Gibbons, County Recorder By \_\_\_\_\_ Deputy