

# LAKE RIDGE PARK

Know All Persons By These Presents that Nu Way Builders, Inc, a Minnesota Corporation, owner of the following described property situated in the City of Maplewood, Ramsey County, Minnesota:

The north 126.80 feet of the south 280.00 feet of the east 580.00 feet of the North Half of the Southwest Quarter of Section 2, and the south 153.20 feet of that part of the North Half of the Southwest Quarter of Section 2, lying easterly of the center line of White Bear Avenue, all in Section 2, Township 29, Range 22, Ramsey County, Minnesota.

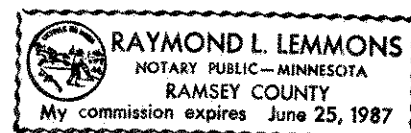
Has caused the same to be surveyed, platted and known as LAKE RIDGE PARK and do hereby dedicate to the public for public use forever the Avenue and utility and drainage easements as shown on the plat. Nu Way Builders, Inc, a Minnesota Corporation, has caused these presents to be signed by its President this 24<sup>th</sup> day of August, 1983.

Signed: Nu Way Builders, Inc.

Sidney Johnson its President

STATE OF MINNESOTA)  
COUNTY OF RAMSEY )

The foregoing instrument was acknowledged before me this 24<sup>th</sup> day of August, 1983, by Sidney Johnson, President of Nu Way Builders, Inc, a Minnesota Corporation, on behalf of the corporation.



Raymond L. Lemmons  
Notary Public, Ramsey County, Minnesota  
My Commission Expires \_\_\_\_\_

I, Jeffrey N. Caine, hereby certify that I have surveyed and platted the property described in the dedication of this plat as LAKE RIDGE PARK; that this plat is a correct representation of said survey; that all distances are correctly shown on the plat; that all monuments have been correctly placed in the ground as shown; that the outside boundary lines are correctly designated on the plat; and there are no wet lands, easements or public highways other than as shown thereon.

Jeffrey N. Caine  
Land Surveyor - Minnesota Registration No. 12251

STATE OF MINNESOTA)  
COUNTY OF ANOKA )

The Surveyor's Certificate was subscribed and sworn to before me, a Notary Public, this 18<sup>th</sup> day of August, 1983.

Nancy L. Caine  
Notary Public, Anoka County, Minnesota  
My Commission Expires July 23, 1986



Approved and accepted by the City Council of the City of Maplewood, Minnesota, this 28<sup>th</sup> day of February, 1983.

John Sweaver  
Mayor

Lucille L. Avelina  
Clerk

Taxes for the year 1983 on the land described herein paid, no delinquent taxes and transfer entered, this 21<sup>st</sup> day of September, 1983.

Low McKenna, Director  
Department of Property Taxation

By R.J. Segl Deputy

Pursuant to Chapter 7, Minnesota Laws of 1976, this plat has been reviewed and approved, this 21<sup>st</sup> day of September, 1983, and the conditions of Minnesota Statutes, Section 505.03, Subdivision 2, have been fulfilled.

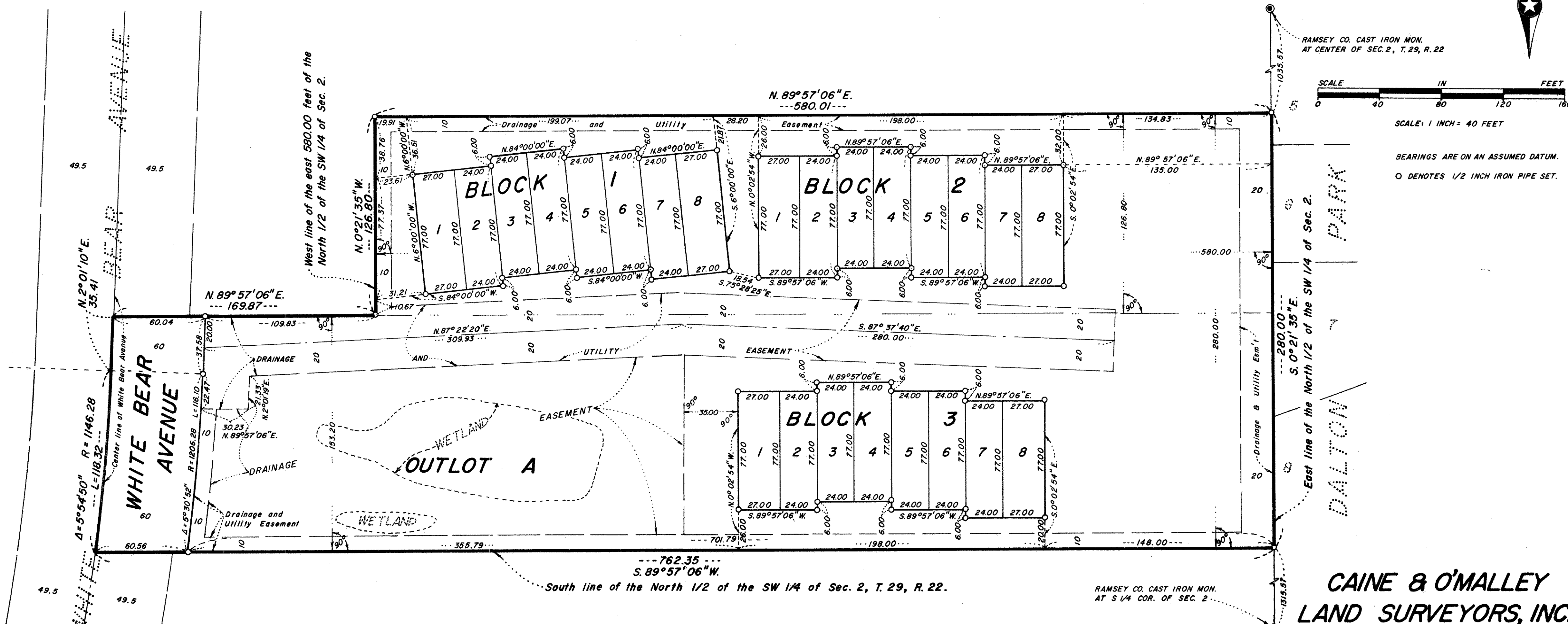
F. R. Kvidera  
F. R. Kvidera, Acting Ramsey County Surveyor

County Recorder, County of Ramsey, State of Minnesota

I hereby certify that this plat of LAKE RIDGE PARK was filed in this office this 22<sup>nd</sup> day of SEPTEMBER, 1983, at 8:53 o'clock A. M. and was filed in Book 96 of Plats, Page 6, as Document No. 2193801.

Eugene H. Gibbons, County Recorder

By \_\_\_\_\_, Deputy



RAMSEY CO. CAST IRON MON.  
AT CENTER OF SEC. 2, T. 29, R. 22

SCALE: 1 INCH = 40 FEET

BEARINGS ARE ON AN ASSUMED DATUM.  
O DENOTES 1/2 INCH IRON PIPE SET.

RAMSEY CO. CAST IRON MON.  
AT S 1/4 COR. OF SEC. 2

**CAINE & O'MALLEY  
LAND SURVEYORS, INC.**