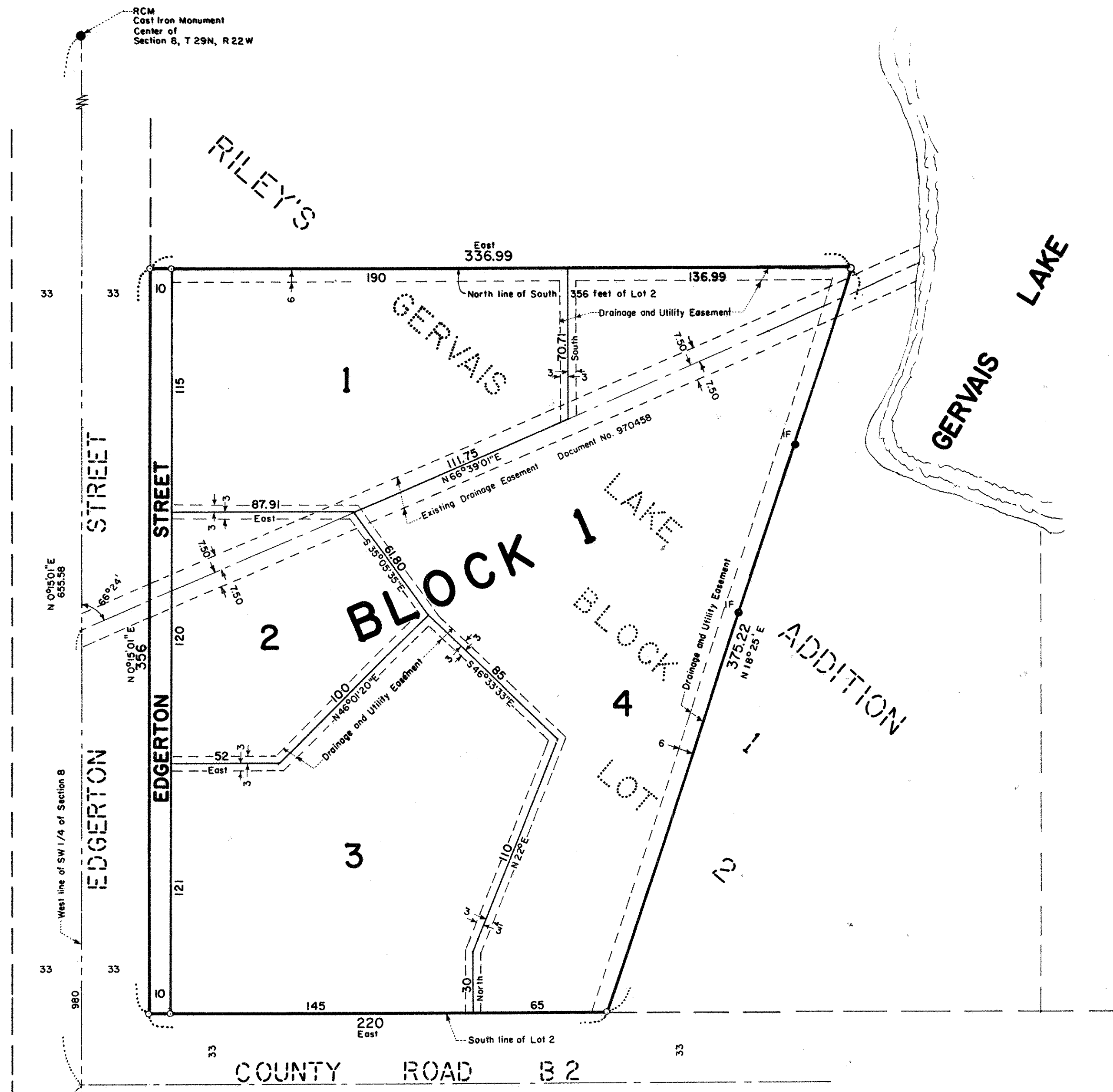


RILEY'S GERVAIS LAKE 2ND ADDITION



Know All Persons By These Presents that Ray Kroiss Homes, Inc., a Minnesota Corporation, owner of the following described property situated in the City of Little Canada, Ramsey County, Minnesota:

All that part of the South 356 feet of Lot 2, Block 1, Riley's Gervais Lake Addition lying Westerly of a line described as: Beginning at a point on the South line of said Lot 2 distant 220 feet East of the Southwest corner of said Lot 2 and running North 18°25' East to Gervais Lake and there terminating.

Has caused the same to be surveyed, platted and known as RILEY'S GERVAIS LAKE 2ND ADDITION and does hereby dedicate to the public for public use forever the existing drainage easement and street as shown on the plat.

Ray Kroiss Homes, Inc., a Minnesota Corporation, has caused these presents to be signed by its president this 18th day of April, 1983.

Signed: Ray Kroiss Homes, Inc., a Minnesota Corporation

Raymond J. Kroiss its President
Raymond J. Kroiss

STATE OF MINNESOTA
COUNTY OF RAMSEY)

The foregoing instrument was acknowledged before me this 18th day of April, 1983, by Raymond J. Kroiss, President of Ray Kroiss Homes, Inc., a Minnesota Corporation, on behalf of the corporation.

Alan John Irwin
Notary Public, Anoka County, Minnesota
My Commission Expires May 23, 1986



I, Donald W. Schmidt, hereby certify that I have surveyed and platted the property described in the dedication of this plat as RILEY'S GERVAIS LAKE 2ND ADDITION; that this plat is a correct representation of said survey; that all distances are correctly shown on the plat; that all monuments have been correctly placed in the ground as shown; that the outside boundary lines are correctly designated on the plat; and there are no wet lands, easements, or public highways other than as shown thereon.

Donald W. Schmidt
Donald W. Schmidt, Land Surveyor
Minnesota Registration No. 10459

STATE OF MINNESOTA
COUNTY OF RAMSEY)

The Surveyor's Certificate was subscribed and sworn to before me, a Notary Public, this 14th day of April, 1983.

Alan John Irwin
Alan John Irwin
Notary Public, Anoka County, Minnesota
My Commission Expires May 23, 1986



Approved and accepted by the City Council of the City of Little Canada, Minnesota, this 17th day of July, 1983.

Raymond J. Kroiss Mayor
Joseph Caldwell Clerk

Taxes for the year 1983 on land described herein paid, no delinquent taxes and transfer entered, this 20th day of July, 1983.

Joe McKenna Director By *D. Keane* Deputy
Department of Property Taxation

Pursuant to Chapter 7, Minnesota Laws of 1976, this plat has been reviewed and approved, this 21st day of July, 1983 and the conditions of Minnesota Statutes, Section 505.03, Subdivision 2, have been fulfilled.

F. R. Kvidera
F. R. Kvidera
Acting Ramsey County Surveyor

County Recorder, County of Ramsey, State of Minnesota

I hereby certify that this plat of RILEY'S GERVAIS LAKE 2ND ADDITION was filed in this office this 21st day of July, 1983, at 12:10 o'clock P.M. and was filed in Book 96 of Plats, Page 1 as Document No. 2186015.

Eugene H. Gibbons, County Recorder By _____ Deputy

CITY OF LITTLE CANADA
RAMSEY COUNTY, MINNESOTA

○ Denotes Iron Pipe Monument set and marked by Reg. No. 10459.
IP* Denotes Iron Monument found in place.
All distances are to hundredths of a foot; thus, 145 denotes 145.00 feet.

West line of SE 1/4 of Section 8, T 29N, R 22W, is assumed as bearing N0°15'01"E.

GEORGI-SCHMIDT & ASSOC. INC.
Land Surveyors
3092 N. Lexington Ave. 483-4408
ROSEVILLE, MINNESOTA 55113

SCALE: 1 inch = 40 feet

