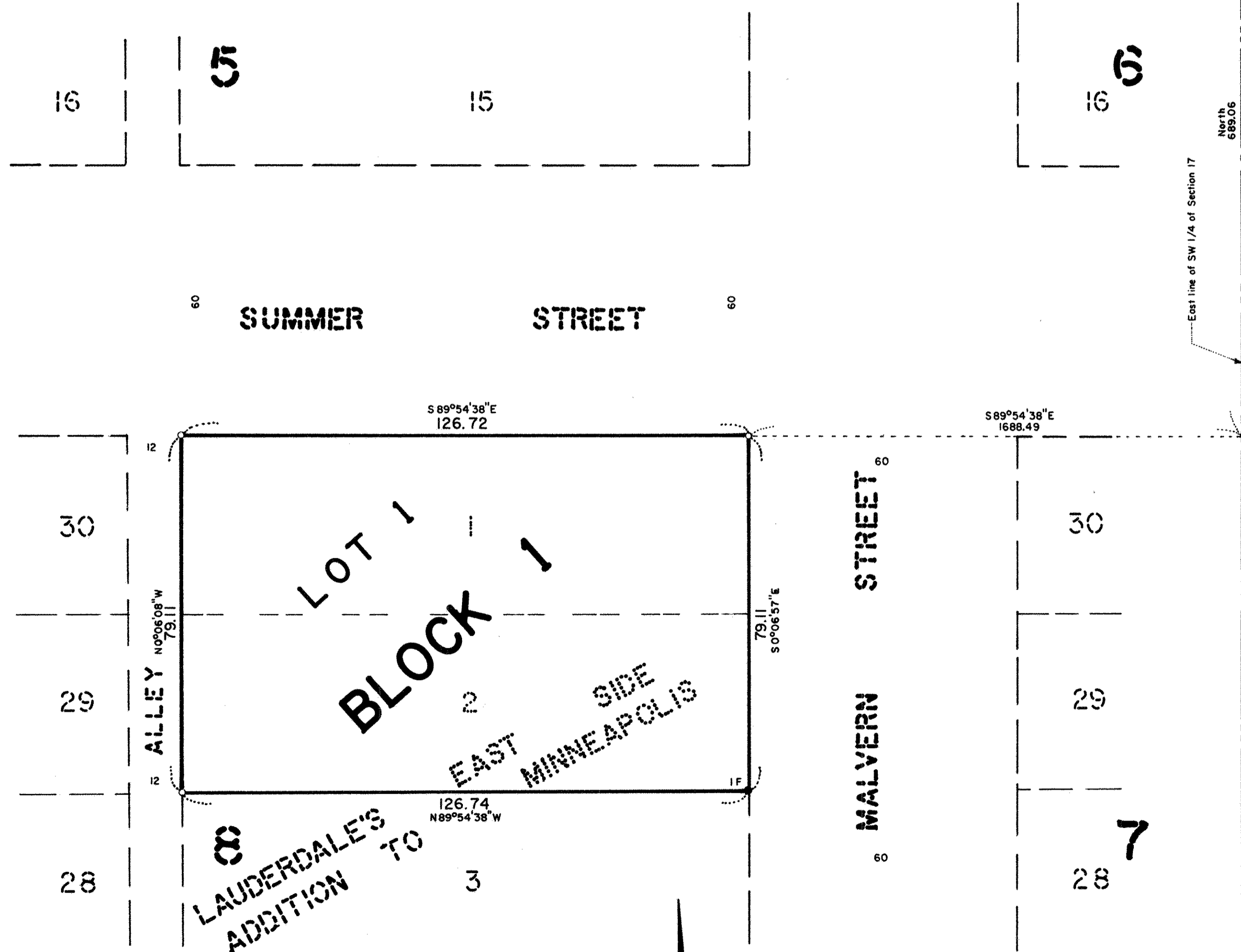


DYRUD'S ADDITION TO LAUDERDALE

CITY OF LAUDERDALE
RAMSEY COUNTY, MINNESOTA



RCM
Cast Iron Monument
Center of
Section 17, T 29N, R 23W

North
689.06
East line of SW 1/4 of Section 17

RCM
Cast Iron Monument (Broken)
South Quarter Corner of
Section 17, T 29N, R 23W

○ Denotes Iron Pipe Monument set.
● Denotes Iron Monument found in place.
All distances are to hundredths of a foot;
thus, 60 denotes 60.00 feet.
East line of SW 1/4 of Section 17, T 29N,
R 23W, is assumed as bearing North.



SCALE: 1 inch = 20 feet

GEORGI-SCHMIDT & ASSOC. INC.
Land Surveyors
3092 N. Lexington Ave. 483-4408
ROSEVILLE, MINNESOTA 55113

Know All Persons By These Presents that Keith P. Dyrud and Grace B. Dyrud, husband and wife, owners of the following described property situated in the City of Lauderdale, Ramsey County, Minnesota:

Lots 1 and 2, Block 8, Lauderdale's East Side Addition to Minneapolis.

Have caused the same to be surveyed, platted and known as DYRUD'S ADDITION TO LAUDERDALE.

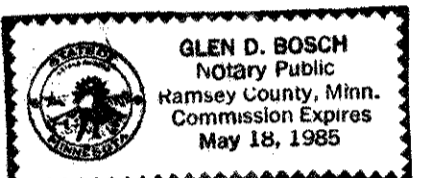
Have hereunto set our hands this 22nd day of June, 1983.

Signed: *Keith P. Dyrud* Keith P. Dyrud *Grace B. Dyrud* Grace B. Dyrud

STATE OF MINNESOTA)
COUNTY OF RAMSEY)

The foregoing instrument was acknowledged before me this 27th day of June, 1983, by Keith P. Dyrud and by Grace B. Dyrud, husband and wife.

Glen D. Bosch
Notary Public, Ramsey County, Minnesota
My Commission Expires May 18, 1985



I, Donald W. Schmidt, hereby certify that I have surveyed and platted the property described in the dedication of this plat as DYRUD'S ADDITION TO LAUDERDALE; that this plat is a correct representation of said survey; that all distances are correctly shown on the plat; that all monuments have been correctly placed in the ground as shown; that the outside boundary lines are correctly designated on the plat; and there are no wet lands, easements or public highways other than as shown thereon.

Donald W. Schmidt
Donald W. Schmidt, Land Surveyor
Minnesota Registration No. 10459

STATE OF MINNESOTA)
COUNTY OF RAMSEY)

The Surveyor's Certificate was subscribed and sworn to before me, a Notary Public, this 24th day of June, 1983.

Alan John Irwin
Alan John Irwin
Notary Public, Anoka County, Minnesota
My Commission Expires May 23, 1986



Approved and accepted by the City Council of the City of Lauderdale, Minnesota, this 27th day of June, 1983.

David A. Nelson Mayor *Jessie M. Peterson* Clerk

No delinquent taxes and transfer entered, this 28th day of June, 1983.

Low McBurna Director By *R. J. Dejl* Deputy
Department of Property Taxation

Pursuant to Chapter 7, Minnesota Laws of 1976, this plat has been reviewed and approved, this 28th day of June, 1983 and the conditions of Minnesota Statutes, Section 505.03, Subdivision 2, have been fulfilled.

F. R. Kvidera
F. R. Kvidera
Acting Ramsey County Surveyor

County Recorder, County of Ramsey, State of Minnesota

I hereby certify that this plat of DYRUD'S ADDITION TO LAUDERDALE was filed in this office this 30th day of June, 1983, at 9:26 o'clock A.M. and was filed in Book 95 of Plats, Page 48, as Document No. 2183560.

Eugene H. Gibbons, County Recorder By _____ Deputy