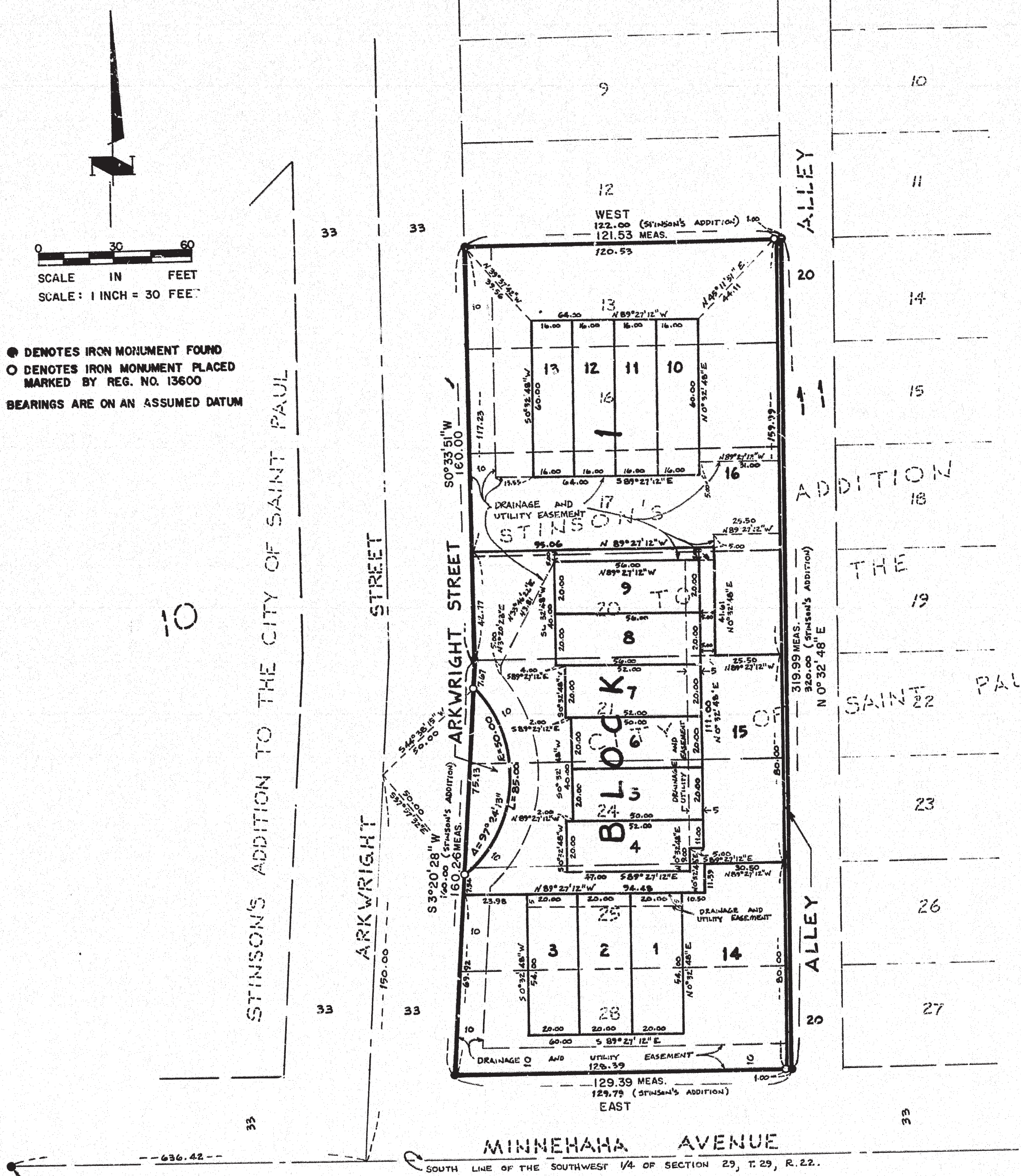


RIVOLI HEIGHTS

This plat document is an UNOFFICIAL copy of a Subdivision Plat or Registered Land Survey and is made available for information purposes only.

To obtain an official copy please contact the Ramsey County Recorder's Office.



● DENOTES IRON MONUMENT FOUND
○ DENOTES IRON MONUMENT PLACED MARKED BY REG. NO. 13600
BEARINGS ARE ON AN ASSUMED DATUM

IRON CONCRETE MONUMENT AT SW CORNER OF THE SW 1/4 OF SECTION 29, T. 19, R. 22.

PROBE ENGINEERING COMPANY, INC.

Know All Persons By These Presents that Tilsen Homes, Inc., a Minnesota corporation, owner of the following described property situated in the City of Saint Paul, Ramsey County, Minnesota:

Lots 13, 16, 17, 20, 21, 24, 25, and 28, Block 11, Stinson's Addition to the City of Saint Paul in the State of Minnesota.

Has caused the same to be surveyed, platted and known as RIVOLI HEIGHTS and does hereby dedicate to the public for public use forever the street, alley and drainage and utility easements as shown on the plat.

Tilsen Homes, Inc., a Minnesota corporation, has caused these presents to be signed by its proper officers this 4th day of March, 19 83.

Signed: Tilsen Homes, Inc.

Max Leibman its Vice President/Treas.
James A. Tilsen its Vice President

STATE OF MINNESOTA
COUNTY OF Ramsey

The foregoing instrument was acknowledged before me this 4th day of March, 19 83, by James A. Tilsen Vice President, and by Max Leibman Vice President/Treas. of Tilsen Homes, Inc., a Minnesota corporation, on behalf of the corporation.

Scott Tilsen
Notary Public, Scott County, Minnesota
My Commission Expires Oct 27, 1983

I Donald L. Dethlefs, hereby certify that I have surveyed and platted the property described in the dedication of this plat as RIVOLI HEIGHTS; that this plat is a correct representation of said survey; that all distances are correctly shown on the plat; that all monuments have been correctly placed in ground as shown; that the outside boundary lines are correctly designated on the plat; and there are no wet lands, easements or public highways other than as shown thereon.

Donald L. Dethlefs
Land Surveyor, Minnesota Registration No. 13600

STATE OF MINNESOTA
COUNTY OF Scott

The Surveyor's Certificate was subscribed and sworn to before me, a Notary Public, this 3rd day of March, 19 83.

D. L. M. New
Notary Public, Scott County, Minnesota
My Commission Expires Oct 27, 1983

Approved and accepted by the City Council of the City of Saint Paul, Minnesota, this 29 day of MARCH, 19 83.

Albert O. Olson
Clerk

No delinquent taxes and transfer entered, this 29th day of March, 19 83.

By Law McKenna Director
Department of Property Taxation

By Danna Kaine Deputy

Pursuant to Chapter 7, Minnesota Laws of 1976, this plat has been reviewed and approved, this 15th day of April, 19 83 and the conditions of Minnesota Statutes, Section 505.03, Subdivision 2, have been fulfilled.

J. B. Fredera
P.R. Evidera
Acting Ramsey County Surveyor

Registrar of Titles, County of Ramsey, State of Minnesota

I hereby certify that this plat of RIVOLI HEIGHTS was filed in this office this one day of April, 19 83, at 3:50 o'clock P.M., and was filed in Book 33 of Plats, Page 38, as Document No. 74907.

Eugene H. Gibbons
Eugene H. Gibbons, Registrar of Titles

By _____ Deputy