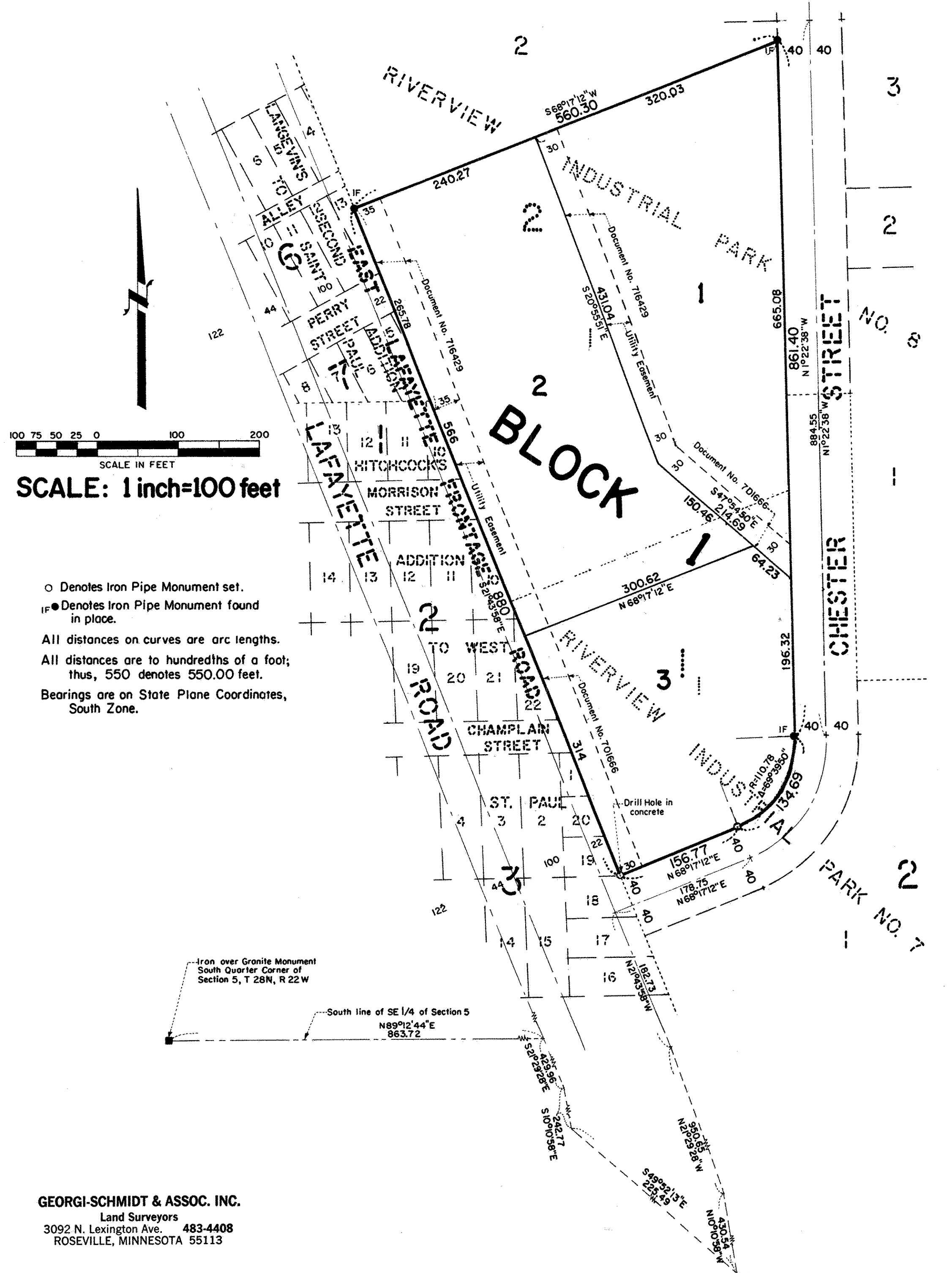


RIVERVIEW INDUSTRIAL PARK NO. 9

LOCATED IN THE SE 1/4, SECTION 5, T 28N, R 22W
CITY OF SAINT PAUL
RAMSEY COUNTY, MINNESOTA



SCALE IN FEET
100 75 50 25 0 100 200
SCALE: 1 inch=100 feet

○ Denotes Iron Pipe Monument set.
 IF ● Denotes Iron Pipe Monument found in place.
 All distances on curves are arc lengths.
 All distances are to hundredths of a foot; thus, 550 denotes 550.00 feet.
 Bearings are on State Plane Coordinates, South Zone.

GEORGI-SCHMIDT & ASSOC. INC.
 Land Surveyors
 3092 N. Lexington Ave. 483-4408
 ROSEVILLE, MINNESOTA 55113

Know All Persons By These Presents that Port Authority of the City of Saint Paul, a Minnesota corporation, owner of the following described property situated in the City of Saint Paul, Ramsey County, Minnesota:

Lot 1, Block 1, Riverview Industrial Park No. 7 and Lot 1, Block 2, Riverview Industrial Park No. 8.

Have caused the same to be surveyed, platted and known as RIVERVIEW INDUSTRIAL PARK NO. 9.

Port Authority of the City of Saint Paul, a Minnesota corporation, has caused these presents to be signed by its proper officers and its corporate seal to be hereunto affixed this 28th day of January, 1983.

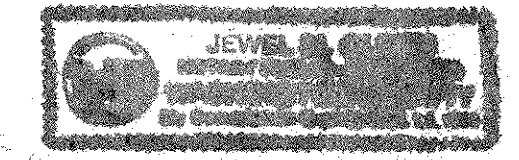
Signed: Port Authority of the City of Saint Paul.

[Signature] its President
[Signature] its Secretary

STATE OF MINNESOTA)
 COUNTY OF RAMSEY)

The foregoing instrument was acknowledged before me this 28th day of January, 1983, by George W. Winter, President and by Arthur N. Anderson, Secretary of Port Authority of the City of Saint Paul, a Minnesota corporation, on behalf of the corporation.

[Signature]
 Notary Public, WASH. County, Minnesota
 My Commission Expires _____



I, Donald W. Schmidt, hereby certify that I have surveyed and platted the property described in the dedication of this plat as RIVERVIEW INDUSTRIAL PARK NO. 9; that this plat is a correct representation of said survey; that all distances are correctly shown on the plat; that all monuments have been correctly placed in the ground as shown; that the outside boundary lines are correctly designated on the plat; and there are no wet lands, easements or public highways other than as shown thereon.

[Signature]
 Donald W. Schmidt, Land Surveyor
 Minnesota Registration No. 10459

STATE OF MINNESOTA)
 COUNTY OF RAMSEY)

The Surveyor's Certificate was subscribed and sworn to before me, a Notary Public, this 14th day of December, 1982.

[Signature]
 Alan John Irwin
 Notary Public, Anoka County, Minnesota
 My Commission Expires May 23, 1984



Approved and accepted by the City Council of the City of Saint Paul, Minnesota, this 26 day of Nov, 1982.

[Signature]
 Clerk

No delinquent taxes and transfer entered, this 4 day of February, 1983.

[Signature] Director By *[Signature]* Deputy
 Department of Property Taxation

Pursuant to Chapter 7, Minnesota Laws of 1976, this plat has been reviewed and approved, this 17th day of February, 1983 and the conditions of Minnesota Statutes, Section 505.03, Subdivision 2, have been fulfilled.

[Signature]
 F. R. Kvidera
 Acting Ramsey County Surveyor

Registrar of Titles, County of Ramsey, State of Minnesota
 I hereby certify that this plat of RIVERVIEW INDUSTRIAL PARK NO. 9 was filed in this office this 17th day of February, 1983, at 8:10 o'clock P.M. and was filed in Book 33 of Plats, Page 33, as Document No. 233090.

Eugene H. Gibbons, Registrar of Titles
 By _____ Deputy