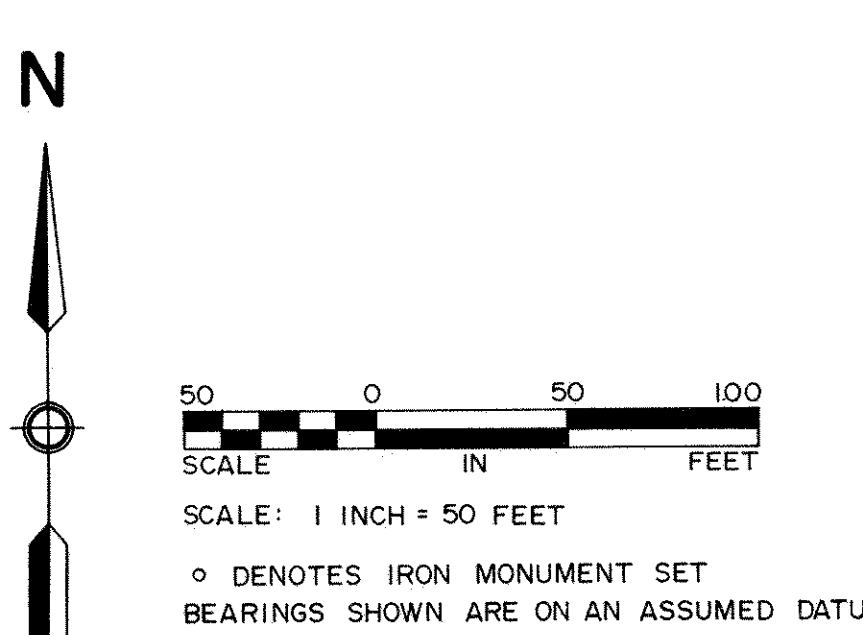
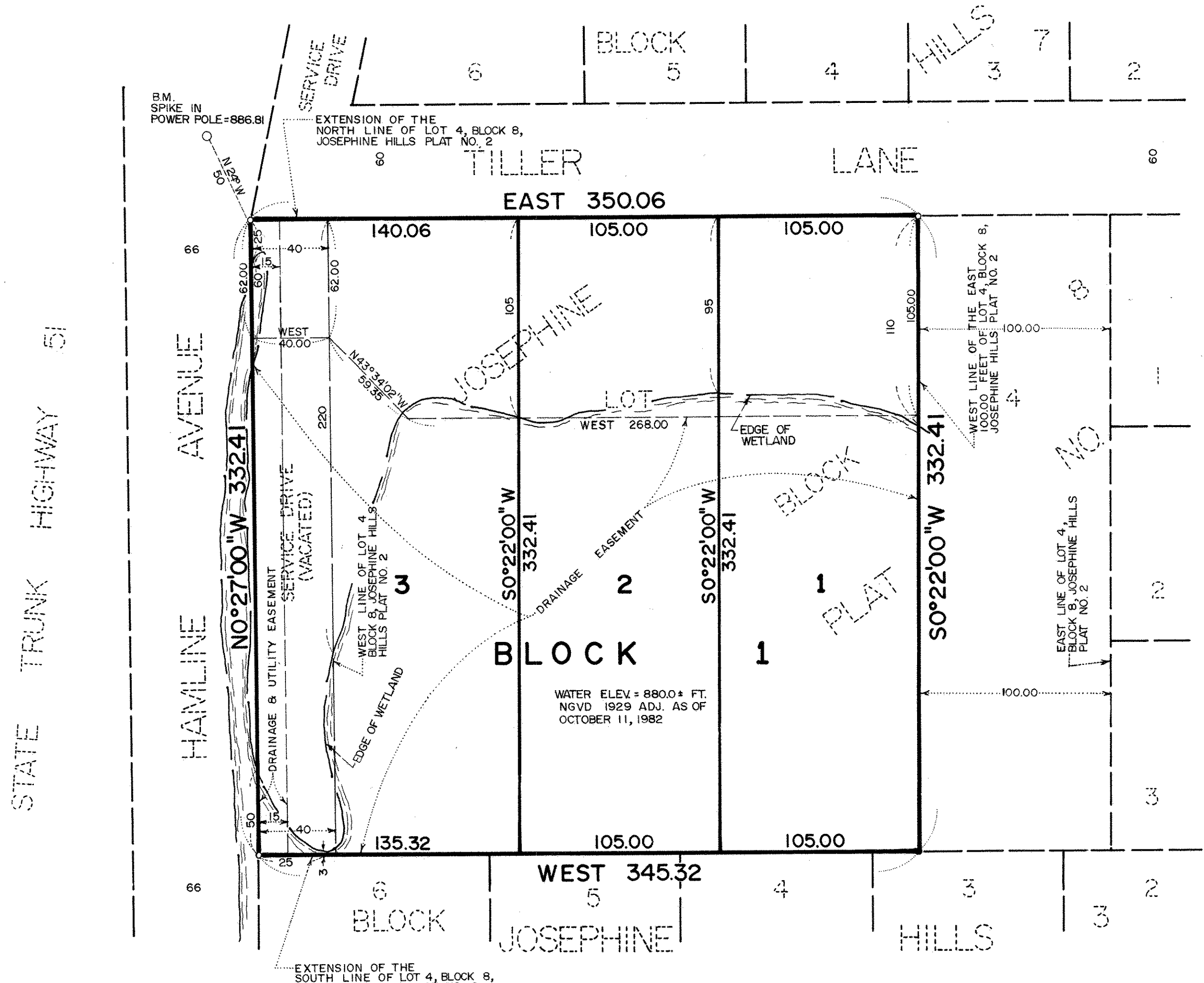


CHRISTIANSON HEIMBACH ADDITION

Located in NW 1/4 of SE 1/4, Sec. 34, Twp. 30, Rge 23



KNOW ALL PERSONS BY THESE PRESENTS that Christianson-Heimbach Properties, a Minnesota Partnership consisting of Ronald L. Christianson and Albert J. Heimbach, owner of the following described property situated in the City of Arden Hills, Ramsey County, Minnesota:

That part of Lot 4 lying West of the East 100 feet thereof, Block 8, Josephine Hills Plat No. 2, and that part of adjoining Service Drive, vacated, lying between the extensions across said road of the North and South lines of said Lot 4.

Has caused the same to be surveyed, platted and known as CHRISTIANSON HEIMBACH ADDITION and does hereby dedicate to the public for public use forever the drainage and utility easements as shown on the plat.

Christianson - Heimbach Properties, a partnership, has caused these presents to be signed by Ronald L. Christianson and Albert J. Heimbach, its partners, this 17th day of August, 1982.

SIGNED: Christianson-Heimbach Properties

Ronald L. Christianson
Ronald L. Christianson, Partner

Albert J. Heimbach
Albert J. Heimbach, Partner

STATE OF MINNESOTA
COUNTY OF Ramsey

The foregoing instrument was acknowledged before me this 17th day of AUGUST, 1982 by Ronald L. Christianson, a partner and Albert J. Heimbach, a partner of Christianson - Heimbach Properties, a partnership, on behalf of said partnership.

Jan A. Rodde
Notary Public, Hennepin County, Minnesota
My Commission Expires September 28, 1984

I, Edward H. Sunde, hereby certify that I have surveyed and platted the property described in the dedication of this plat as CHRISTIANSON HEIMBACH ADDITION; that this plat is a correct representation of said survey; that all distances are correctly shown on the plat; that all monuments have been correctly placed in the ground as shown; that the outside boundary lines are correctly designated on the plat; that there are no wetlands, or public highways other than as shown thereon.

Edward H. Sunde
Edward H. Sunde, Land Surveyor
Minnesota Registration No. 8612

STATE OF MINNESOTA
COUNTY OF HENNEPIN

The Surveyor's Certificate was subscribed and sworn to before me, a Notary Public, this 6th day of July, 1982 by Edward H. Sunde, Land Surveyor.



John K. Barnes
Notary Public, HENNEPIN County, Minnesota
My Commission Expires SEPTEMBER 18, 1985

Approved and accepted by the City Council of the City of Arden Hills, Minnesota, this 26th day of August, 1982.

Robert Woodburn
Mayor

Charlotte McVish
Clerk

No delinquent taxes and transfer entered this 4th day of October, 1982.

Law McFenna Director
Department of Property Taxation

BY V. Zars Deputy

Pursuant to Chapter 7, Minnesota Laws of 1976, this plat has been reviewed and approved, this 28th day of October, 1982 and the conditions of Minnesota Statutes, Section 505.03, Subdivision 2, have been fulfilled.

F. R. Kvidera
F. R. Kvidera
Acting Ramsey County Surveyor

REGISTRAR OF TITLES, County of Ramsey, State of Minnesota

I hereby certify that this plat of CHRISTIANSON HEIMBACH ADDITION was filed in this office this 29th day of OCTOBER, 1982, at 2:40 o'clock P.M. and was filed in Book 33 of Plats, Page 26, as Document No. 728700.

BY _____ Deputy
Eugene H. Gibbons, Registrar of Titles