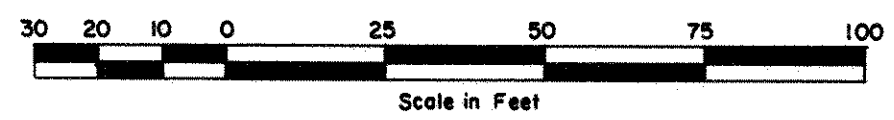


# WILLOW COURT NO. 2

o Denotes Iron Monument set  
 ● Denotes monument found in place  
 All distances are to hundredths of a foot; thus 40 denotes 40.00 feet.  
 West line of NW1/4 of Section 35, T30N, R22W is assumed as bearing North.

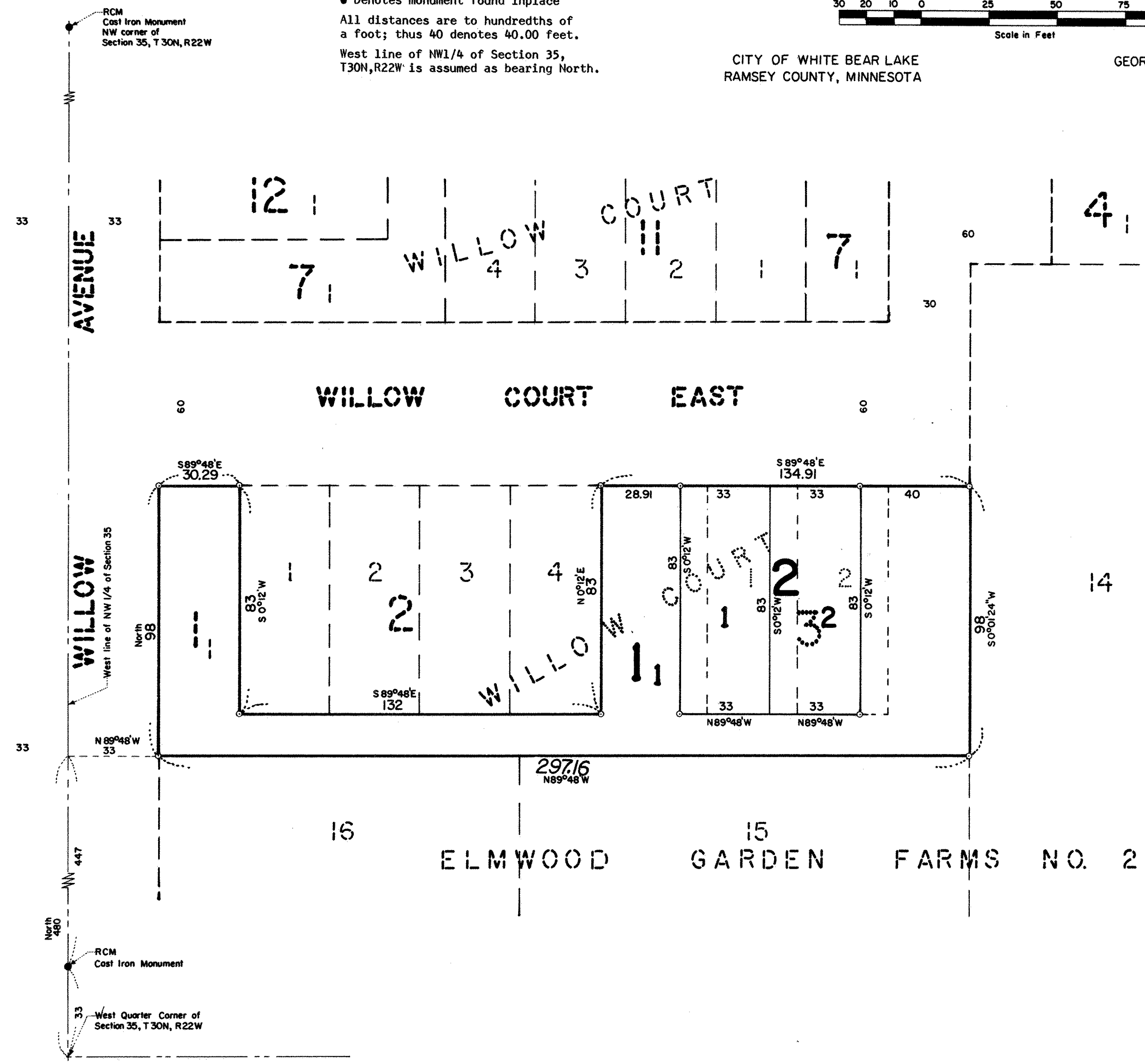
SCALE: 1 inch = 30 feet



CITY OF WHITE BEAR LAKE  
 RAMSEY COUNTY, MINNESOTA

GEORGI-SCHMIDT & ASSOCIATES, INC.  
 LAND SURVEYORS

INDEPENDENT SCHOOL DISTRICT NO. 624



Know All Persons By These Presents that:  
 Willow-Elm, a limited partnership, whose general partner is Willow Court Development, Inc., a Minnesota corporation and Willow Court Homeowner's Association, Inc., a Minnesota corporation, owners of the following described property situated in the City of White Bear Lake, Ramsey County, Minnesota:  
 Lot 1, Block 1 and Lots 1 and 2, Block 3, Willow Court.  
 Have caused the same to be surveyed, platted and known as WILLOW COURT NO. 2.  
 Willow-Elm, a limited partnership, whose general partner is Willow Court Development, Inc., a Minnesota corporation, has caused these presents to be signed by its proper officers this 14 day of July, 1981.  
 Signed: Willow Court Development, Inc., a Minnesota corporation as general partner of Willow-Elm, a limited partnership  
 Thomas J. Fitzpatrick, its President      George E. Rossez, its Secretary  
 Willow Court Homeowner's Association, Inc., a Minnesota corporation, has caused these presents to be signed by its proper officer this 14 day of July, 1981.  
 Signed: Willow Court Homeowner's Association, Inc., a Minnesota corporation  
 Thomas J. Fitzpatrick, its President

STATE OF MINNESOTA ) S S  
 COUNTY OF RAMSEY )  
 The foregoing instrument was acknowledged before me this 14 day of July, 1981, by Thomas J. Fitzpatrick, President and by George E. Rossez, Secretary of Willow Court Development, Inc., a Minnesota corporation, on behalf of the corporation as general partner of Willow-Elm, a limited partnership, on behalf of the partnership.

*KATHRYN ROSSEZ*  
 Notary Public, Ramsey County, Minnesota  
 My Commission Expires 12/30/82

STATE OF MINNESOTA ) S S  
 COUNTY OF RAMSEY )  
 The foregoing instrument was acknowledged before me this 14 day of July, 1981, by Thomas J. Fitzpatrick, President of Willow Court Homeowner's Association, Inc., a Minnesota corporation, on behalf of the corporation.

*KATHRYN ROSSEZ*  
 Notary Public, Ramsey County, Minnesota  
 My Commission Expires 12/30/82

I, Donald W. Schmidt, hereby certify that I have surveyed and platted the property described in the dedication of this plat as WILLOW COURT NO. 2; that this plat is a correct representation of said survey; that all distances are correctly shown on the plat; that all monuments have been correctly placed in the ground as shown; that the outside boundary lines are correctly designated on the plat; and there are no wet lands, easements, or public highways other than as shown thereon.

*Donald W. Schmidt*  
 Registered Land Surveyor  
 Minnesota Registration No. 10459

STATE OF MINNESOTA ) S S  
 COUNTY OF RAMSEY )  
 The Surveyor's certificate was subscribed and sworn to before me, a Notary Public, this 14 day of July, 1981.

*KATHRYN ROSSEZ*  
 Notary Public, Ramsey County, Minnesota  
 My Commission Expires 12/30/82

Approved and accepted by the City Council of the City of White Bear Lake, Minnesota, this 14th day of October, 1980.

*Braggman* Mayor      *Raymond R. Stibbenaler* Clerk

No delinquent taxes and transfer entered this 13th day of April, 1982.  
*Jan McKeena* Director      By *Donna M. Keena* Deputy  
 Department of Property Taxation

Pursuant to Chapter 7, Minnesota Laws of 1976, this plat has been approved this 15th day of April, 1982.  
*J. R. Kvidera*  
 Acting Ramsey County Surveyor

Registrar of Titles, County of Ramsey, State of Minnesota  
 I hereby certify that this plat of WILLOW COURT NO. 2 was filed in this office this 30th day of June, 1982 at 1:40 o'clock P.M. and was filed in Book 33 of Plats, Page 4, as Document No. 723831.

Eugene H. Gibbons, Registrar of Titles  
 By \_\_\_\_\_ Deputy