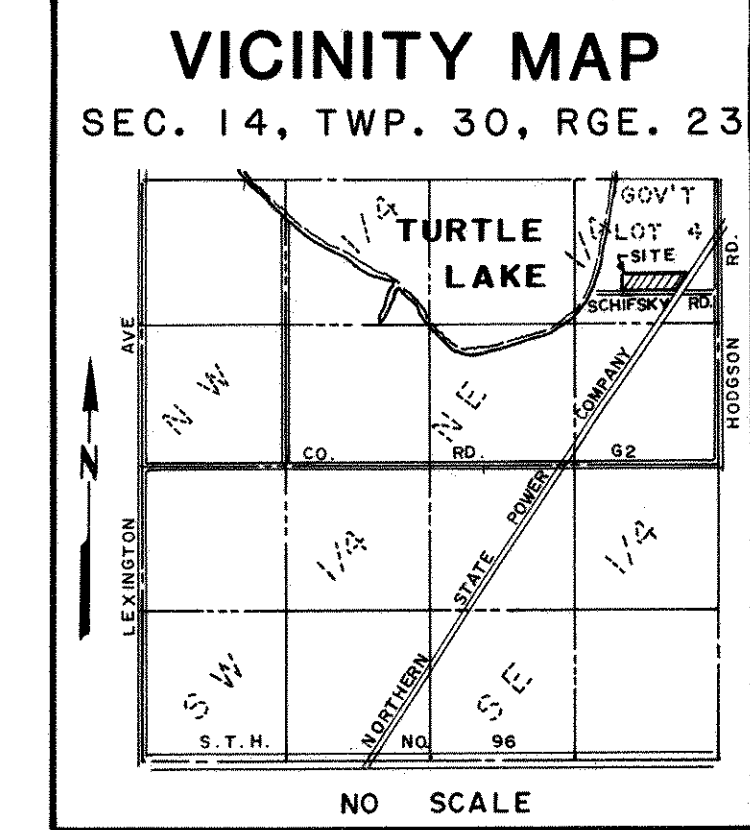
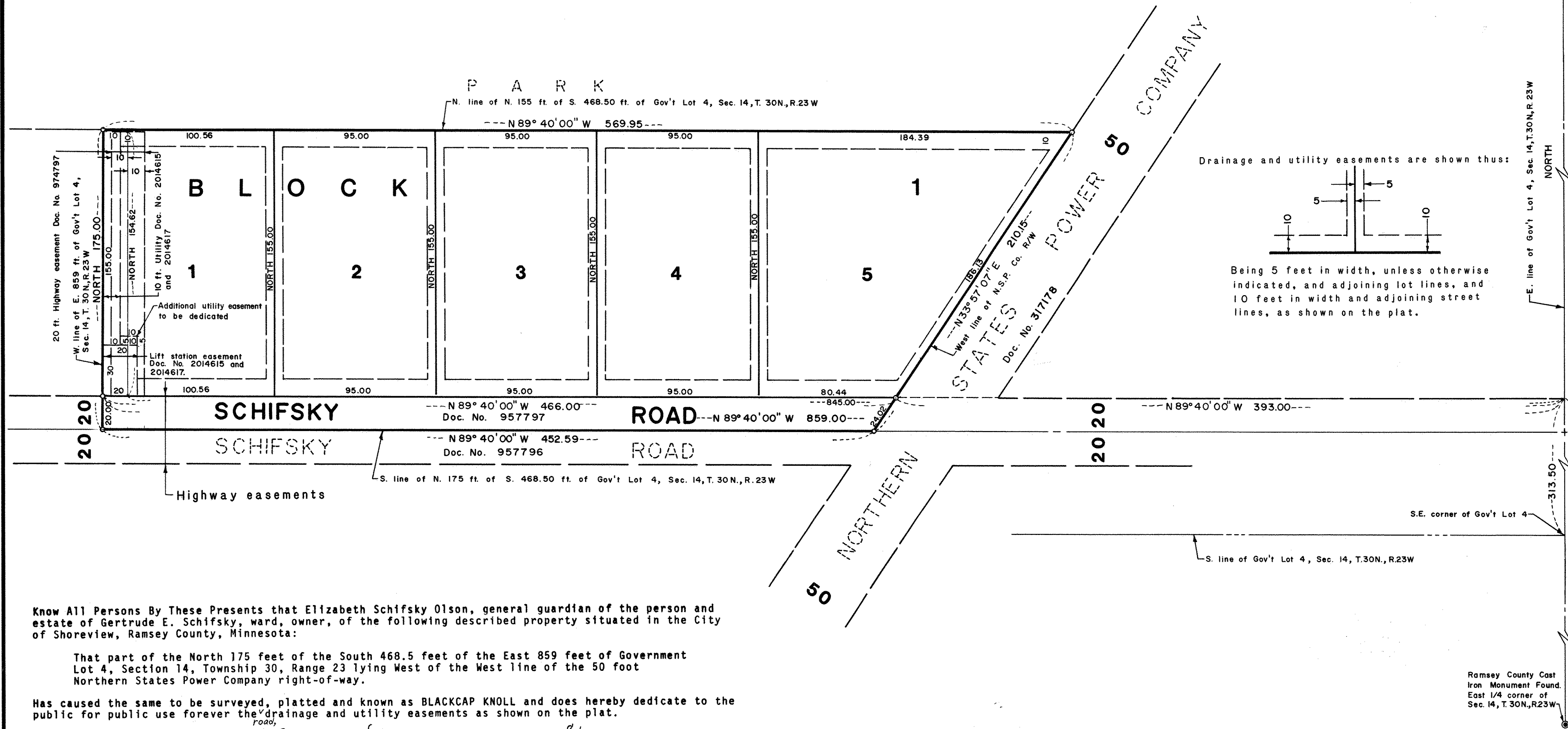


BLACKCAP KNOLL

Ramsey County East Iron Monument Found.
N.E. corner of Section 14, T.30N., R.23W



Know All Persons By These Presents that Elizabeth Schifsky Olson, general guardian of the person and estate of Gertrude E. Schifsky, ward, owner, of the following described property situated in the City of Shoreview, Ramsey County, Minnesota:

That part of the North 175 feet of the South 468.5 feet of the East 859 feet of Government Lot 4, Section 14, Township 30, Range 23 lying West of the West line of the 50 foot Northern States Power Company right-of-way.

Has caused the same to be surveyed, platted and known as BLACKCAP KNOLL and does hereby dedicate to the public for public use forever the drainage and utility easements as shown on the plat.

Have hereunto set my hand this 19 day of May, 1981.

Signed:

Elizabeth Schifsky Olson
Elizabeth Schifsky Olson, general guardian of the person and estate of Gertrude E. Schifsky, ward
STATE OF MINNESOTA } ss
COUNTY OF Washington }
Whitman

The foregoing instrument was acknowledged before me this 19th day of May, 1981, by Elizabeth Schifsky Olson, general guardian of the person and estate of Gertrude E. Schifsky, ward.

Deborah A. Koppertick
Notary Public, Washington County, Minnesota
My Commission Expires 11-12-83

I, LeRoy H. Winner, hereby certify that I have surveyed and platted the property described in the dedication of this plat as BLACKCAP KNOLL; that this plat is a correct representation of said survey, that all distances are correctly shown on the plat; that all monuments have been correctly placed in the ground as shown; that the outside boundary lines are correctly designated on the plat; and there are no wet lands, easements or public highways other than as shown thereon.

LeRoy H. Winner
LeRoy H. Winner, Registered Land Surveyor
Minnesota Registration No. 4987

STATE OF MINNESOTA } ss
COUNTY OF Ramsey }

The Surveyor's Certificate was subscribed and sworn to before me, a Notary Public, this 12 day of May, 1981.

Shirley J. Lundberg
SHIRLEY J. LUNDBERG
RAMSEY COUNTY
NOTARY PUBLIC-MINNESOTA
MY COMMISSION EXPIRES APR. 29, 1984

Shirley J. Lundberg
Notary Public, Ramsey County, Minnesota
My Commission Expires 4-29-1984

Approved and accepted by the City Council of the City of Shoreview, Minnesota, this 15th day of JUNE, 1981.

Richard A. Wedell
Mayor

Lang T. Dabson
Clerk

No delinquent taxes and transfer entered this 17th day of June, 1981.

Low McKeena Director By Edna Deputy
Department of Property Taxation

Pursuant to Chapter 7, Minnesota Laws of 1976, this plat has been reviewed and approved this 22nd day of JUNE, 1981, and the conditions of Minnesota Statutes, Section 505.03, Subdivision 2, have been fulfilled.

F. R. Kvidera
F. R. Kvidera
Acting Ramsey County Surveyor

County Recorder, County of Ramsey, State of Minnesota

I hereby certify that this plat of BLACKCAP KNOLL was filed in this office this 22 day of JUNE, 1981, at 2:40 o'clock P.M. and was filed in Book 26 of Plats, Page 26, as Document No. 2118752.

Eugene H. Gibbons County Recorder By Eugene H. Gibbons Deputy