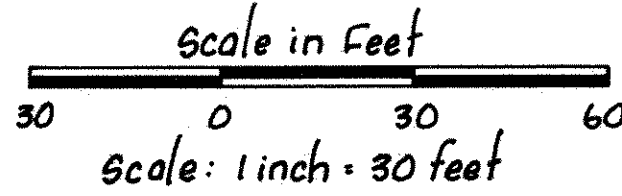


KELLER'S LAKE GROVE 4TH ADDITION

ALL BEARINGS ARE ON AN ASSUMED DATUM

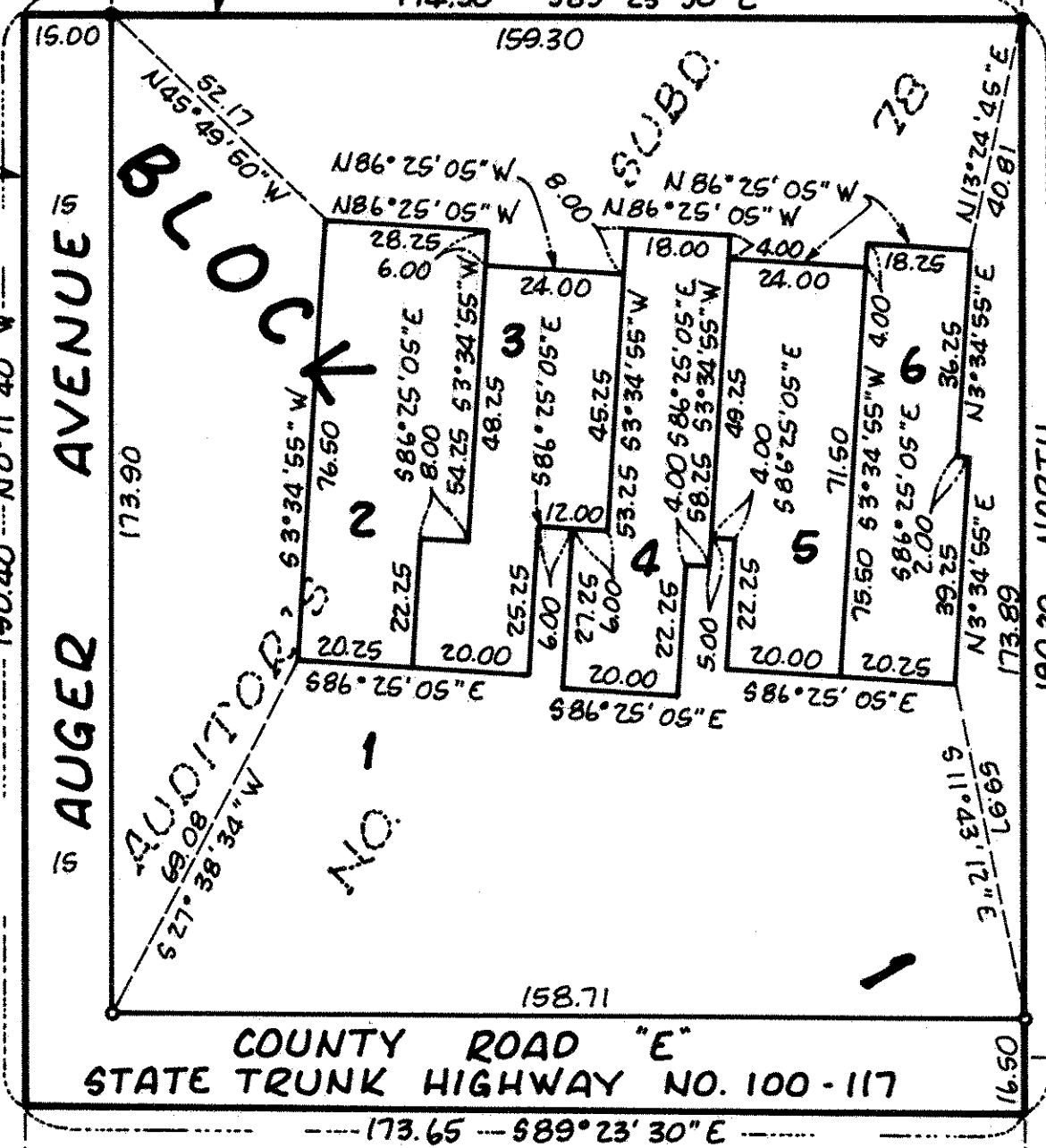
o-Denotes Iron Monument Set
•Denotes Iron Monument Found



Line parallel with and 736.5 feet East of the West line of Sec. 26, T30, R22, as located in Auditor's Subd. No. 78

KELLER'S LAKE GROVE 2ND ADDITION

South line of KELLER'S LAKE GROVE 2ND ADDITION 174.30 - 589° 23' 30" E



KELLER'S REARRANGEMENT OF LOT 4, AUDITOR'S SUBD. NO. 78

33 COUNTY ROAD "E" 33
South line of the Southwest 1/4 of the Southwest 1/4, Sec. 26, T30, R22.
STATE TRUNK HWY. NO. 100-117
Southwest corner of Section 26, (Cast Iron Monument - R.C.M.)

COUNTY RECORDER, COUNTY of RAMSEY, STATE of MINNESOTA
I hereby certify that this plat of KELLER'S LAKE GROVE 4TH ADDITION was filed in this office this 27th day of May, 1981, at 9:38 o'clock A.M. and was filed in Book 93 of Plats, Page 24 as Document No. 2116543.

EUGENE H. GIBBONS, County Recorder

By _____ Deputy

LOT SURVEYS COMPANY
LAND SURVEYORS

Know All Persons By These Presents that Wayne Herr Construction Co., a Minnesota corporation, owner and Washington Federal Savings and Loan Association of Stillwater, a United States corporation, mortgagee and North Star Mortgage, Inc., a Minnesota corporation, mortgagee, of the following described property situated in the City of White Bear Lake, Ramsey County, Minnesota:

That part of Lot 5, Auditor's Subdivision No. 78, Ramsey County, Minnesota, according to the plat thereof on file and of record in the office of the County Recorder in and for said County, lying South of the South line of KELLER'S LAKE GROVE 2ND ADDITION, according to the plat thereof on file and of record in the office of the County Recorder in and for said County.

Have caused the same to be surveyed, platted and known as KELLER'S LAKE GROVE 4TH ADDITION and do hereby dedicate to the public for public use forever the avenue, and road as shown on the plat. In witness whereof said Wayne Herr Construction Co., a Minnesota corporation, has caused these presents to be signed by its proper officer this 7th day of MAY, 1981. In witness whereof said Washington Federal Savings and Loan Association of Stillwater, a United States corporation, has caused these presents to be signed by its proper officers and its corporate seal to be hereunto affixed this 7th day of MAY, 1981. In witness whereof, said North Star Mortgage, Inc., a Minnesota corporation, has caused these presents to be signed by its proper officers this 7th day of MAY, 1981.

Signed: WAYNE HERR CONSTRUCTION CO.

Wayne J. Herr

Wayne J. Herr, president
NORTH STAR MORTGAGE, INC.

Gilbert W. Cross
Gilbert W. Cross, vice-president

Grace S. Weet
Grace S. Weet, secretary

State of Minnesota) County of Ramsey) The foregoing instrument was acknowledged before me this 7th day of May, 1981, by Wayne J. Herr, president of Wayne Herr Construction Co., a Minnesota corporation, on behalf of the corporation.



WASHINGTON FEDERAL SAVINGS AND LOAN ASSOCIATION OF STILLWATER

K. Erickson
K. Erickson, senior vice-president

Richard L. Sawyer
Richard L. Sawyer, vice-president

State of Minnesota) County of Washington) The foregoing instrument was acknowledged before me this 7th day of May, 1981, by K. Erickson, senior vice-president, and Richard L. Sawyer, vice-president, of Washington Federal Savings and Loan Association of Stillwater, a United States corporation, on behalf of the corporation.



Notary Public, Washington County, Minnesota
My Commission Expires 8-22-86

State of Minnesota) County of Ramsey) The foregoing instrument was acknowledged before me this 7 day of May, 1981, by Gilbert W. Cross, vice-president, and Grace S. Weet, secretary, of North Star Mortgage, Inc., a Minnesota corporation, on behalf of the corporation.



Notary Public, Ramsey County, Minnesota
My Commission Expires 8-17-87

I, Raymond A. Prasch, hereby certify that I have surveyed and platted the property described in the dedication of this plat as KELLER'S LAKE GROVE 4TH ADDITION; that this plat is a correct representation of said survey; that all distances are correctly shown on the plat; that all monuments have been correctly placed in the ground as shown; that the outside boundary lines are correctly designated on the plat; and there are no wetlands, easements or public highways other than as shown thereon.

Raymond A. Prasch
Raymond A. Prasch, Land Surveyor
Minnesota Registration No. 6743

State of Minnesota) County of Hennepin) The Surveyor's certificate was subscribed and sworn to before me, a Notary Public, this 7th day of MAY, 1981.

Milton E. Hyland
Milton E. Hyland, Notary Public, Hennepin County, Minnesota
My Commission Expires November 19, 1987

Approved and accepted by the City Council of the City of White Bear Lake, Minnesota, this 12th day of May, 1981.

Breadstanias
Mayor

Raymond A. Sibenaler
Clerk

No delinquent taxes and transfer entered this 20th day of May, 1981.

Lou McFenna
Director
Department of Property Taxation

By V. J. Jans Deputy

Pursuant to Chapter 7, Minnesota Laws of 1976, this plat has been reviewed and approved, this 20th day of May, 1981 and the conditions of Minnesota Statutes, Section 505.03, Subdivision 2, have been fulfilled.

F. R. Kvidera
F. R. Kvidera
Acting Ramsey County Surveyor