

CRESTVIEW FOREST

KNOW ALL PERSONS BY THESE PRESENTS: That J.R. Walker & Sons, Inc., a Minnesota Corporation, fee owner and Marvin H. Anderson Construction Company, a Minnesota Corporation, contract for deed purchaser, of the following described property, situated in the City of Maplewood, County of Ramsey, State of Minnesota:

Lot 1, Block 6, Crestview, according to the plat thereof on file and of record in the office of the County Recorder, Ramsey County, Minnesota.

Have caused the same to be surveyed, platted, and known as CRESTVIEW FOREST and do hereby dedicate to the public for the public use forever the Street, Drive and an easement over and across Lot 1, Block 9, Lot 1, Block 10, for drainage and utility purposes. In witness whereof said J.R. Walker & Sons, Inc., a Minnesota Corporation, has caused these presents to be signed by its proper officers and its corporate seal to be hereunto affixed this 24TH day of DECEMBER, 1980 and Marvin H. Anderson Construction Company, a Minnesota Corporation, has caused these presents to be signed by its proper officers and its corporate seal to be hereunto affixed this 24TH day of DECEMBER, 1980.

SIGNED:

J.R. WALKER & SONS, INC.

Warren S. Walker
Warren S. Walker, President

Robert N. Walker
Robert N. Walker, Treasurer

MARVIN H. ANDERSON CONSTRUCTION COMPANY

Marlin D. Grant
Marlin D. Grant, President

Norman C. Soderman
Norman C. Soderman, Vice-President

State of Minnesota
County of HENNEPIN
The foregoing instrument was acknowledged before me this 24TH day of DECEMBER, 1980 by Warren S. Walker, President and Robert N. Walker, Treasurer of J.R. Walker & Sons, Inc., a Minnesota Corporation, on behalf of the Corporation.



Frederic E. Haas
Notary Public, Hennepin County, Minnesota
My Commission Expires MAY 27, 1982

State of Minnesota
County of Hennepin
The foregoing instrument was acknowledged before me this 24TH day of DECEMBER, 1980 by Marlin D. Grant, President and Norman C. Soderman, Vice-President of Marvin H. Anderson Construction Company, a Minnesota Corporation, on behalf of the Corporation.



Frederic E. Haas
Notary Public, Hennepin County, Minnesota
My Commission Expires MAY 27, 1982

I, Calvin H. Hedlund, hereby certify that I have surveyed and platted the property described in the dedication of this plat as CRESTVIEW FOREST, that this plat is a correct representation of said survey; that all distances are correctly shown on the plat; that all monuments have been correctly placed in the ground as shown; that the outside boundary lines are correctly designated on the plat; and there are no wetlands, easements or public highways other than as shown thereon.

Calvin H. Hedlund
Calvin H. Hedlund, Land Surveyor
Minnesota Registration No. 5942

State of Minnesota
County of Hennepin
The Surveyor's certificate was subscribed and sworn to before me, a Notary Public, this 24TH day of DECEMBER, 1980.



Frederic E. Haas
Notary Public, Hennepin County, Minnesota
My Commission Expires MAY 27, 1982

Approved and accepted by the City Council of the City of Maplewood, Minnesota, this 16th day of October, 1980.

John Sheehan Mayor

Luella E. Austin Clerk

No delinquent taxes and transfer entered this 20th day of February 1981.

Jane McKenna Director
Department of Property Taxation

By *Jane Baltiswick* Deputy

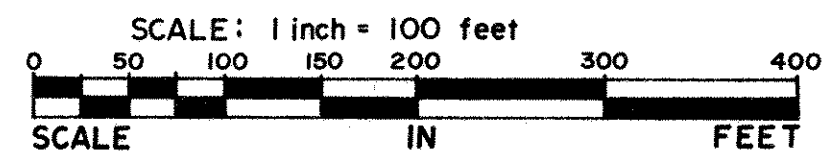
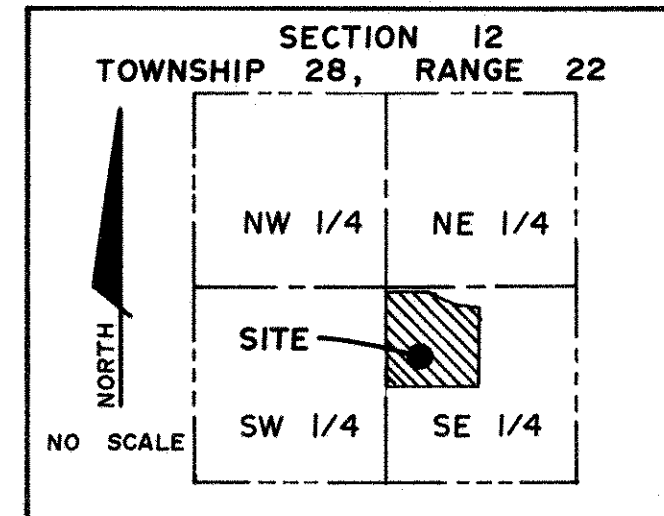
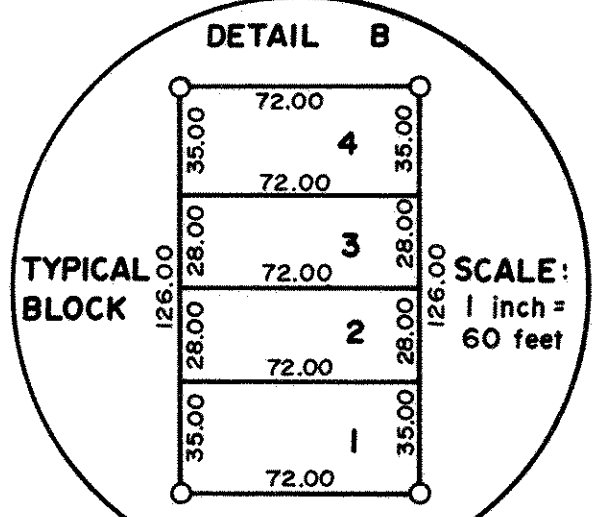
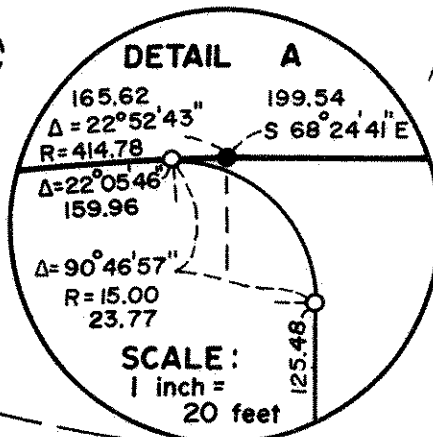
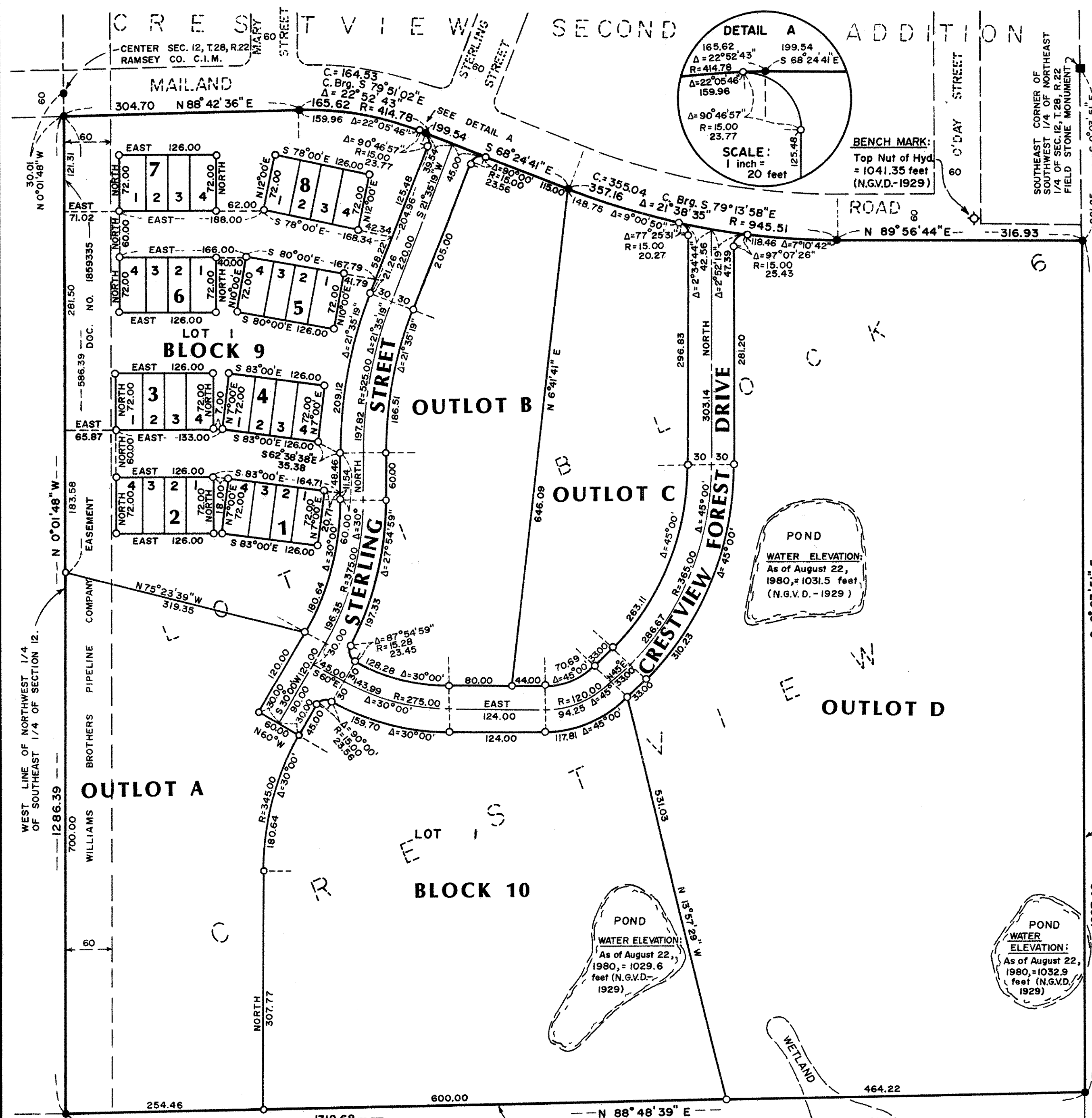
Pursuant to Chapter 7, Minnesota Laws of 1976, this plat has been approved this 20th day of February, 1981.

F.R. Kvidera
F.R. Kvidera
Acting Ramsey County Surveyor

County Recorder, County of Ramsey, State of Minnesota
I hereby certify that this plat of CRESTVIEW FOREST was filed in this office this 20th day of FEB, 1981 at 9:55 o'clock A.M. and was filed in Book 93 of Plats, Page 9, as Document No. 2107645.

Eugene H. Gibbons, County Recorder

By _____ Deputy



- Denotes monument found (1/2 inch by 1/4 inch iron monument marked by Registration No. 5942, unless otherwise indicated.)
- Denotes 1/2 inch by 1/4 inch iron monument set, marked by Registration No. 5942.

Orientation of this bearing system is on an assumed datum.