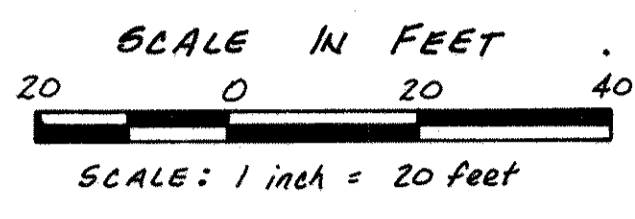
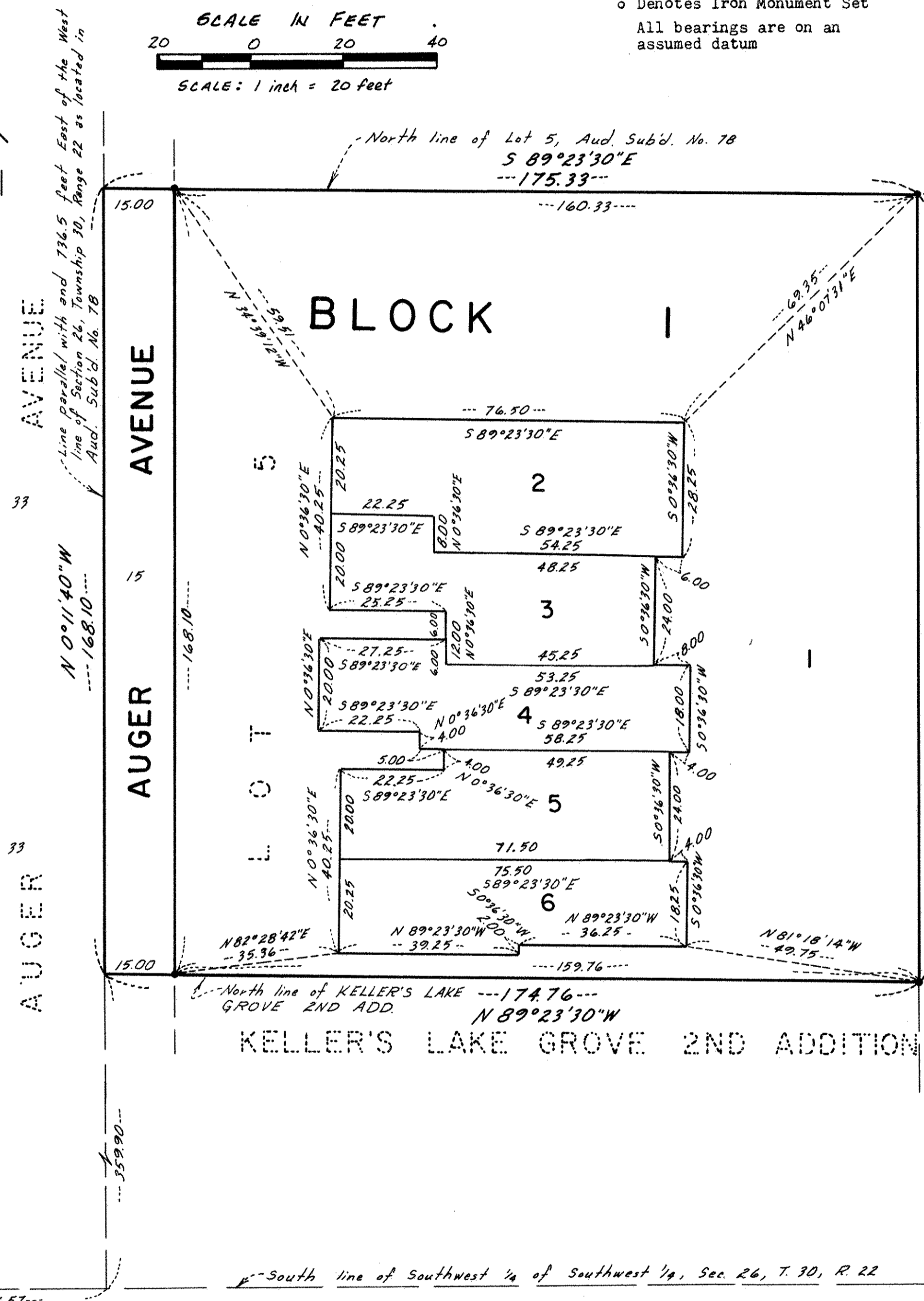


"COPY"

# KELLER'S LAKE GROVE 3RD ADDITION



- Denotes Iron Monument Found
  - Denotes Iron Monument Set
- All bearings are on an assumed datum



Know All Persons By These Presents that Wayne Herr Construction Co., a Minnesota corporation, owner and Washington Federal Savings and Loan Association, a United States corporation, mortgagee, of the following described property situated in the City of White Bear Lake, Ramsey County, Minnesota:

That part of Lot 5, Auditor's Subdivision No. 78, Ramsey County, Minnesota, according to the plat thereof on file and of record in the office of the County Recorder in and for said County, lying North of the North line of KELLER'S LAKE GROVE 2ND ADDITION, according to the plat thereof on file and of record in the office of the County Recorder in and for said County.

Have caused the same to be surveyed, platted and known as KELLER'S LAKE GROVE 3RD ADDITION and do hereby dedicate to the public for public use forever the avenue as shown on the plat. In witness whereof said Wayne Herr Construction Co., a Minnesota corporation, has caused these presents to be signed by its proper officers this 20 day of OCTOBER, 1980. In witness whereof said Washington Federal Savings and Loan Association, a United States corporation, has caused these presents to be signed by its proper officers and its corporate seal to be hereunto affixed this 20 day of OCTOBER, 1980.

Signed: WAYNE HERR CONSTRUCTION CO.  
 Wayne J. Herr, president  
 Craig H. Thaemert, vice-president  
 State of Minnesota )  
 County of Ramsey )

WASHINGTON FEDERAL SAVINGS AND LOAN ASSOCIATION  
 K. Erickson, senior vice-president  
 L.G. Gerstad, vice-president and secretary

The foregoing instrument was acknowledged before me this 20 day of OCTOBER, 1980, by Wayne J. Herr, president and Craig H. Thaemert, vice-president, of Wayne Herr Construction Co., a Minnesota corporation, on behalf of the corporation.

Notary Public, Ramsey County, Minnesota  
 My Commission Expires                     

The foregoing instrument was acknowledged before me this 20 day of October, 1980, by K. Erickson, senior vice-president, and L.G. Gerstad, vice-president and secretary, of Washington Federal Savings and Loan Association, a United States corporation, on behalf of the corporation.

Notary Public, Washington County, Minnesota  
 My Commission Expires                     

I, Raymond A. Prasch, hereby certify that I have surveyed and platted the property described in the dedication of this plat as KELLER'S LAKE GROVE 3RD ADDITION; that this plat is a correct representation of said survey; that all distances are correctly shown on the plat; that all monuments have been correctly placed in the ground as shown; that the outside boundary lines are correctly designated on the plat; and there are no wetlands, easements or public highways other than as shown thereon.

Raymond A. Prasch  
 Raymond A. Prasch, Land Surveyor  
 Minnesota Registration No. 6743

The Surveyor's certificate was subscribed and sworn to before me, a Notary Public, this 15<sup>th</sup> day of October, 1980.

Gerald T. Coyne, Notary Public, Hennepin County, Minnesota  
 My Commission Expires September 14, 1983

Approved and accepted by the City Council of the City of White Bear Lake, Minnesota, this 12<sup>th</sup> day of November, 1980.

Mayor  
 Clerk

No delinquent taxes and transfer entered this 24<sup>th</sup> day of November, 1980.

Director  
 Deputy  
 Department of Property Taxation

Pursuant to Chapter 7, Minnesota Laws of 1976, this plat has been approved this 24<sup>th</sup> day of NOVEMBER, 1980.

F.R. Kvidera  
 Acting Ramsey County Surveyor

COUNTY RECORDER, COUNTY OF RAMSEY, STATE OF MINNESOTA  
 I hereby certify that this plat of KELLER'S LAKE GROVE 3RD ADDITION was filed in this office this 26<sup>th</sup> day of NOVEMBER, 1980, at 3:31 o'clock P.M. and was filed in Book 92 of Plats, Page 50, as Document No. 209870.

EUGENE H. GIBBONS, County Recorder  
 Deputy

LOT SURVEYS COMPANY  
 Land Surveyors