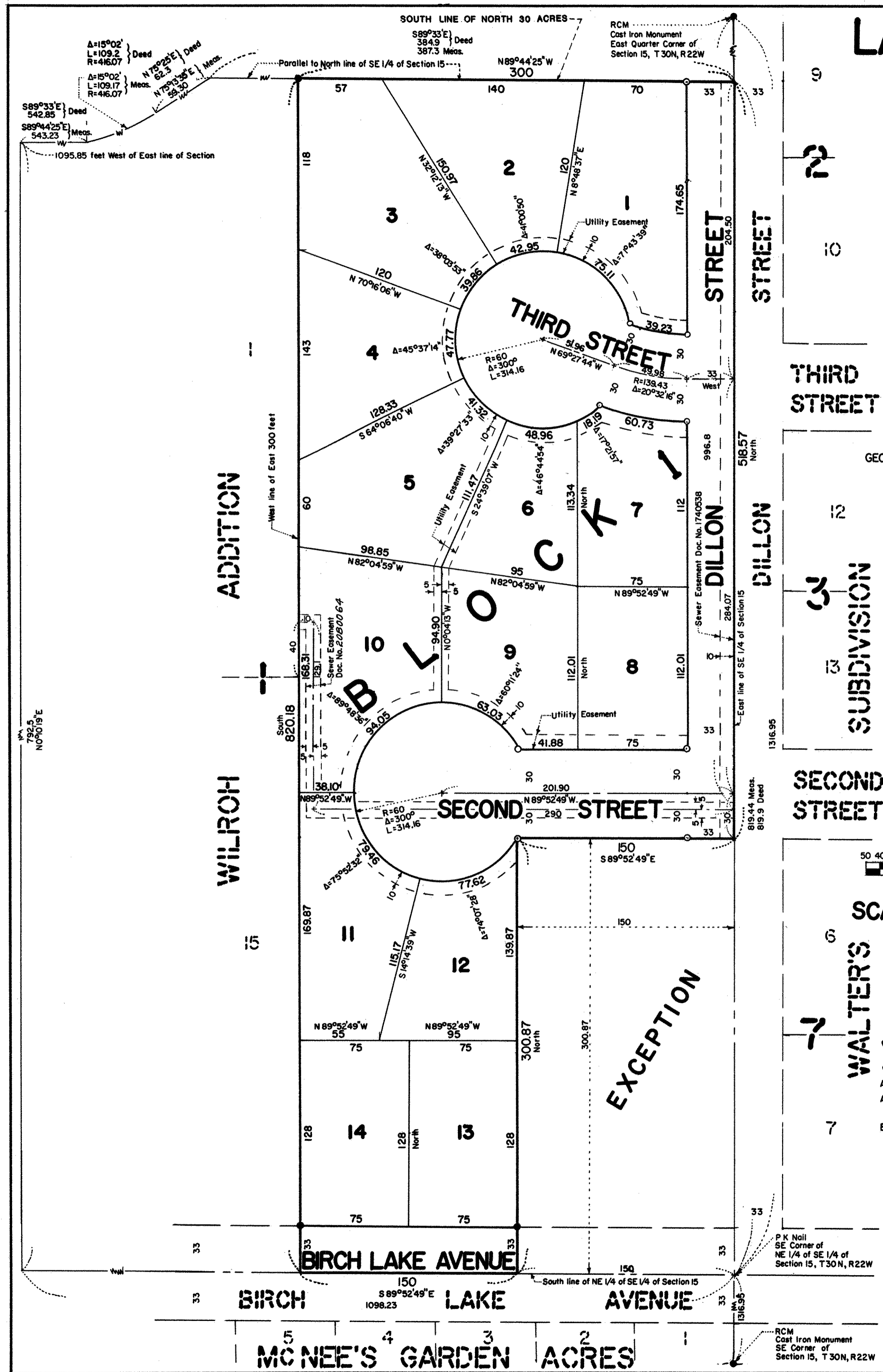


# LAKES AND HILLS 1ST ADDITION



CITY OF WHITE BEAR LAKE  
RAMSEY COUNTY, MINNESOTA

GEORGI-SCHMIDT & ASSOCIATES, INC.  
LAND SURVEYORS

SCALE: 1 inch = 50 feet

• Denotes Iron Pipe Monument found in place unless otherwise noted  
 ○ Denotes Iron Pipe Monument set  
 All distances on curves are arc lengths  
 All distances are to hundredths of a foot; thus, 75 denotes 75.00 feet  
 East line of SE 1/4 of Section 15, T30N, R22W, is assumed as bearing North.

Know All Persons By These Presents that Harry N. Ray and Joyce M. Ray, husband and wife, owners, and Lakes and Hills, Inc. a Minnesota corporation, purchaser by contract for deed of the following described property situated in the City of White Bear Lake, Ramsey County, Minnesota:

The Easterly 300 feet of the following described property: Beginning at the Southeast corner of the Northeast 1/4 of the Southeast 1/4 of Section 15, Township 30, Range 22; thence West along the South line of said Northeast 1/4 of Southeast 1/4 of Section 15, 1098.23 feet; thence North 79.25 feet, to a point which is 1095.85 feet West of the East line of said Northeast 1/4 of Southeast 1/4 of Section 15; thence South 89 degrees 33 minutes East and parallel to the North line of said Northeast 1/4 of Southeast 1/4 of Section 15, 542.85 feet; thence Northeasterly following a curve left (whose radius is 416.07 feet and central angle is 15 degrees 02 minutes) 109.2 feet; thence North 75 degrees 25 minutes East 62.3 feet; thence South 89 degrees 33 minutes East and parallel to the North line of said Northeast 1/4 of Southeast 1/4 of Section 15, 384.9 feet to the East line of said Northeast 1/4 of Southeast 1/4 of Section 15; thence South along said East line, 819.9 feet to point of beginning; except the East 150 feet of the South 300.87 feet of the Northeast 1/4 of the Southeast 1/4 of said Section 15. Subject to public roads, highways and utility easements of record.

Have caused the same to be surveyed, platted and known as LAKES AND HILLS 1ST ADDITION and do hereby dedicate to the public for public use forever the streets, avenue and utility easements as shown on the plat.

Have hereunto set our hands this 17<sup>th</sup> day of December, 1979.

Signed: Harry N. Ray Joyce M. Ray  
 Harry N. Ray Joyce M. Ray

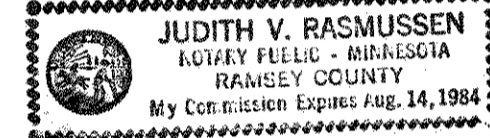
Lakes and Hills, Inc. a Minnesota corporation, has caused these presents to be signed by its proper officers this 17<sup>th</sup> day of December, 1979.

Signed: Richard P. Eichenauer its President Richard S. Nelson its Vice President  
 Richard P. Eichenauer Richard S. Nelson

STATE OF MINNESOTA ) S  
 COUNTY OF RAMSEY )

The foregoing instrument was acknowledged before me, a Notary Public, this 17<sup>th</sup> day of December, 1979, by Harry N. Ray and Joyce M. Ray, husband and wife.

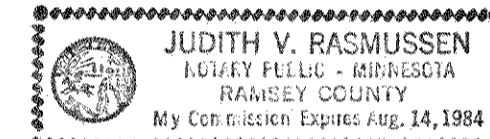
Judith V. Rasmussen  
 Notary Public, Ramsey County, Minnesota  
 My Commission Expires Aug. 14, 1984



STATE OF MINNESOTA ) S  
 COUNTY OF RAMSEY )

The foregoing instrument was acknowledged before me, a Notary Public, this 17<sup>th</sup> day of December, 1979, by Richard P. Eichenauer its President, and by Richard S. Nelson its Vice President of Lakes and Hills, Inc., a Minnesota corporation, on behalf of the corporation.

Judith V. Rasmussen  
 Notary Public, Ramsey County, Minnesota  
 My Commission Expires Aug. 14, 1984



I, Donald W. Schmidt, hereby certify that I have surveyed and platted the property described in the dedication of this plat as LAKES AND HILLS 1ST ADDITION; that this plat is a correct representation of said survey; that all distances are correctly shown on the plat; that all monuments have been correctly placed in the ground as shown; that the outside boundary lines are correctly designated on the plat; and there are no wet lands, easements or public highways other than as shown thereon.

Donald W. Schmidt  
 Registered Land Surveyor, Minnesota Registration No. 10459

STATE OF MINNESOTA ) S  
 COUNTY OF RAMSEY )

The Surveyor's certificate was subscribed and sworn to before me, a Notary Public, this 11<sup>th</sup> day of December, 1979.

Alan John Irwin  
 Notary Public, Anoka County, Minnesota  
 My Commission Expires MAY 23, 1986



Approved and accepted by the City Council of the City of White Bear Lake, Minnesota this 8<sup>th</sup> day of January, 1980.

Signed: Brad Thomas Mayor Raymond R. Schreiber Clerk

No delinquent taxes and transfer entered this 5<sup>th</sup> day of May, 1980.

Low Mc Kenna Director  
 Department of Property Taxation  
 By: [Signature] Deputy

Pursuant to Chapter 7, Minnesota Laws of 1976, this plat has been approved this 28<sup>th</sup> day of May, 1980.

F. R. Kvidera  
 F. R. Kvidera, Acting Ramsey County Surveyor

County Recorder, County of Ramsey, State of Minnesota

I hereby certify that this plat of LAKES AND HILLS 1ST ADDITION was filed in this office this 29<sup>th</sup> day of MAY, 1980, at 8:33 o'clock A.M. and was filed in Book 92 of Plats, Page 30, as Document No. 2080132.

Eugene H. Gibbons, County Recorder

By: \_\_\_\_\_ Deputy