

BACCHUS ORCHARD PARK

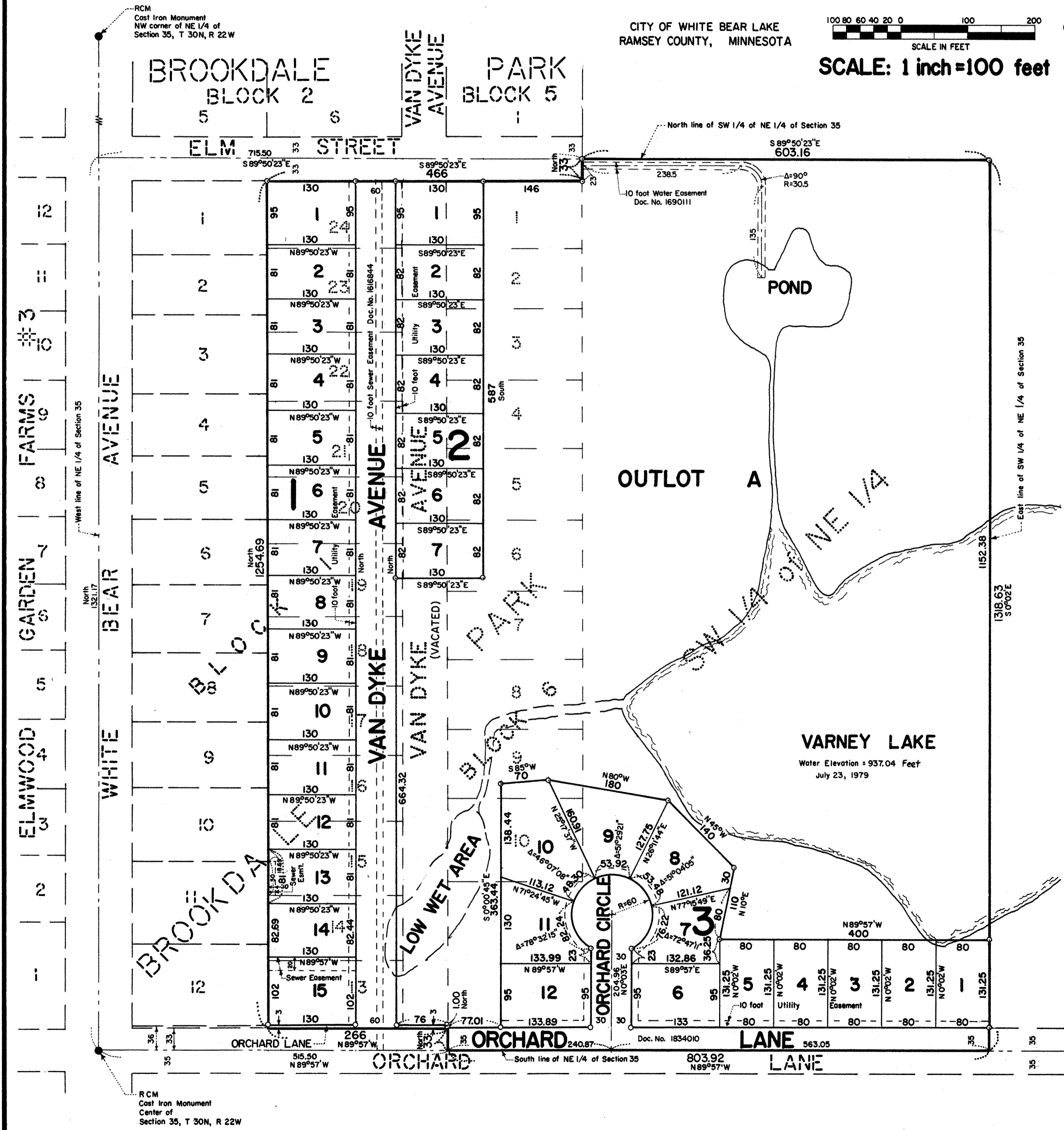
CITY OF WHITE BEAR LAKE
RAMSEY COUNTY, MINNESOTA

GEORGI-SCHMIDT & ASSOCIATES INC.
LAND SURVEYORS



SCALE: 1 inch = 100 feet

o Denotes Iron Pipe Monument Set.
All distances are to hundredths of a foot;
thus 80 denotes 80.00 feet.
All distances on curves are arc lengths.
West line of NE 1/4 of Section 35, T30N, R22W,
is assumed as bearing North.
B.M. Elevation 943.71 feet is the top of the Cast
Iron Monument at Center of Section 35, T30N, R22W.
City of White Bear and U.S.G.S. datum.



Know All Persons By These Presents that Kenneth W. Bacchus, Inc., a Minnesota corporation, owner of the following described property situated in the City of White Bear Lake, Ramsey County, Minnesota:
Lots 13 through 24 inclusive, Block 1, and all of Block 6, all of said lots being in Brookdale Park, and adjoining vacated Van Dyke Avenue between the South line of Lot 13, Block 1 extended, and the North line of Lot 24, Block 1 extended; subject to street widening over the South 3 feet of said Lot 13, Block 1, and that part of the SW 1/4 of the NE 1/4 of Section 35, T30N, R22W lying South and East of Brookdale Park, subject to street widening over the South 35 feet thereof. Subject to easements of record.

Have caused the same to be surveyed, platted and known as BACCHUS ORCHARD PARK and do hereby dedicate to the public for public use forever the avenue, circle, lane, and utility, sewer and water easements as shown on the plat.

Have hereunto set our hands and seals this 10th day of September, 1979.

Signed:
Kenneth W. Bacchus, Inc., a Minnesota corporation
Kenneth W. Bacchus President
Gordon Manaiage Secretary

STATE OF MINNESOTA) S S
COUNTY OF RAMSEY)

The foregoing instrument was acknowledged before me, a Notary Public, this 10th day of September, 1979, by Kenneth W. Bacchus, its President, and by Gordon Manaiage, its Secretary of Kenneth W. Bacchus, Inc., a Minnesota corporation, on behalf of the corporation.

Eugene H. Gibbons
Notary Public, Ramsey County, Minnesota
My Commission Expires August 3, 1980

I, Donald W. Schmidt, hereby certify that I have surveyed and platted the property described in the dedication of this plat as BACCHUS ORCHARD PARK; that this plat is a correct representation of said survey; that all distances are correctly shown on the plat; that all monuments have been correctly placed in the ground as shown; that the outside boundary lines are correctly designated on the plat; and there are no wet lands, easements or public highways other than as shown thereon.

Donald W. Schmidt
Registered Land Surveyor, Minnesota Registration No. 10459

STATE OF MINNESOTA) S S
COUNTY OF RAMSEY)

The Surveyor's certificate was subscribed and sworn to before me, a Notary Public, this 7th day of August, 1979.

Alan J. Irwin
Notary Public, Anoka County, Minnesota
My Commission Expires MAY 23, 1986

ALAN JOHN IRWIN
NOTARY PUBLIC - MINNESOTA
ANOKA COUNTY
My commission expires May 23, 1986

Approved and accepted by the City Council of the City of White Bear Lake, Minnesota, this 12th day of June, 1979.

Brad Stenius Mayor
Raymond R. Liebschneider Clerk

No delinquent taxes and transfer entered this 1st day of October, 1979.

Low McKeena Director
Department of Property Taxation

Pursuant to Chapter 7, Minnesota Laws of 1976, this plat has been approved this 2nd day of October, 1979.

F. R. Kvidera
F. R. Kvidera, Acting Ramsey County Surveyor

County Recorder, County of Ramsey, State of Minnesota

I hereby certify that this plat of BACCHUS ORCHARD PARK was filed in this office this 2nd day of October, 1979, at 10:15 o'clock A.M. and was filed in Book 92 of Plats, Page 7, as document No. 2057182.

Eugene H. Gibbons, County Recorder

By _____ Deputy