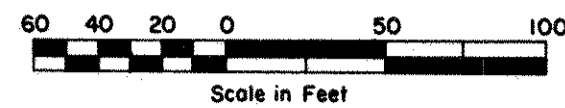


MIKEWORTH ADDITION

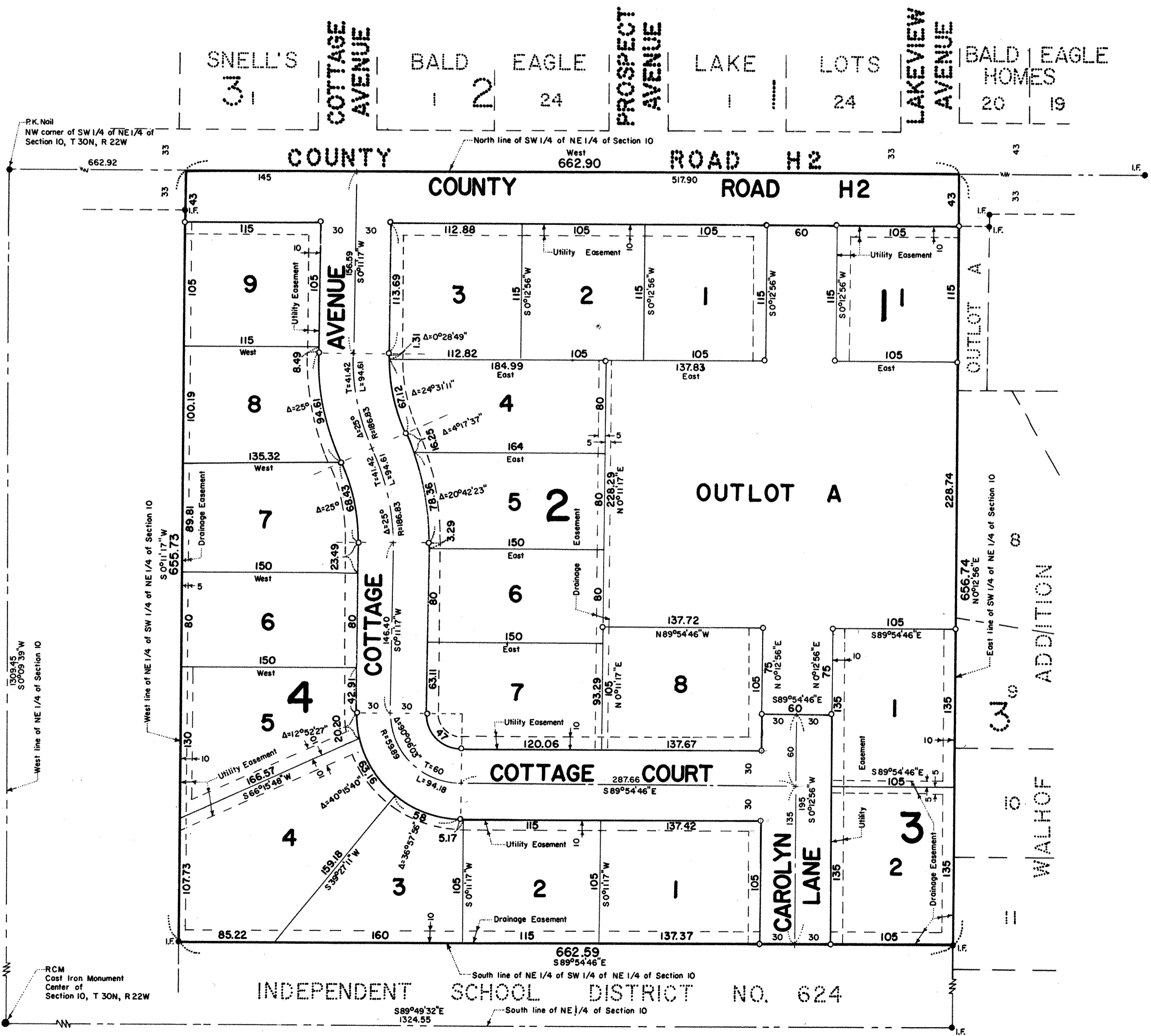
o Denotes Iron Pipe Monument.
 I.F. Denotes Iron Monument found in place.
 All distances are to hundredths of a foot;
 thus, 115 denotes 115.00 feet.
 All distances on curves are arc lengths
 North line of SW 1/4 of NE 1/4 of Section 10,
 T 30N, R 22W, is assumed as bearing
 West.



WHITE BEAR TOWNSHIP
 RAMSEY COUNTY, MINNESOTA

SCALE: 1 inch=60 feet

GEORGI-SCHMIDT & ASSOCIATES, INC.
 LAND SURVEYORS



Know All Persons By These Presents that Lester H. Mikeworth and Doris H. Mikeworth, husband and wife, owners and Twin City Federal Savings and Loan Association, a United States corporation, mortgagee, of the following described property situated in White Bear Township, Ramsey County, Minnesota:

The Northeast 1/4 of the Southwest 1/4 of the Northeast 1/4 of Section 10, T30N, R22W.

Have caused the same to be surveyed, platted and known as MIKEWORTH ADDITION and do hereby dedicate to the public for public use forever the avenue, court, road, lane, and utility and drainage easements as shown on the plat.

Have hereunto set our hands this 25th day of June, 1979.

Signed: Lester H. Mikeworth, Doris H. Mikeworth

Have hereunto set our hands and seal this 27th day of June, 1979.
 Signed: Twin City Federal Savings and Loan Association, a United States Corporation.

By its Vice President, By its Assistant Secretary

STATE OF MINNESOTA), S.S.
 COUNTY OF RAMSEY)

The foregoing instrument was acknowledged before me this 25th day of June, 1979, by Lester H. Mikeworth and Doris H. Mikeworth, husband and wife.

Notary Public, Ramsey County, Minnesota
 My Commission Expires

STATE OF MINNESOTA), S.S.
 COUNTY OF RAMSEY)

The foregoing instrument was acknowledged before me this 27th day of June, 1979, by U.S. Raym... its Vice President and by Walker A. ... its Asst. Secretary of Twin City Federal Savings and Loan Association, a United States Corporation, on behalf of the corporation.

Notary Public, Ramsey County, Minnesota
 My Commission Expires

I, Donald W. Schmidt, hereby certify that I have surveyed and platted the property described in the dedication of this plat as MIKEWORTH ADDITION; that this plat is a correct representation of said survey; that all distances are correctly shown on the plat; that all monuments have been correctly placed in the ground as shown; that the outside boundary lines are correctly designated on the plat; and there are no wet lands, or public highways other than as shown thereon.

Registered Land Surveyor
 Minnesota Registration No. 10459

STATE OF MINNESOTA), S.S.
 COUNTY OF RAMSEY)

The Surveyor's certificate was subscribed and sworn to before me a Notary Public, this 28th day of June, 1979.

Notary Public, Ramsey County, Minnesota
 My Commission Expires

Approved and accepted by the Township Board of the Township of White Bear, Minnesota, this 3rd day of July, 1979.

Chairman, Clerk

No delinquent taxes and transfer entered this 11th day of July, 1979.

Director, Deputy

Pursuant to Chapter 7, Minnesota Laws of 1976 this plat has been approved this 12th day of July, 1979.

Acting Ramsey County Surveyor

County Recorder, County of Ramsey, State of Minnesota

I hereby certify that this plat of MIKEWORTH ADDITION was filed in this office this 12th day of July, 1979, at 10:16 o'clock A.M. and was filed in Book 91 of Plats, Page 45, as Document No. 2047380.

By Deputy