

# LA BELLE'S 2ND ADDITION

C. E. COULTER & ASSOCIATES, INC.  
LAND SURVEYORS

In witness whereof said Sheehy Construction Company, a Minnesota corporation have hereunto set our hands and seals this 3 day of APRIL, 1978.

Signed: Sheehy Construction Company.  
By Paul F. Frerichs, Its VICE PRESIDENT  
PAUL FRERICHS

State of MINNESOTA  
County of HENNEPIN  
The foregoing instrument was acknowledged before me this 7th day of APRIL, 1978, by R.R. CHAMP  
VICE PRESIDENT and R.E. AHART, ASSISTANT SECRETARY-TREASURER of Allied Central Stores, Inc. a Missouri corporation, on behalf of the corporation.

Steven A. Schumister  
Notary Public, \_\_\_\_\_ County, \_\_\_\_\_  
My commission expires \_\_\_\_\_  
STEVEN A. SCHUMISTER  
NOTARY PUBLIC - MINNESOTA  
RAMSEY COUNTY  
My Comm. Expires Dec. 29, 1980

State of MINNESOTA  
County of HENNEPIN  
The foregoing instrument was acknowledged before me this 4th day of APRIL, 1978, by LEONARD W. VANASSE  
PRESIDENT and LOWELL W. BLESS, SECRETARY of M-M Development Corporation, a Minnesota corporation, on behalf of the corporation.

Linda L. Brooks  
Notary Public, \_\_\_\_\_ County, \_\_\_\_\_  
My commission expires \_\_\_\_\_  
LINDA L. BROOKS  
NOTARY PUBLIC - MINNESOTA  
HENNEPIN COUNTY  
My Comm. Expires June 21, 1980

State of MINNESOTA  
County of RAMSEY  
The foregoing instrument was acknowledged before me this 3rd day of APRIL, 1978, by PAUL FRERICHS  
of Sheehy Construction Company, a Minnesota corporation, on behalf of the corporation.

J.M. Benson  
Notary Public, \_\_\_\_\_ County, \_\_\_\_\_  
My commission expires \_\_\_\_\_  
J. M. BENSON  
NOTARY PUBLIC - MINNESOTA  
RAMSEY COUNTY  
My Commission Expires July 11, 1982

I, John A. Peterson, hereby certify that I have surveyed and platted the property described in the dedication of this plat as LA BELLE'S 2ND ADDITION; that this plat is a correct representation of said survey; that all distances are correctly shown on the plat; that all monuments have been correctly placed in the ground as shown; that the outside boundary lines are correctly designated on the plat; and that there are no wet lands, easements or public highways other than as shown thereon.

John A. Peterson  
Registered Land Surveyor, Minnesota Registration No. 6267

State of Minnesota)  
County of Hennepin)  
The surveyors certificate was subscribed and sworn to before me, a Notary Public, this 27th day of March, 1978.

Frank R. Lenz, Jr.  
Notary Public, Hennepin County, Minnesota  
My commission expires July 31, 1979  
FRANK R. LENZ, JR.  
NOTARY PUBLIC - MINNESOTA  
HENNEPIN COUNTY  
My Commission Expires July 31, 1979

Approved and accepted by the City Council of the City of Roseville, Minnesota, this 27th day of March, 1978.

James J. Anderson  
Mayor  
James J. Anderson  
Clerk

No delinquent taxes and transfer entered this 14th day of April, 1978.

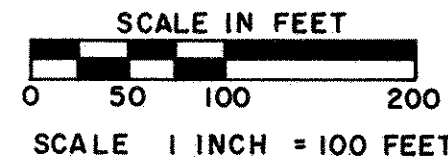
Low M. Kenna Director By Mr. Welcher Deputy  
Department of Property Taxation

County Recorder  
Registrar of Titles, County of Ramsey, State of Minnesota  
I hereby certify that this plat of LA BELLE'S 2ND ADDITION was filed in this office this \_\_\_\_\_ day of \_\_\_\_\_ 197\_\_\_\_ at \_\_\_\_\_ o'clock \_\_\_\_\_ M.  
and was filed in Book \_\_\_\_\_ of Plats, Page \_\_\_\_\_ and that copies were compared with the official plat and found to be true and correct copies thereof.

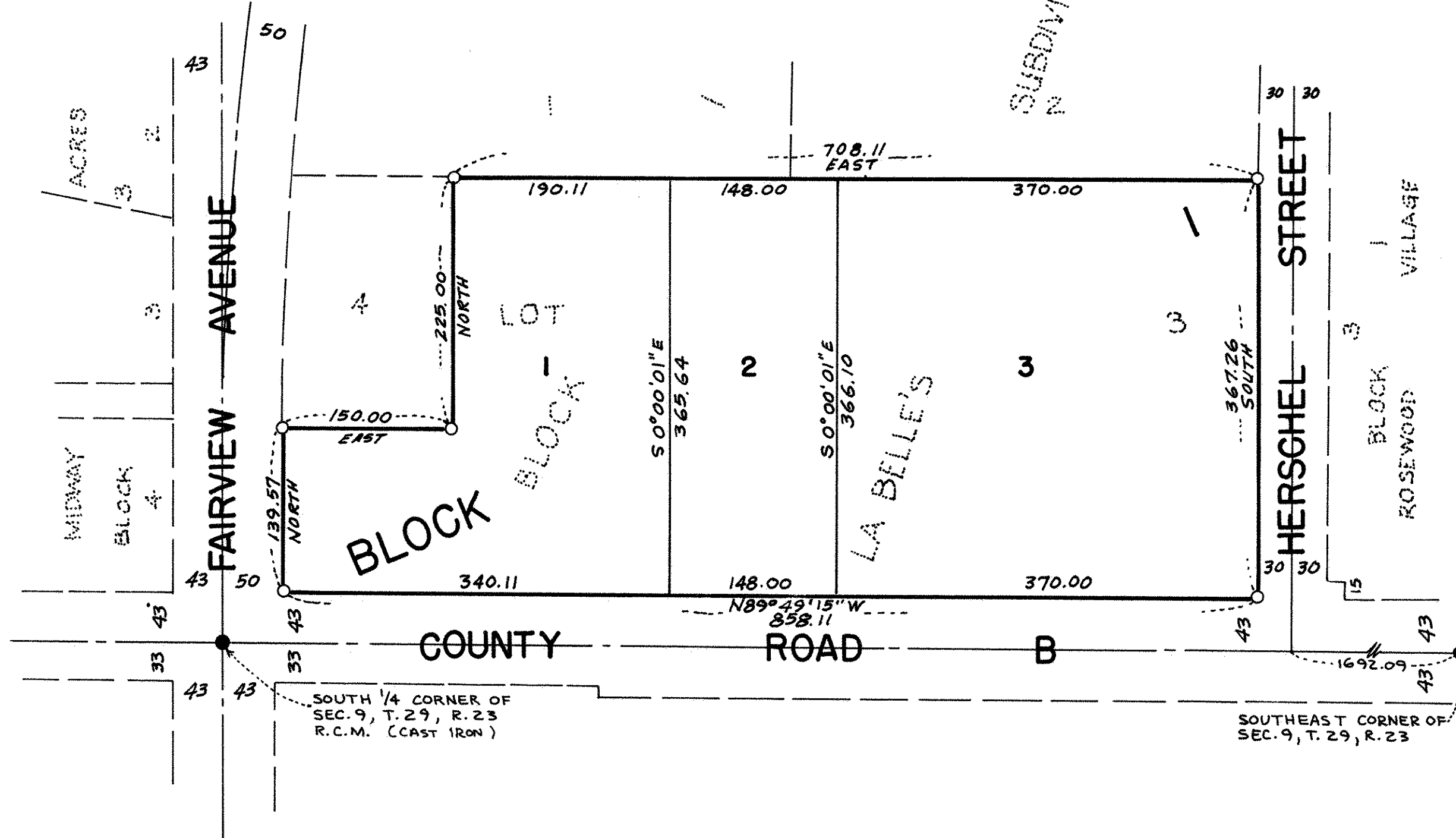
Eugene H. Gibbons  
County Recorder Registrar of Titles  
By \_\_\_\_\_ Deputy

Pursuant to Chapter 7, Minnesota Laws of 1976, this plat has been approved this 14th day of April, 1978.

F. R. Kvidera  
F. R. Kvidera  
Acting Ramsey County Surveyor



BEARINGS ARE ON AN ASSUMED DATUM  
○ DENOTES IRON MONUMENT  
● DENOTES MONUMENT (FOUND)



Know All Persons By These Presents that Allied Central Stores, Inc., a Missouri corporation, owner, and M-M Development Corporation, a Minnesota corporation, contract for deed purchaser, and Sheehy Construction Company, a Minnesota corporation, contract for deed purchaser of the following described property situated in the City of Roseville, Ramsey County, Minnesota:

Lot 3, Block 1, LA BELLE'S SUBDIVISION, according to the plat thereof on file and of record in the office of the Registrar of Titles in and for Ramsey County, Minnesota.

Have caused the same to be surveyed, platted and known as LA BELLE'S 2ND ADDITION.

In witness whereof said Allied Central Stores, Inc., a Missouri corporation have hereunto set our hands and seals this 7th day of APRIL, 1978.

Signed: Allied Central Stores, Inc.  
By R.R. Champ, Its VICE PRESIDENT  
By R.E. Ahart, Its ASSISTANT SECRETARY-TREASURER

In witness whereof said M-M Development Corporation, a Minnesota corporation have hereunto set our hands and seals this 4th day of APRIL, 1978.

Signed: M-M Development Corporation.  
By Leonard W. Vanasse, Its PRESIDENT  
By Lowell W. Bless, Its SECRETARY