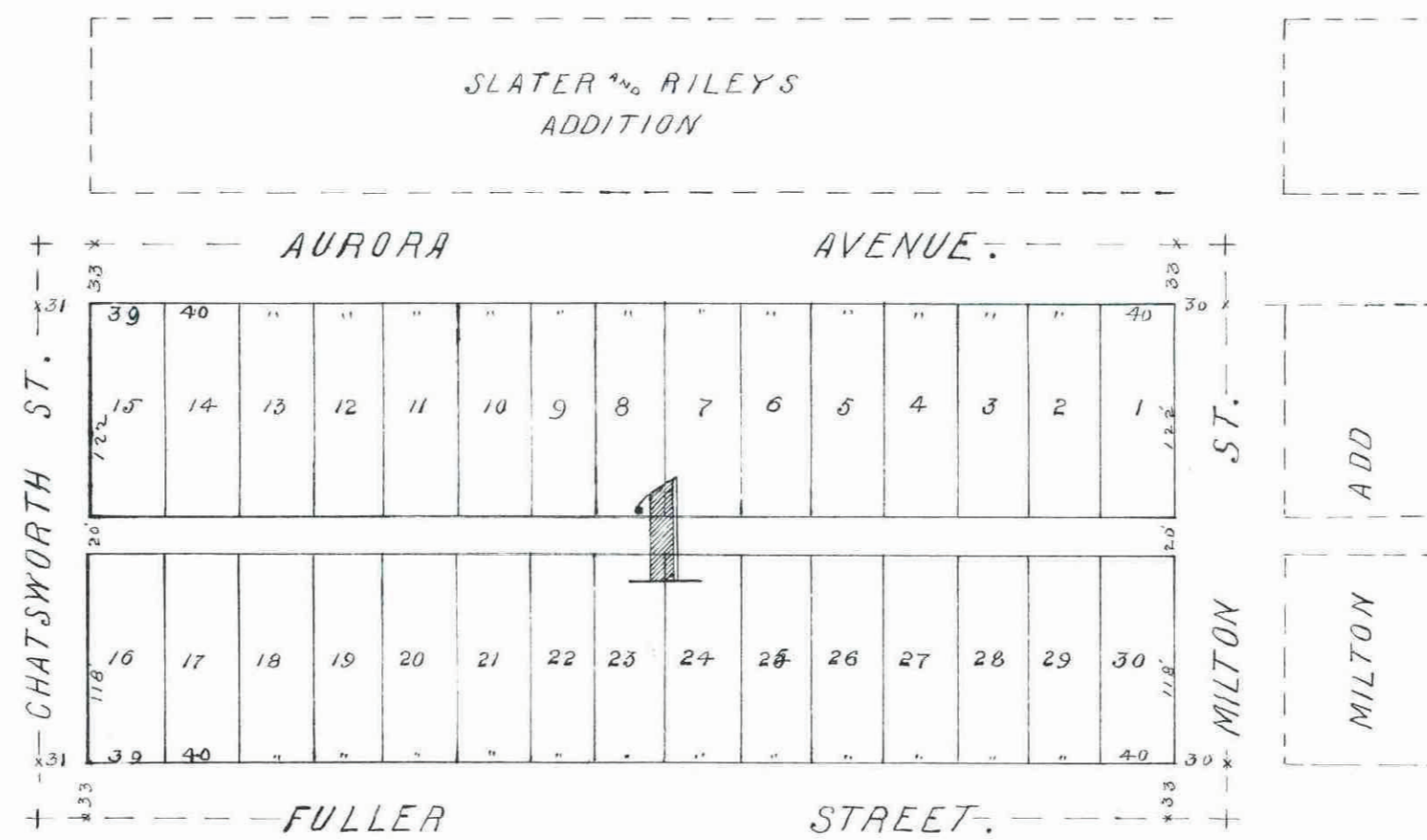


SLATERS ADDITION

TO THE
CITY OF ST PAUL MINN.

SURVEYED IN FEBRUARY 1886.

Scale 100ft = 1 inch.



This plat document is an UNOFFICIAL copy of a Subdivision Plat or Registered Land Survey and is made available for information purposes only.

To obtain an official copy please contact the Ramsey County Recorder's Office.

STATE OF MINNESOTA } ss.
County of Ramsey }
Office of the Register of Deeds.
This is to certify that the within instrument was filed for Record in the Office of St. Paul, on the 8th day of March, A. D. 1886 at 4 o'clock P. M., and that the same is recorded in Book... of Plate... pages...
By: R. C. Wiley Register of Deeds.

I hereby certify to having surveyed and platted the property as described on this map as "SLATERS ADDITION" and have placed iron monuments at the corners of each and every block and the same is correct as shown on this map.

Chas A Forbes
Surveyor

State of Minnesota }
County of Ramsey } ss. On this 26th day of February, AD 1886 personally came before me the undersigned Chas D. Forbes to me well known, and acknowledged that he executed the foregoing certificate as his own free act and deed.

W. L. Barteau
Notary Public
Ramsey Co Minn

I hereby recommend the acceptance of the within plat by the common council.

L. W. Rundlett
City Engineer

Accepted by the Common Council of the City of St. Paul on the 27th day of February 1886

City Clerk

This is to certify that Thomas Slater and Ann. E. Slater his wife proprietors of the South half of the North half of the West half of North East quarter of the South West quarter of Section 35 Range 23 Town 29 the above described five acres are further described as follows bounded on the North by Aurora Avenue when it is opened. On the East by Milton Street when it is opened. On the South by Fuller Street when it is opened. On the West by Chatsworth Street, when it is opened being in the City of St. Paul, as shown by this plat and hereby dedicate to the public and for the public use forever all the streets, avenues, alleys, parks, and boulevards as herein indicated.

In presence of W. L. Barteau Thomas Slater
Chas A Forbes Ann E Slater

State of Minnesota }
County of Ramsey } ss. On this 26th day of February, AD 1886 personally came before me the undersigned Thomas Slater and Ann. E. Slater, to me well known and they acknowledged that they executed the foregoing certificate for the uses and purposes therein expressed and as their free act and deed.

W. L. Barteau
Notary Public

Accepted and approved this 27th day of February AD 1886

J. B. Johnson
Jas Starkey
Plat Commissioners

Taxes Paid March 8 1886
County Auditor Ramsey Co Minn

Assessments paid March 8 1886
City Treasurer St Paul

OFFICE OF COUNTY TREASURER, ST. PAUL
MAR 8 1886
1886 TAX PAID
W. L. Barteau
County Clerk