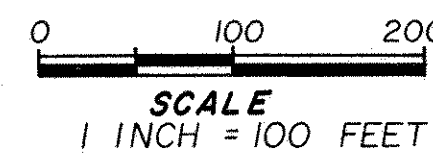
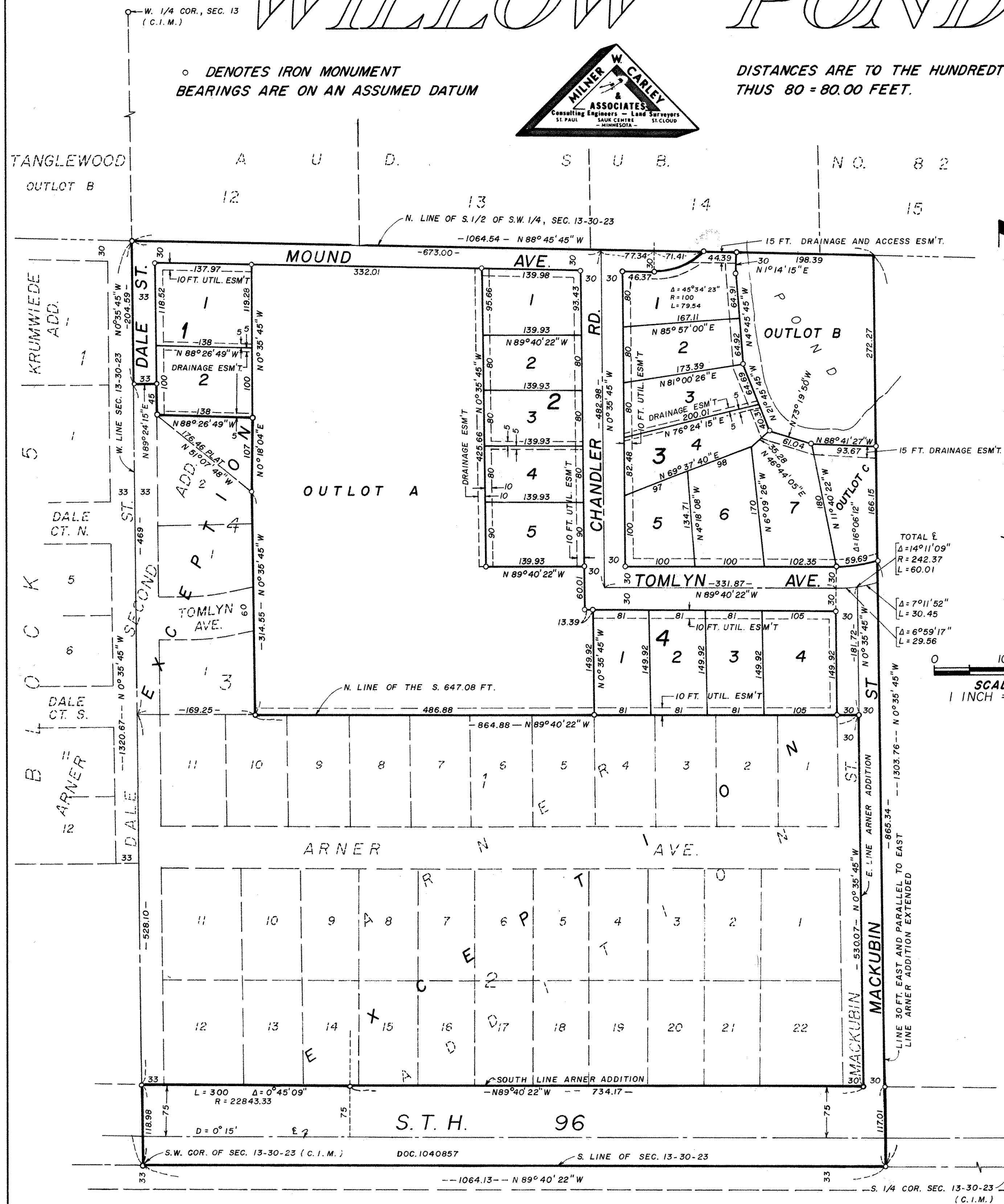


# WILLOW POND

○ DENOTES IRON MONUMENT  
BEARINGS ARE ON AN ASSUMED DATUM



DISTANCES ARE TO THE HUNDREDTH,  
THUS 80 = 80.00 FEET.



Know All Persons By These Presents that Robert P. Walsh and Diane F. Walsh, husband and wife, owners and the First State Bank of New Brighton, a Minnesota corporation, mortgagee of the following described property situated in the City of Shoreview, Ramsey County, Minnesota:

That part of the South one-half of the Southwest Quarter of Section 13, Township 30, Range 23, lying Westerly of a line 30 feet east of and parallel to the east line of Arner Addition and the northerly extension of said line, except parts therein of Arner Addition and Arner Second Addition and except a triangular parcel adjoining Lot 2, Block 4 of said Arner Second Addition described as follows: Commencing at the Northwest corner of Lot 2, Block 4, Arner Second Addition, thence East 138 feet, thence South 107 feet, thence Northwesterly 175 feet, along the Northeasterly line of said Lot 2, Block 4, Arner Second Addition to the point of beginning. Subject to S.T.H. 96, according to the United States Government Survey thereof.

Have caused the same to surveyed, platted and known as WILLOW POND and do hereby dedicate to the public for public use forever the streets, avenues, road, highway, and drainage, utility and access easements and do hereby donate to the City of Shoreview Outlot B, for storm water ponding, drainage and public utilities all as shown on the plat.

Have hereunto set our hands this 10<sup>th</sup> day of Aug., 1976.

Signed: Robert P. Walsh Robert P. Walsh  
Diane F. Walsh Diane F. Walsh

Have hereunto set our hands and seals this 1<sup>st</sup> day of Aug., 1976.

Signed:  
First State Bank of New Brighton, a Minnesota corporation  
By Diane W. Larson its PRESIDENT By Donald K. Ross its Vice President

STATE OF MINNESOTA }  
COUNTY OF Ramsey } SS The foregoing instrument was acknowledged before me this 10<sup>th</sup> day of Aug., 1976 by Robert P. Walsh and Diane F. Walsh, husband and wife.  
Harold E. Walsh  
Notary Public, Ramsey County, Minnesota  
My Commission Expires \_\_\_\_\_

STATE OF MINNESOTA }  
COUNTY OF Ramsey } SS The foregoing instrument was acknowledged before me this 4<sup>th</sup> day of August, 1976 by Diane W. Larson its President and by Donald K. Ross its Vice President of the First State Bank of New Brighton, a Minnesota corporation, on behalf of the corporation.  
James R. Werner  
Notary Public, Ramsey County, Minnesota  
My Commission Expires Feb 7, 1980

I, Donald U. Carley, hereby certify that I have surveyed and platted the property described in the dedication of this plat as WILLOW POND; that this plat is a correct representation of said survey; that all distances are correctly shown on the plat; that all monuments have been correctly placed in the ground as shown; that the outside boundary lines are correctly designated on the plat; and there are no wet lands, easements or public highways other than as shown thereon.

Donald U. Carley  
Donald U. Carley, Registered Surveyor  
Minnesota Certificate No. 358

STATE OF MINNESOTA }  
COUNTY OF Ramsey } SS The Surveyor's certificate was subscribed and sworn to before me, a Notary Public, this 19 day of July, 1976.  
Charles J. Lundberg  
Notary Public, Ramsey County, Minnesota  
My Commission Expires 4-29-77

Approved and accepted by the City Council of Shoreview, Minnesota this 2<sup>nd</sup> day of Aug., 1976.  
James R. Olson Mayor  
Stacy P. Dickson Clerk

No delinquent taxes and transfer entered this 24<sup>th</sup> day of August, 1976.  
Law McKeanna Director. By W. Oklund Deputy  
Department of Property Taxation

County Recorder,  
Registrar of Titles, County of Ramsey, State of Minnesota  
I hereby certify that this plat of WILLOW POND was filed in this office this 9<sup>th</sup> day of SEPT., 1976 at \_\_\_\_\_ o'clock \_\_\_\_\_ M. and was filed in Book 87 of Plats. Page 35 and that the copies were compared with the Official Plat and found to true and correct copies thereof.

Robert T. Gibbons  
County Recorder Registrar of Titles  
By \_\_\_\_\_ Deputy

Pursuant to Chapter 7, Minnesota Laws of 1976, this plat has been approved this 26<sup>th</sup> day of August, 1976.

By Ronald F. Meyer  
Ronald F. Meyer  
Acting Ramsey County Surveyor

Abstract # 1944 388

## Willow Pond