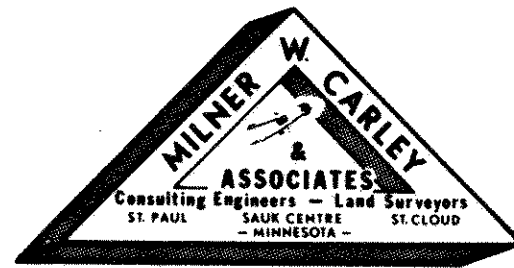
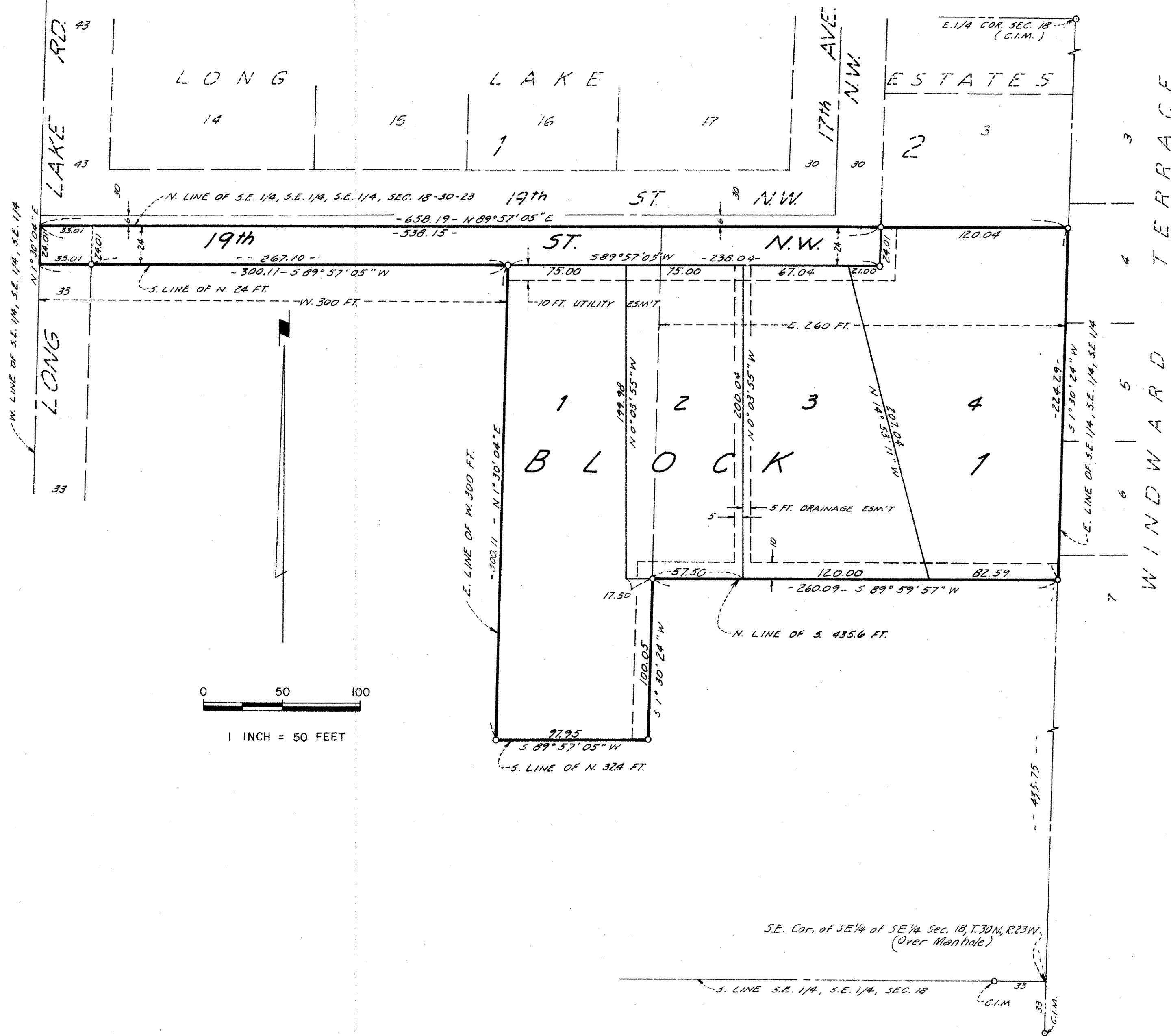


HARTMANN ADDITION



o INDICATES IRON MONUMENT

BEARINGS ARE ON AN ASSUMED DATUM



Know All Persons By These Presents that Hartmann Builders Inc., a Minnesota corporation, owners and the First Robbinsdale State Bank, a Minnesota corporation, mortgagee of the following described property situated in the City of New Brighton, Ramsey County, Minnesota:

The North 24 feet of the West 300 feet of the Southeast quarter of the Southeast quarter of the Southeast quarter of Section 18, Township 30 North, Range 23 West.

AND The North 324 feet of the Southeast quarter of the Southeast quarter of the Southeast quarter of Section 18, Township 30 North, Range 23 West, lying East of the West 300 feet thereof and lying West of the East 260 feet thereof, in Ramsey County, Minnesota.

AND The East 260 feet of the Southeast quarter of the Southeast quarter of the Southeast quarter of Section 18, Township 30 North, Range 23 West, lying North of the South 435.6 feet thereof.

Have caused the same to be surveyed, platted and known as HARTMANN ADDITION and do hereby dedicate to the public for public use forever the street, drainage and utility easements as shown on the plat.

Have hereunto set our hands and seals this 2nd day of August, 1976.

Signed:
 Hartmann Builders Inc., a Minnesota corporation
 By Brendis J. Hartmann its President By Eloynne J. Hartmann its Secretary
 Have hereunto set our hands and seals this 2nd day of August, 1976.

Signed:
 First Robbinsdale State Bank, a Minnesota corporation
 By W. J. [Signature] its Vice Pres By Don [Signature] its Asst. Cashier

STATE OF MINNESOTA }
 COUNTY OF Hennepin } SS The foregoing instrument was acknowledged before me this 2nd day of August, 1976 by Brendis J. Hartmann its President and by Eloynne J. Hartmann its Secretary of Hartmann Builders Inc., a Minnesota corporation, on behalf of the corporation.



Nancy A. Andera
 Notary Public, Hennepin County, Minnesota
 My Commission Expires April 7, 1982

STATE OF MINNESOTA }
 COUNTY OF Hennepin } SS The foregoing instrument was acknowledged before me this 2nd day of August, 1976 by L. W. Ransahl its Vice President and by Dave L. Peternik its Assistant Cashier of the First Robbinsdale State Bank, a Minnesota corporation.

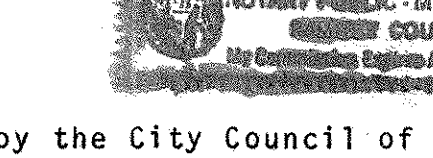


Nancy A. Andera
 Notary Public, Hennepin County, Minnesota
 My Commission Expires April 7, 1982

I, Donald O. Carley, hereby certify that I have surveyed and platted the property described in the dedication of this plat as HARTMANN ADDITION; that this plat is a correct representation of said survey; that all distances are correctly shown on the plat; that all monuments have been correctly placed in the ground as shown; that the outside boundary lines are correctly designated on the plat; and there are no wet lands, easements or public highways other than as shown thereon.

Donald O. Carley
 Donald O. Carley, Registered Surveyor
 Minnesota Registration No. 3527

STATE OF MINNESOTA }
 COUNTY OF Ramsey } SS The Surveyor's certificate was subscribed to and sworn to before me, a Notary Public, this 28 day of July, 1976.



Shirley J. Lundberg
 Notary Public, Ramsey County, Minnesota
 My Commission Expires 4-29-77

Approved and accepted by the City Council of New Brighton, Minnesota this 26th day of May, 1976
Gayle C. Bromander Mayor Vernon C. Erickson Clerk

No delinquent taxes and transfer entered this 12th day of August, 1976.
Son [Signature] Director By [Signature] Deputy
 Department of Property Taxation

Registrar of Titles, County of Ramsey, State of Minnesota
 I hereby certify that this plat of HARTMANN ADDITION was filed in this office this 12th day of August, 1976 at 10 O'Clock A.M. and was filed in Book of Plats, Page and that the copies were compared with the Official Plat and found to be true and correct copies thereof.

Robert T. Gibbons
 County Recorder Registrar of Titles
 By Deputy

Pursuant to Chapter 7, Minnesota Laws of 1976, this plat has been approved this 12th day of August, 1976.

BY Ronald F. Meyer
 Ronald F. Meyer
 Acting Ramsey County Surveyor