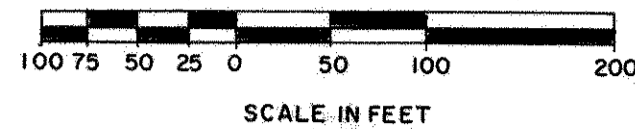


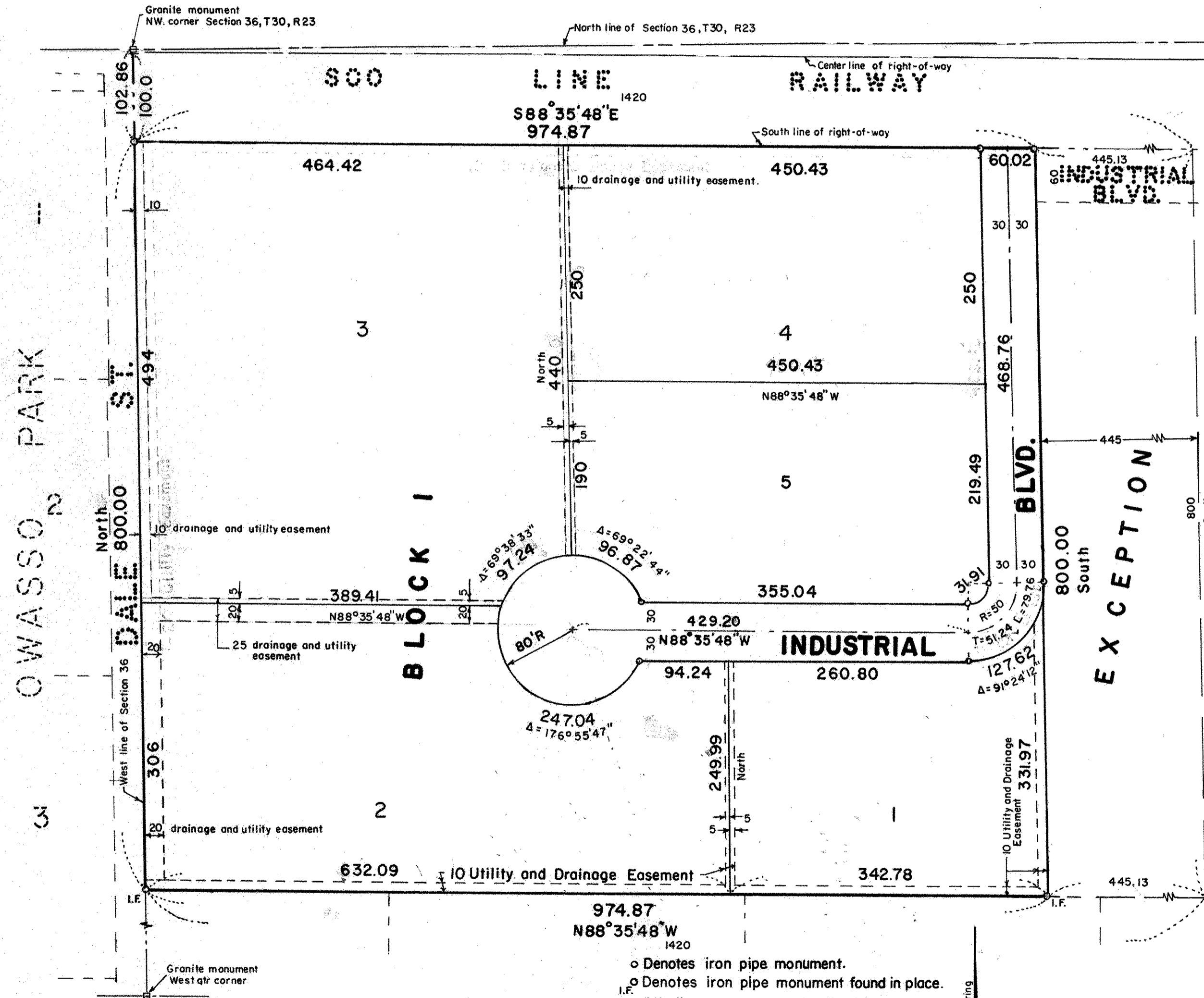
KROISS INDUSTRIAL PARK

SCALE: 1 inch = 100 feet



CITY OF SHOREVIEW
RAMSEY COUNTY, MINNESOTA

CHARLES O. GEORGI COMPANY
CIVIL ENGINEERING & LAND SURVEYING



o Denotes iron pipe monument.
o Denotes iron pipe monument found in place.
All distances are to hundredths of a foot, thus 190 denotes 190.00.
All distances on curves are arc lengths.
Bearings are on an assumed datum.

Know All Persons By These Presents that Raymond J. Kroiss and Mary Jean Kroiss, husband and wife, owners, and The Marquette National Bank of Minneapolis, a United States Corporation, mortgagee, of the following described property situated in City of Shoreview, Ramsey County, Minnesota:

All that part of the NW 1/4 of Section 36, T30N, R23W lying South of the Soo Line Railway described as follows: beginning at the Northwest corner of Section 36, T30N, R23W; thence South (assumed bearing) along the West line of said Section 36, a distance of 102.86 feet to the point of beginning; thence S88°35'48" E along the right-of-way line of said Soo Line Railway a distance of 1420 feet, thence South parallel to the West line of said Section 36 a distance of 800 feet, thence N88°35'48" W parallel to the South right-of-way line of the Soo Line Railway a distance of 1420 feet to the West line of said Section 36; thence North along the West line of said Section 36 a distance of 800 feet to the point of beginning, except the East 445 feet thereof (measured at right angles)

Have caused the same to be surveyed, platted and known as KROISS INDUSTRIAL PARK and do hereby dedicate to the public for public use forever the boulevard, utility and drainage easements as shown on the plat.

Have hereunto set our hands this 29th day of July, 1976

Raymond J. Kroiss
Raymond J. Kroiss
Mary Jean Kroiss
Mary Jean Kroiss

Have hereunto set our hands and seals this 28th day of July, 1976

Signed: The Marquette National Bank of Minneapolis, a United States Corporation.

E. Thomas Welch Vice Pres
Paul Kohler Vice Pres

I, Charles O. Georgi, hereby certify that I have surveyed and platted the property described in the dedication of this plat as KROISS INDUSTRIAL PARK; that this plat is a correct representation of said survey; that all distances are correctly shown on the plat; that all monuments have been correctly placed in the ground as shown; that the outside boundary lines are correctly designated on the plat; and there are no wet lands, easements or public highways other than as shown thereon.

Charles O. Georgi
Registered Land Surveyor
Minnesota Registration No. 3960

STATE OF MINNESOTA } S.S.
COUNTY OF RAMSEY }

The Surveyor's certificate was subscribed and sworn to before me, a Notary Public, this 28th day of July, 1976

Margaret Pohl
Notary Public, Ramsey County, Minnesota
My commission expires 6-7-77

Approved and accepted by the City Council of Shoreview Minnesota this 2nd day of August, 1976

James R. Olson Mayor
Larry L. Dickson Clerk

No delinquent taxes and transfer entered this 3rd day of August, 1976

Low McHenna Director
Department of Property Taxation

By *M. Stalcher* Deputy

Pursuant to Chapter 7, Minnesota Laws of 1976, this plat has been approved this 3rd day of July, 1976.

By *Ronald F. Meyer*
Ronald F. Meyer
Acting Ramsey County Surveyor

Register of Deeds, County of Ramsey, State of Minnesota
I hereby certify that this plat of KROISS INDUSTRIAL PARK was filed in this office this _____ day of _____, 1976 at _____ o'clock _____ M. and was filed in Book _____ of Plats, page _____ and that the copies were compared with the Official Plat and found to be true and correct copies thereof.

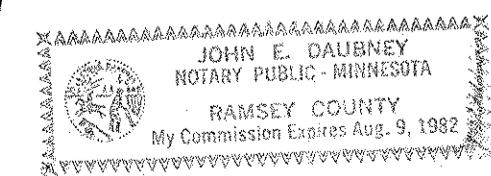
Robert T. Gibbons
Register of Deeds

By _____ Deputy

STATE OF MINNESOTA } S.S.
COUNTY OF RAMSEY }

The foregoing instrument was acknowledged before me this 29th day of July, 1976, by Raymond J. Kroiss and Mary Jean Kroiss, husband and wife.

John E. Daubney
Notary Public, Ramsey County, Minnesota
My Commission Expires 8-9-82



STATE OF MINNESOTA } S.S.
COUNTY OF RAMSEY }

The foregoing instrument was acknowledged before me this 28th day of July, 1976 by *E. Thomas Welch* its Vice President, and by *Edward Kohler* its Vice President of The Marquette National Bank of Minneapolis, a United States corporation, on behalf of the corporation.

Roseella A. Nelson
Notary Public, Ramsey County, Minnesota
My Commission Expires 8-27-82

