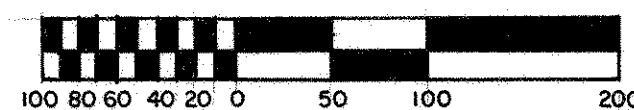
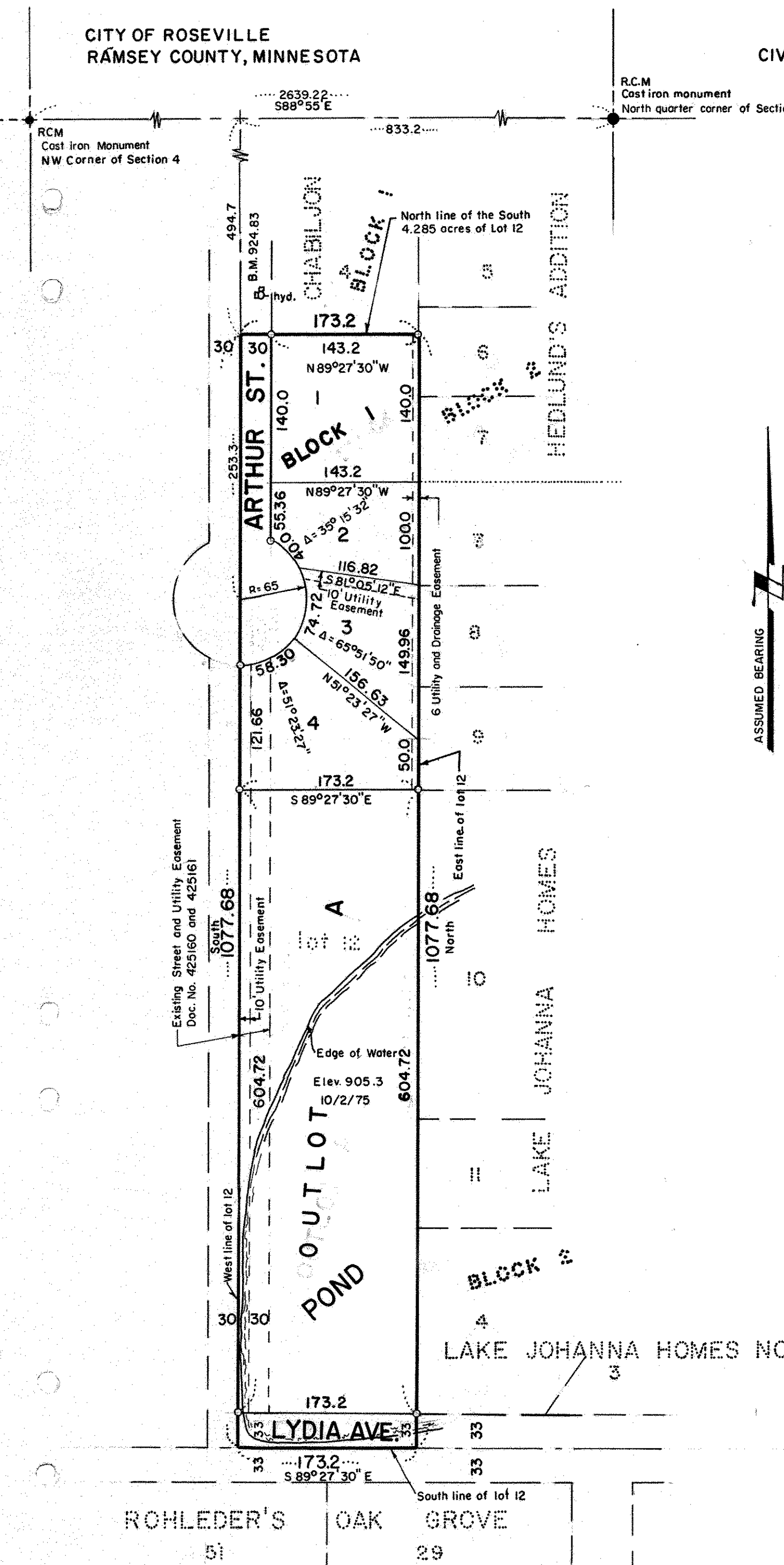


HALL EDGEWATER ESTATES



SCALE: 1 inch = 100 feet



CHARLES O. GEORGI, COMPANY
CIVIL ENGINEERING & LAND SURVEYING

R.C.M.
Cast iron monument
North quarter corner of Section 4, T 29, R 23

R.C.M.
Cast iron Monument
NW Corner of Section 4

ASSUMED BEARING

o Denotes iron pipe monument.
 All distances are to hundredths of a foot,
 thus 50.0 denotes 50.00 feet.
 All distances along curves are arc lengths.
 West line of Lot 12 is assumed as South bearing.
 B.M. = 924.83 top of hydrant 35 feet north of
 NW property corner

Know All Persons By These Presents that
 Lloyd N. Hall and Ida R. Hall, husband and wife, owners and
 Barry J. O'Meara and Pamela H. O'Meara, husband and wife, purchaser by
 contract for deed,

of the following described property situated in the City of Roseville,
 Ramsey County, Minnesota:

The South four and two hundred eighty-five thousandths
 (S.4.285) acres of Lot twelve (12), in Lake Johanna Homes
 according to the plat thereof filed of record in the office of
 the Registrar of Titles within and for said County.

Have caused the same to be surveyed, platted and known as HALL EDGE-
 WATER ESTATES and do hereby dedicate to the public for public use forever
 the street, avenue, utility and drainage easements as shown on the plat.

Have hereunto set our hands this 4th day of February, 1976.

Lloyd N. Hall
 Lloyd N. Hall

Ida R. Hall
 Ida R. Hall

Have hereunto set our hands this 2nd day of February, 1976.

Barry J. O'Meara
 Barry J. O'Meara

Pamela H. O'Meara
 Pamela H. O'Meara

I, Charles O. Georgi, hereby certify that I have surveyed and
 platted the property described in the dedication of this plat as
 HALL EDGEWATER ESTATES; that this plat is a correct
 representation of said survey; that all distances are correctly
 shown on the plat; that all monuments have been correctly placed
 in the ground as shown; that the outside boundary lines are
 correctly designated on the plat; and there are no wet lands,
 easements or public highways other than as shown thereon.

Charles O. Georgi
 Registered Land Surveyor No. 3960.

STATE OF MINNESOTA } S S
 COUNTY OF RAMSEY }

The Surveyor's certificate was subscribed and sworn to before me,
 a Notary Public, this 15th day of January, 1976.

O. M. Christen
 Notary Public, Ramsey County, Minnesota
 My commission expires Nov. 6, 1976

Approved and accepted by the city council of the City of Roseville,
 Minnesota, this 29th day of December, 1975.

R. Gale Lieberman Mayor
James J. Anderson Clerk

No delinquent taxes and transfer entered this 24th day of
March, 1976.

Lou McKenna Director
 Department of property taxation

By B. E. Southwick Deputy

Accepted and approved this 25th day of MARCH
 A.D. 1976.

Ronald F. Meyer
Norton A. Shurley
Richard L. Allred
 Plat Commission
 City Engineer of St. Paul

Registrar of Titles, County of Ramsey, State of Minnesota.

I hereby certify that this plat of HALL EDGEWATER ESTATES
 was filed in this office this day of
 19 at o'clock M. and was filed in Book of
 Plats, page and that the copies were compared with
 the Official Plat and found to be true and correct copies thereof.

Robert T. Gibbons, Registrar of Titles

By
 Deputy

STATE OF MINNESOTA } S S
 COUNTY OF RAMSEY }

The foregoing instrument was acknowledged before me this
2nd day of Feb, 1976 by Barry J. O'Meara
 and Pamela H. O'Meara, husband and wife.

O. M. Christen
 Notary Public, Ramsey County, Minnesota
 My commission expires Nov. 6, 1979

O. M. Christen
 Notary Public, Ramsey County, Minnesota
 My commission expires Nov. 6, 1979