

# BACCHUS ELMWOOD GARDEN



SCALE: 1 inch = 60 feet

I, Charles O. Georgi, hereby certify that I have surveyed and platted the property described in the dedication of this plat as BACCHUS ELMWOOD GARDEN; that this plat is a correct representation of said survey; that all distances are correctly shown on the plat; that all monuments have been correctly placed in the ground as shown; that the outside boundary lines are correctly designated on the plat; and there are no wet lands, easements or public highways other than as shown thereon.

*Charles O. Georgi*  
Registered Land Surveyor No. 3960

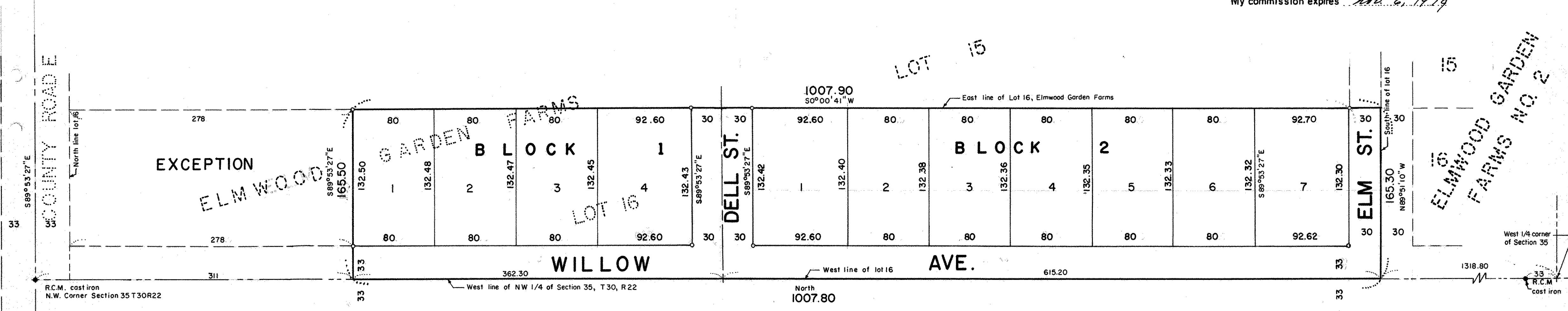
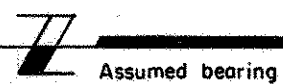
STATE OF MINNESOTA }  
COUNTY OF RAMSEY } S.S.

The Surveyor's certificate was subscribed and sworn to before me, a Notary Public, this 3rd day of December, 1975.

*C. M. Chuter*  
Notary Public, Ramsey County, Minnesota  
My commission expires Nov. 6, 1979

CITY OF WHITE BEAR LAKE  
RAMSEY COUNTY, MINNESOTA

CHARLES O. GEORGI COMPANY  
CIVIL ENGINEERING & LAND SURVEYING



Know all Persons By These Presents that:  
Kenneth W. Bacchus and Anita M. Bacchus, husband and wife,

Owners of the following described property situated in the City of White Bear Lake, Ramsey County, Minnesota:  
Lot 16, except the North 278.0 feet thereof, Elmwood Garden Farms, according to the recorded plat thereof on file and of record in the office of the Register of Deeds in and for said County and State.  
Have caused the same to be surveyed, platted and known as BACCHUS ELMWOOD GARDEN and do hereby dedicate to the public for public use forever the avenue and streets as shown on the plat.

o Denotes iron pipe monument.  
All distances are to hundredths of a foot, thus; 80 denotes 80.00 feet.  
West line of NW 1/4 of Section 35 is assumed as North-South bearing.

Have hereunto set our hands this 2<sup>nd</sup> day of FEBRUARY 1976.  
Signed: *Kenneth W. Bacchus*  
*Anita M. Bacchus*

STAT OF MINNESOTA }  
COUNTY OF RAMSEY } S.S.  
The foregoing instrument was acknowledged before me this 2<sup>nd</sup> day of FEBRUARY 1976 by Kenneth W. Bacchus and Anita M. Bacchus, husband and wife.

*Edward P. Ahlund*  
Notary Public, Ramsey County, Minn.  
My commission expires Nov. 6, 1980

Approved and accepted by the City Council of White Bear Lake, Minnesota, this 9<sup>th</sup> day of December, 1975.

*Dean Jenner* Mayor  
*Raymond A. Siskowak* Clerk

No delinquent taxes and transfer entered this 2nd day of February, 1976.

*Low McKeown* Director  
*John P. Hines* Deputy  
Department of Property Taxation

Accepted and approved this 3<sup>rd</sup> day of FEBRUARY, A.D., 1976.

*Ronald F. Meyer*  
*Walter A. Shultz*  
*Roger W. Lyman*  
*Richard L. Wheeler*  
Plat Commission  
City Engineer of St. Paul

Registrar of Titles, County of Ramsey, State of Minnesota I hereby certify that this plat of BACCHUS ELMWOOD GARDEN was filed in this office this 3<sup>rd</sup> day of FEBRUARY, 1976 at 10 o'clock AM and was filed in Book 202 of Plats, page 06 and that the copies were compared with the Official Plat and found to be true and correct copies thereof.

Robert T. Gibbons Registrar of Titles  
By \_\_\_\_\_ Deputy