

TOWNHOUSE VILLAGES NORTH 3RD ADDITION

KNOW ALL PERSONS BY THESE PRESENTS that Pentom, Inc., a Minnesota corporation, owner and The Pillsbury Company, a Delaware corporation, mortgagee, of the following described property situated in the City of Arden Hills, Ramsey County, Minnesota:

Outlot A, Townhouse Villages North 2nd Addition.

Have caused the same to be surveyed, platted and known as TOWNHOUSE VILLAGES NORTH 3RD ADDITION and do hereby dedicate to the public for public use forever the Drive together with a utility and drainage easement, only, over all of Lot 1, Block 9 and Lot 1, Block 10, as shown on this plat. In witness whereof said Pentom, Inc. has caused these presents to be signed by its proper officers and its corporate seal to be hereunto affixed this 17TH day of DECEMBER, 1975 and in witness whereof said The Pillsbury Company has caused these presents to be signed by its proper officers and its corporate seal to be hereunto affixed this 17TH day of DECEMBER, 1975.

Signed:

PENTOM, INC.

Bruce A. Thomson
Bruce A. Thomson, President

James R. Hill
James R. Hill, Vice-President

THE PILLSBURY COMPANY

William J. Powell
William J. Powell,
Senior Vice-President

Lynn E. Rhoads
Lynn E. Rhoads,
Assistant Secretary

STATE OF MINNESOTA The foregoing instrument was acknowledged before me this 17TH day of DECEMBER, 1975 by
COUNTY OF HENNEPIN Bruce A. Thomson, President and James R. Hill, Vice-President of Pentom, Inc. a Minnesota corporation, on behalf of the corporation.

Howard R. Kylo
Notary Public, Hennepin County, Minnesota
My Commission Expires _____
HOWARD R. KYLO
Notary Public, Hennepin County, Minn.
My Commission Expires Feb. 25, 1978.

STATE OF MINNESOTA The foregoing instrument was acknowledged before me this 17TH day of DECEMBER, 1975 by
COUNTY OF HENNEPIN William J. Powell, Senior Vice-President and Lynn E. Rhoads, Assistant Secretary of The Pillsbury Company a Delaware corporation, on behalf of the corporation.

Howard R. Kylo
Notary Public, Hennepin County, Minnesota
My Commission Expires _____
HOWARD R. KYLO
Notary Public, Hennepin County, Minn.
My Commission Expires Feb. 25, 1978.

I, E. A. Rathbun, hereby certify that I have surveyed and platted the property described in the dedication of this plat as TOWNHOUSE VILLAGES NORTH 3RD ADDITION; that this plat is a correct representation of said survey; that all distances are correctly shown on the plat; that all monuments have been correctly placed in the ground as shown; that the outside boundary lines are correctly designated on the plat; and that there are no wet lands, easements or public highways other than as shown thereon.

E. A. Rathbun
E. A. Rathbun, Land Surveyor
Minnesota Registration No. 3795

STATE OF MINNESOTA The foregoing instrument was acknowledged before me this 10th day of December, 1975 by
COUNTY OF ANOKA E. A. Rathbun, Land Surveyor.

Marietta L. Zuehlke
Notary Public, Anoka County, Minnesota
My Commission Expires _____
MARIETTA L. ZUEHLKE
Notary Public, Anoka County, Minn.
My Commission Expires April 29, 1977.

Approved and accepted by the City Council of Arden Hills, Ramsey County, Minnesota, this 22nd day of December, 1975.

CITY COUNCIL OF ARDEN HILLS, MINNESOTA
Charles W. Thies Mayor
Charlotte W. Thies Clerk

No delinquent taxes and transfer entered this 12th day of January, 1976.

Low MacKenna Director By B. Lucey Deputy
Department of Property Taxation

Accepted and approved this 12TH day of JANUARY, 1976.

Ronald F. Meyer Walter A. Shultz James W. Ryan
Plat Commission

Robert J. Allende
City Engineer of St. Paul

REGISTER OF DEEDS

REGISTRAR OF TITLES, COUNTY OF RAMSEY, STATE OF MINNESOTA

I hereby certify that this plat of TOWNHOUSE VILLAGES NORTH 3RD ADDITION was filed in this office this _____ day of _____, 19____ at _____ o'clock _____ M. and was filed in Book _____ of Plats, Page _____ and that the copies were compared with the Official Plat and found to be true and correct copies thereof.

By _____ Deputy
Robert T. Gibbons
Register of Deeds - Registrar of Titles

TOWNHOUSE VILLAGES NORTH 3RD ADDITION

TOWNHOUSE VILLAGES NORTH 2ND ADDITION also being the westerly line of Townhouse Villages North 1ST Addition

NORTH 1ST ADDITION

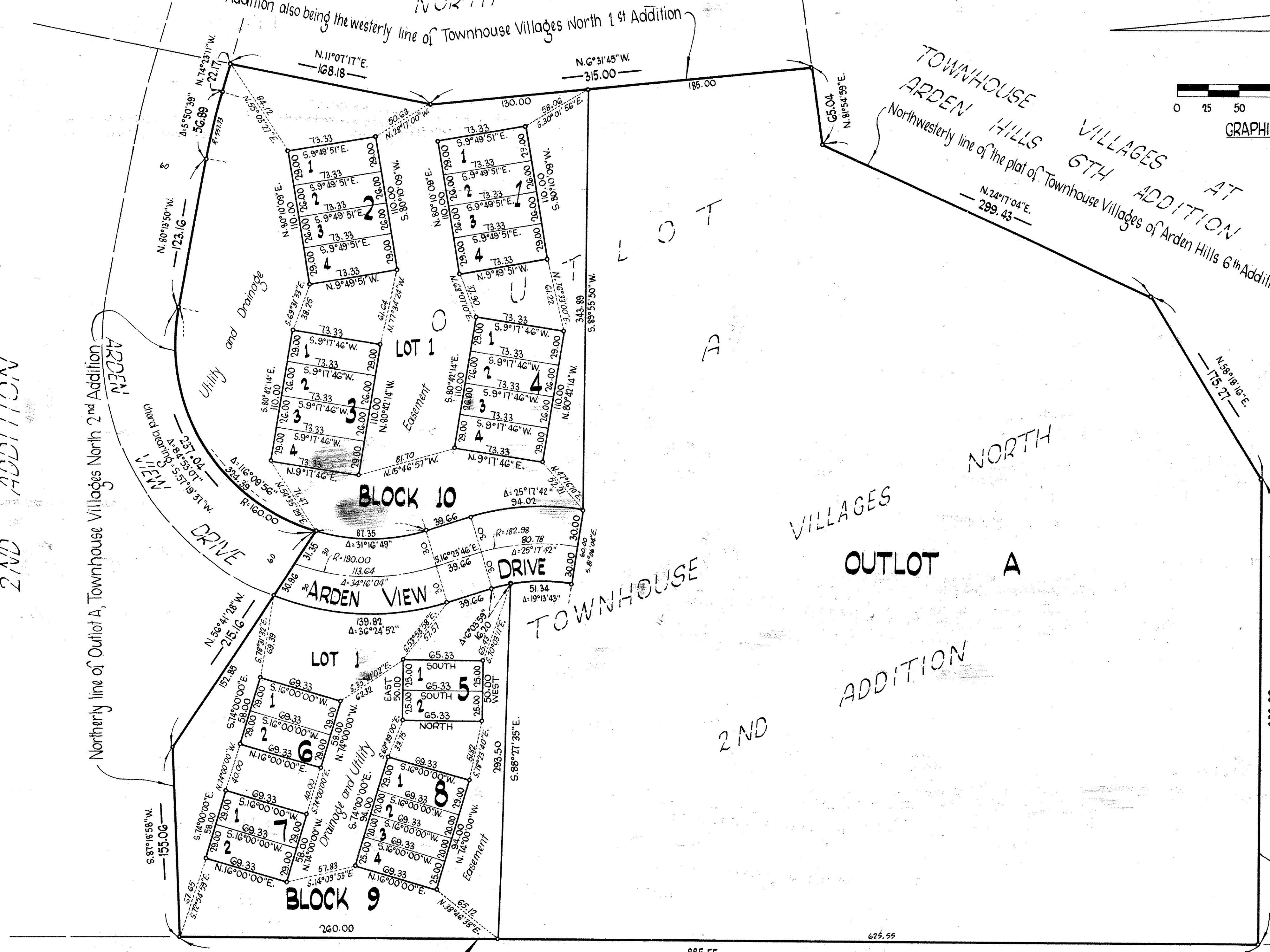
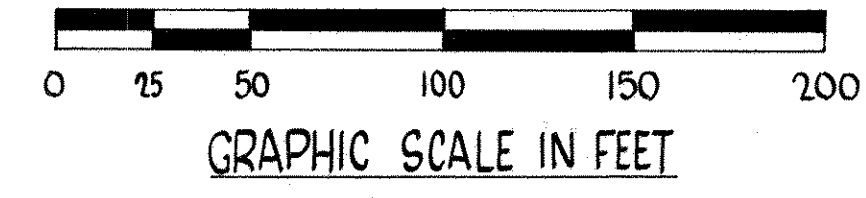
TOWNHOUSE HILLS VILLAGES ARDEN HILLS VILLAGES AT ADDITION
Northwesterly line of the plat of Townhouse Villages of Arden Hills 6TH Addition

TOWNHOUSE VILLAGES NORTH 2ND ADDITION

ARDEN HILLS VILLAGES AT ADDITION
Northernly line of Outlot A, Townhouse Villages North 2ND Addition

OCTOBER, 1975

Scale: 1 inch = 50 feet



Bearings shown are on an assumed datum

○ Denotes iron monument marked by Minnesota Registration No. 3795

UBURBAN ENGINEERING, INC.
—Engineers—
—Surveyors