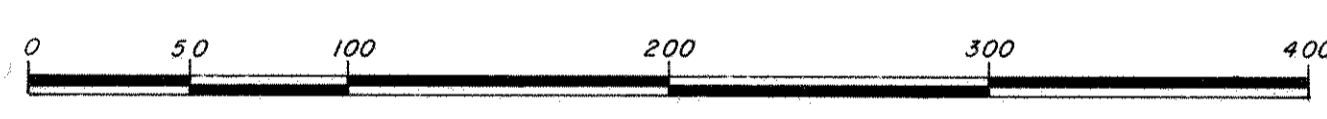
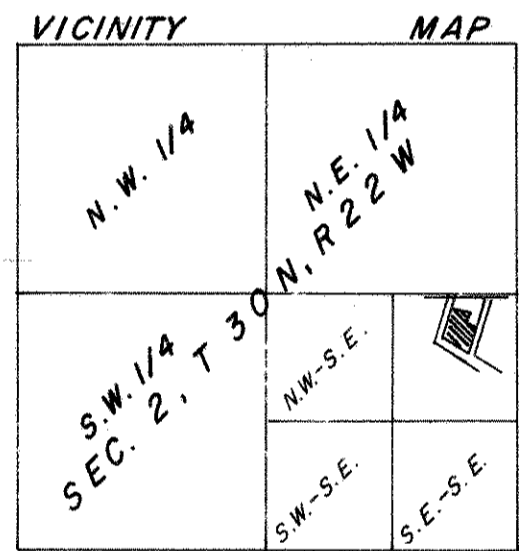
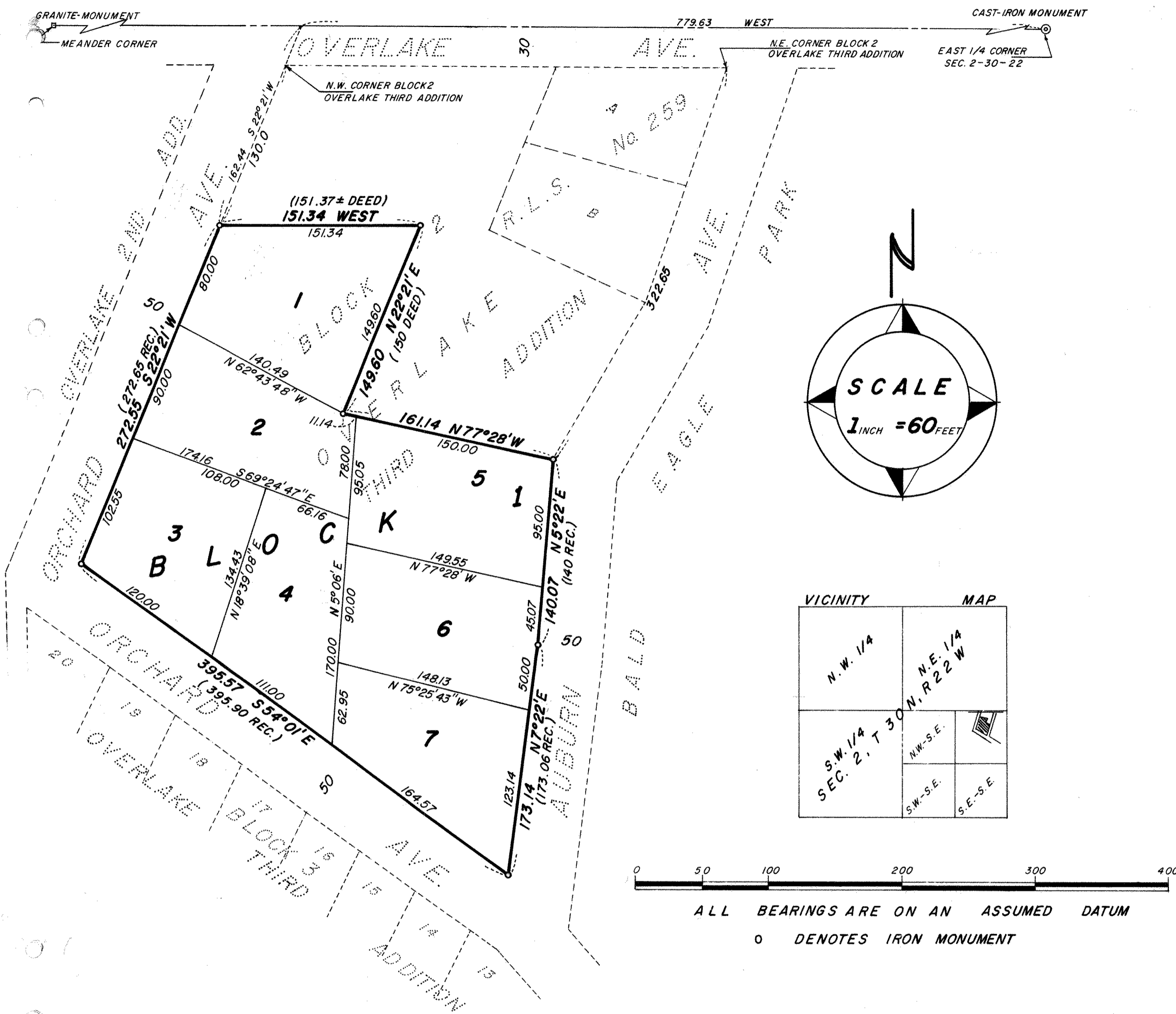


# OVERLAKE FOURTH ADDITION



ALL BEARINGS ARE ON AN ASSUMED DATUM  
 O DENOTES IRON MONUMENT

Known all persons by these presents that Briscoe & Luger Land Company, a partnership consisting of John B. Briscoe and John L. Luger, owner of the following described property situated in the Town of White Bear, Ramsey County, Minnesota.

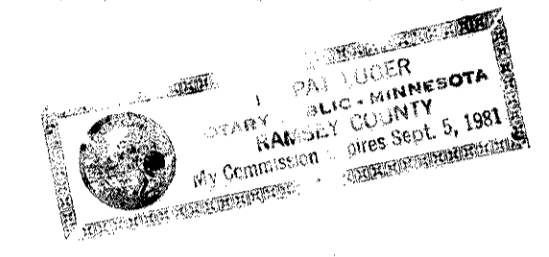
All that part of Block 2, Overlake Third Addition to Ramsey County, Minnesota, lying Southerly and Westerly of the following described line, Commencing at a point on the Easterly line of said Block, 322.65 feet from the Northeast corner of said Block measured along the Easterly line thereof; thence North 77 degrees 28 minutes West 161.14 feet; thence Northerly parallel with the West line of said Block, 150 feet; thence West parallel with the North line of said Block, 151.37 feet more or less to the West line of said Block at a point 130 feet from the Northwest corner of said Block.

Have caused the same to be surveyed, platted and known as OVERLAKE FOURTH ADDITION and have hereunto set our hands and seals this 15<sup>TH</sup> day of DEC., 1975.

Signed Briscoe & Luger Land Company, a partnership

By John B. Briscoe, a partner  
John L. Luger or John B. Briscoe

State of Minnesota )  
 County of RAMSEY The foregoing instrument was acknowledged before me this 15<sup>TH</sup> day of DEC., 1975  
 by JOHN B. BRISCOE, a partner on behalf of Briscoe & Luger Land Company, a partnership.



M. Pat Luger  
 Notary Public RAMSEY County, Minnesota  
 My Commission expires SEPT. 5, 1981

I, WARREN I. FORSBERG, hereby certify that I have surveyed and platted the property described in the dedication of this plat as OVERLAKE FOURTH ADDITION, that this plat is a correct representation of said survey; that all distances are correctly shown on the plat; that all monuments have been correctly placed in the ground as shown; that the outside boundary lines are correctly designated on the plat; and that there are no wet lands, easements or public highways other than as shown thereon.

Warren I. Forsberg  
 WARREN I. FORSBERG  
 Minnesota Registration Number: 4840

STATE OF MINNESOTA ) S.S.  
 COUNTY OF RAMSEY ) The Surveyor's certificate was subscribed and sworn to before  
 me, a Notary Public, this 15<sup>TH</sup> day of DEC., 1975.



M. Pat Luger Notary Public  
RAMSEY County, Minnesota  
 My Commission Expires SEPT 5, 1981

Approved and accepted by the town board of White Bear Town, Minnesota, this 15 day of December, 1975.

Jerome J. Persson  
 CHAIRMAN  
Maxie Rugh  
 CLERK

Accepted and approved this 23 day of DECEMBER A.D., 1975.

Ronald F. Meyer  
Raymond W. Rugh PLAT COMMISSION

Registrar of Titles, County of Ramsey, State of Minnesota

I hereby certify that this plat of OVERLAKE FOURTH ADDITION was filed in this office this \_\_\_\_\_ day of \_\_\_\_\_ 1975 at \_\_\_\_\_ o'clock \_\_\_\_\_ M., and was filed in Book \_\_\_\_\_ of Plats, Page \_\_\_\_\_ and that the copies were compared with the Official Plat and found to be true and correct copies thereof.

ROBERT T. GIBBONS  
 REGISTRAR OF TITLES

By \_\_\_\_\_ DEPUTY

Orlando J. Winkler City Engineer of St. Paul

No delinquent taxes and transfer entered this 22 day of December 1975.

Lou McKeena Director  
 Department of Property Taxation

By J. Mrozak DEPUTY

Torrens # 618748