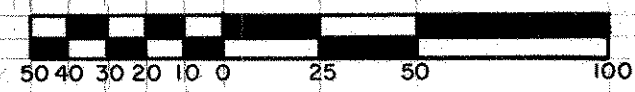


LAVERDIERE ROSELAWN ADDITION

SCALE: 1 inch = 50 feet



CITY OF ROSEVILLE
RAMSEY COUNTY, MINNESOTA

CHARLES O. GEORGI, COMPANY
CIVIL ENGINEERING & LAND SURVEYING

Know All Persons By These Presents that
Geremia Lametti and Speranza Lametti, husband and wife,
owners
Belair Builders Inc., a Minnesota corporation, purchaser by
contract for deed
of the following described property situated in the City of Roseville,
Ramsey County, Minnesota.

The West 262 feet of the South 1/2 of the SW 1/4 of the SW 1/4
of the NE 1/4 of Section 16, T29, R23, Ramsey County, Minnesota.
Subject to public road easements and subject to sewer
easement now of record

Have caused the same to be surveyed, platted and known as
LAVERDIERE ROSELAWN ADDITION, and do hereby dedicate to the
public for public use forever the avenues and utility easements as
shown on the plat.

Have hereunto set our hands this 16 day of Dec, 1975
Signed:

Geremia Lametti
Geremia Lametti
Speranza Lametti
Speranza Lametti

Have hereunto set our hands and seals this 16th day of DEC, 1975
Signed: Belair Builders Inc.

H. Musiolowski its VICE-PRESIDENT
H. Musiolowski its PRES.

I, Charles O. Georgi, hereby certify that I have surveyed and platted the
property described in the dedication of this plat as LAVERDIERE
ROSELAWN ADDITION; that this plat is a correct representation of said
survey; that all distances are correctly shown on the plat; that all
monuments have been correctly placed in the ground as shown; that
the outside boundary lines are correctly designated on the plat; and
there are no wet lands, easements or public highways other than as shown
thereon.

Charles O. Georgi
Registered Land Surveyor No 3960

STATE OF MINNESOTA } S.S.
COUNTY OF RAMSEY }

The Surveyor's certificate was subscribed and sworn to before me, a
Notary Public, this 15th day of December, 1975

P. M. Christen
Notary Public, Ramsey County, Minnesota
My Commission Expires Nov. 6, 1979

Approved and accepted by the City council of the City of Roseville
Minnesota, this 15 day of DECEMBER, 1975.

A. Gale Lindbarg Mayor
James J. Gude Clerk

No delinquent taxes and transfer entered this 18th day of
December, 1975.

Lou McKenna Director By *Sp. Oslund* Deputy
Department of Property Taxation

Accepted and approved this 22 day of December, A.D. 1975

Ronald F. Meyer
Walter A. Bentley } Plat Commission
Roger W. Ryan
Robert L. White City Engineer of St. Paul

Register of Deeds, County of Ramsey, State of Minnesota. I hereby
certify that this plat of LAVERDIERE ROSELAWN ADDITION was
filed in this office this 16 day of December, 1975
at 10 o'clock A.M. and was filed in Book 1924 of
Plats, page 149 and that the copies were compared with the
Official Plat and found to be true and correct copies thereof.

Robert T Gibbons, Register of Deeds

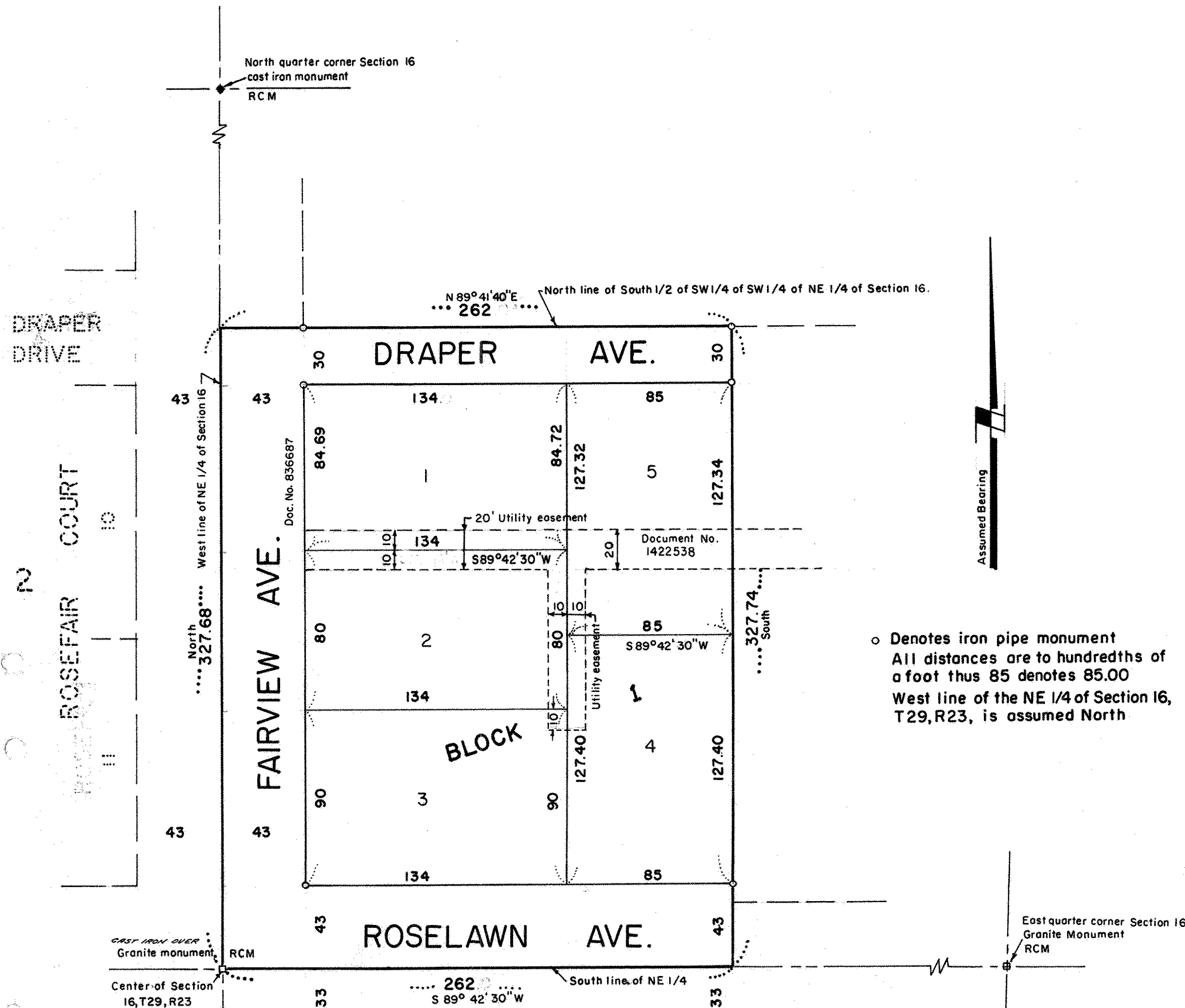
By _____
Deputy

STATE OF MINNESOTA } S.S.
COUNTY OF RAMSEY }

The foregoing instrument was acknowledged before me this 16 day
of December, 1975 by Geremia Lametti and Speranza
Lametti, husband and wife.

P. M. Christen
Notary Public, Ramsey County, Minnesota
My Commission Expires Nov. 6, 1979

P. M. Christen
Notary Public, Ramsey County, Minnesota
My Commission Expires Nov. 6, 1979



o Denotes iron pipe monument
All distances are to hundredths of
a foot thus 85 denotes 85.00
West line of the NE 1/4 of Section 16,
T29, R23, is assumed North

STATE OF MINNESOTA } S.S.
COUNTY OF RAMSEY }

The foregoing instrument was acknowledged before me this
16th day of December, 1975 by J. H. Musiolowski
and by H. Musiolowski of Belair Builders Inc. a Minnesota
corporation, on behalf of the corporation.