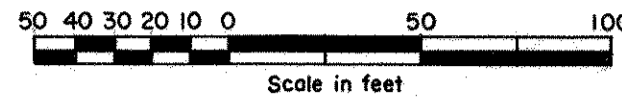


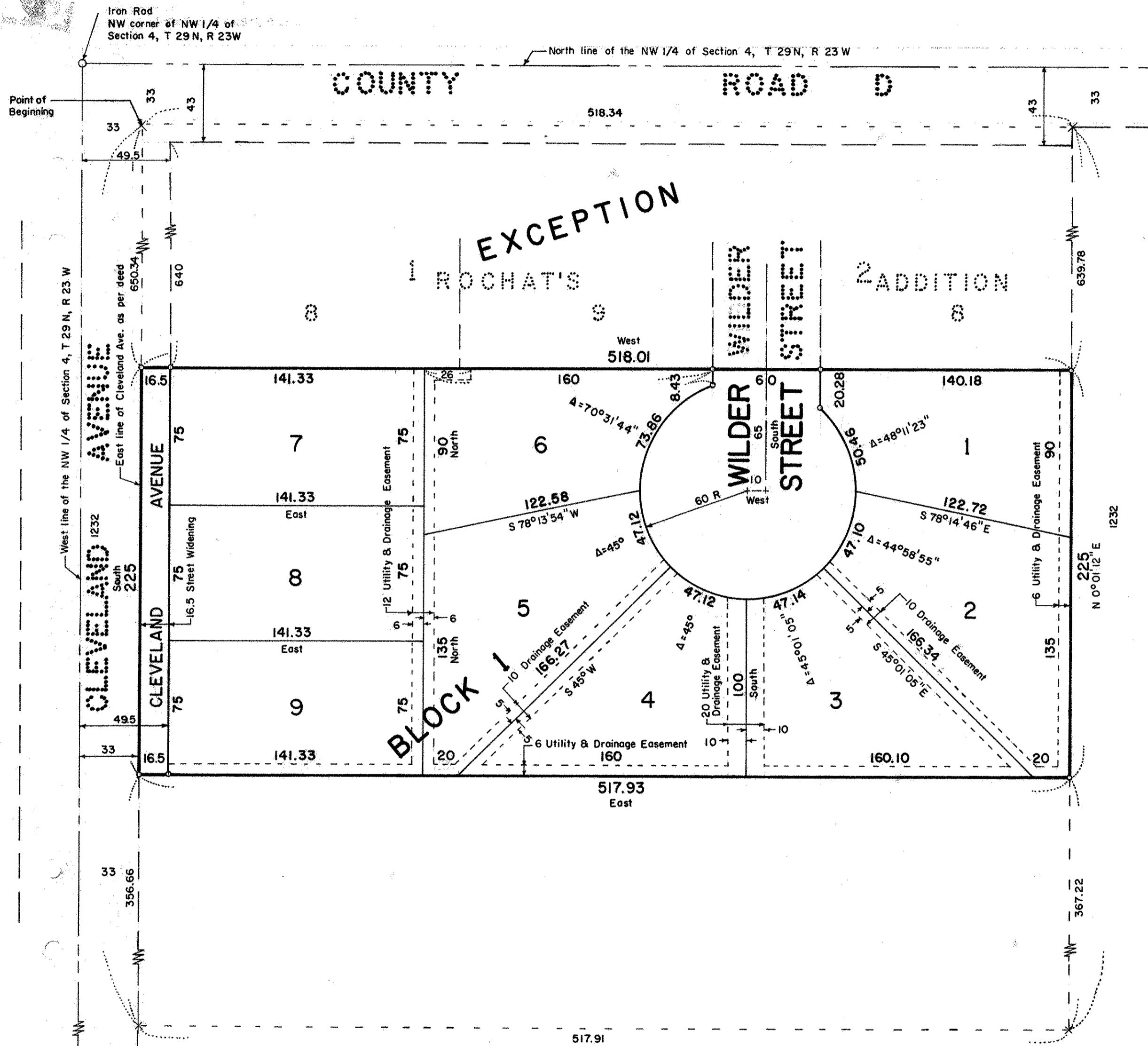
# WHITE OAK HILLS

SCALE: 1 inch = 50 feet



CITY OF ROSEVILLE  
RAMSEY COUNTY, MINNESOTA

CHARLES O. GEORGI COMPANY  
CIVIL ENGINEERING & LAND SURVEYING



West line of Section 4 is assumed North.  
 All distances are to hundredths of a foot, thus; 160 denotes 160.00 feet.  
 All distances on curves are arc lengths.  
 ○ Denotes iron pipe monument.  
 × Denotes iron post as per deed.

Know All Persons By These Presents that Raymond J. Kroiss and Mary Jean Kroiss, husband and wife, owners of the following described property situated in the City of Roseville, Ramsey County, Minnesota:

The North 225 feet of that part of the NW 1/4 of the NW 1/4 of Section 4, T 29N, R 23W, described as follows:  
 Commencing at an iron post 33 feet East and 33 feet South of the Northwest corner of the NW 1/4 of Section 4, thence South along the East line of Cleveland Ave. 1232 feet to an iron post, thence Easterly 517.91 feet to an iron post, thence Northerly 1232 feet to an iron post located 518.34 feet East of the place of beginning, thence West along the South line of County Road D to place of beginning, except part platted as Rochat's Addition, Ramsey County, Minn. Have caused the same to be surveyed, platted and known as WHITE OAK HILLS and do hereby dedicate to the public for public use forever the street, avenue and drainage and utility easements as shown on the plat.

Have hereunto set our hands and seals this 7th day of August, 1975.

Signed: *Raymond J. Kroiss*  
 Raymond J. Kroiss  
*Mary Jean Kroiss*  
 Mary Jean Kroiss

STATE OF MINNESOTA } SS  
 COUNTY OF RAMSEY }  
 The foregoing instrument was acknowledged before me this 7th day of August, 1975, by Raymond J. Kroiss and Mary Jean Kroiss, husband and wife.

*John E. Daubney*  
 Notary Public, Ramsey County, Minnesota  
 My Commission Expires Aug. 9, 1975.

I, Charles O. Georgi, hereby certify that I have surveyed and platted the property described in the dedication of this plat as WHITE OAK HILLS; that this plat is a correct representation of said survey; that all distances are correctly shown on the plat; that all monuments have been correctly placed in the ground as shown; that the outside boundary lines are correctly designated on the plat; and there are no wet lands, easements or public highways other than as shown thereon.

*Charles O. Georgi*  
 Registered Land Surveyor No. 3960

STATE OF MINNESOTA } SS  
 COUNTY OF RAMSEY }  
 The Surveyor's certificate was subscribed and sworn to before me, a Notary Public, this 10th day of August, 1975.

*C. M. Christie*  
 Notary Public, Ramsey County, Minnesota  
 My Commission Expires

Approved and accepted by the City Council of Roseville, Minnesota, this 5th day of August, 1975.

*R. Gale Luehman*  
 Mayor  
*James J. Bender*  
 Clerk

No delinquent taxes and transfer entered this 20th day of August, 1975.

*Lawrence McFerran*  
 Director  
 Department of Property Taxation  
 By *V. Hays*  
 Deputy

Register of Deeds, County of Ramsey, State of Minnesota, I hereby certify that this plat of WHITE OAK HILLS was filed in this office this day of August, 1975, at o'clock M. and was filed in Book of Plats, page and that the copies were compared with the Official Plat and found to be true and correct copies thereof.

Robert T. Gibbons, Register of Deeds  
 By Deputy

Accepted and approved this 22nd day of August, 1975.

*Ronald F. Meyer*  
*Walter A. Heitly*  
 Plat Commission

*Richard A. Whelan*  
 City Engineer of St. Paul