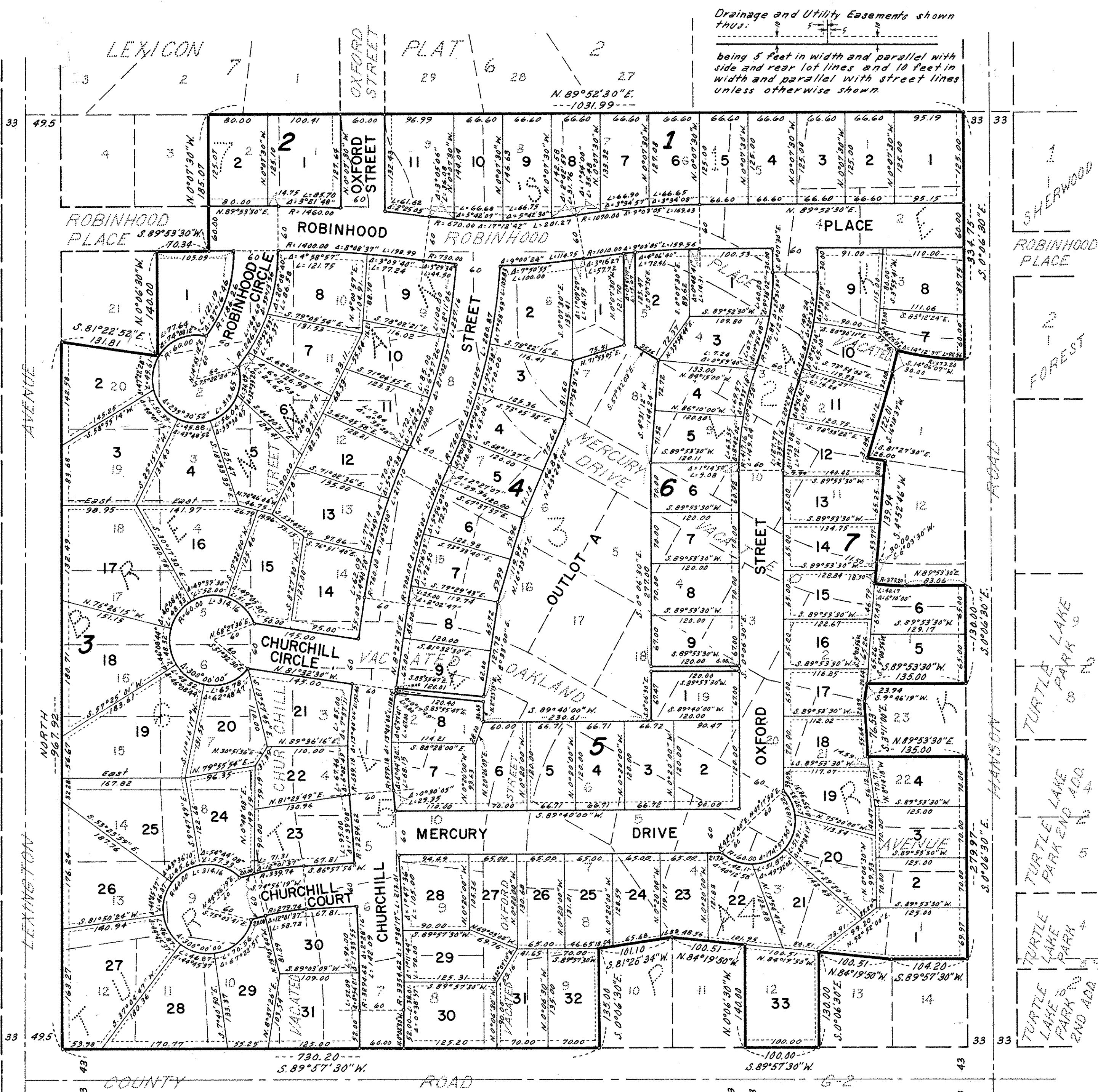


DIETRICH'S TURTLE LAKE HILL

BEARINGS SHOWN ARE ASSUMED DATUM
◦ DENOTES IRON MONUMENT
SCALE : 1 INCH = 100 FEET

SEPTEMBER, 1974

EGAN, FIELD & NOWAK, INC.
SURVEYORS



Drainage and Utility Easements shown thus: being 5 feet in width and parallel with side and rear lot lines and 10 feet in width and parallel with street lines unless otherwise shown.

Know All Persons By These Presents that Dietrich Company, a Minnesota Corporation, owner and proprietor and Schumacher Mortgage Company, Inc., a Delaware corporation, mortgagee, of the following described property situated in the City of Shoreview, Ramsey County, Minnesota: Lots 1 through 9, inclusive, Block 1, Lots 2 through 11, inclusive, Block 2, Lots 1 through 22, inclusive, Block 3, Lots 1, 2, 3, 4, 5, 6, 7, 8, 9, 12, Block 4, Lots 1 through 10, inclusive, Block 5, Lots 1 through 20, inclusive, Block 6, Lots 1 and 2, Block 7, all in Brennan's Turtle Lake Park. Also that part of vacated Robinhood Place, as platted in said addition lying between the Southerly extensions of the West line Lot 2, Block 7 in said addition and the East line of Block 1 in said addition, except that part of the Southerly half of said vacated Robinhood Place adjoining Lot 1, Block 2 in said addition. Also all of vacated Churchill Street, Oxford Street, Oakland Avenue and Mercury Drive as platted in said addition, except that part of the Northerly half of vacated Mercury Drive adjoining Lot 12, Block 2, in said addition, according to the plat thereof on file and of record in the Office of the Register of Deeds, Ramsey County, Minnesota. Have caused the same to be surveyed, platted and known as DIETRICH'S TURTLE LAKE HILL and do hereby dedicate to the public for public use forever the drive, circles, court, place, streets and easements for drainage and utility purposes as shown on the plat. In witness whereof said Dietrich Company has caused these presents to be signed by its proper officer this 4th day of APRIL A.D. 1975. In witness whereof said Schumacher Mortgage Company, Inc. has caused these presents to be signed by its proper officers and its corporate seal to be hereunto affixed this 4th day of APRIL A.D. 1975.

DIETRICH COMPANY
Duane H. Dietrich President
SCHUMACHER MORTGAGE COMPANY, INC.
Floyd Feikema vice president
William Trebilcock assistant treasurer

STATE OF MINNESOTA)
COUNTY OF HENNEPIN) The foregoing instrument was acknowledged before me this 4th day of April 1975 by Duane H. Dietrich, president of Dietrich Company, a Minnesota Corporation, on behalf of the corporation.

Debbie M. Shaw
Notary Public, Hennepin County, Minnesota.
My commission expires Jan 4, 1980

STATE OF MINNESOTA)
COUNTY OF HENNEPIN) The foregoing instrument was acknowledged before me this 4th day of April 1975 by Floyd Feikema, vice president and William Trebilcock, assistant treasurer of Schumacher Mortgage Company, Inc. a Delaware corporation, on behalf of the corporation.

Debbie M. Shaw
Notary Public, Hennepin County, Minnesota.
My commission expires Jan 4, 1980

I, Vernon A. Nickols, hereby certify that I have surveyed and platted the property described in the dedication of this plat as DIETRICH'S TURTLE LAKE HILL; that this plat is a correct representation of said survey; that all distances are correctly shown on the plat; that all monuments have been correctly placed in the ground as shown; that the outside boundary lines are correctly designated on the plat; and that there are no wet lands, easements or public highways other than as shown thereon.

Vernon A. Nickols
Surveyor - Minnesota Registration No. 9053

STATE OF MINNESOTA)
COUNTY OF HENNEPIN) The Surveyor's certificate was subscribed and sworn to before me, a Notary Public, this 27th day of March, 1975.

Chris Kuntz
CHRIS KUNTZ, Notary Public, Hennepin County, Minnesota
My commission expires March 4, 1982.

Approved and accepted by the City Council of the City of Shoreview, Minnesota, this 3rd day of March 1975.

Wm B. Farrell Mayor
Larry L. Schmal Clerk
CITY OF SHOREVIEW, MINNESOTA

No delinquent taxes and transfer entered this 9th day of April, 1975.

Law McKeown Director
Department of Property Taxation
By Dr. Kulecher Deputy

Accepted and approved this 24 day of APRIL A.D., 1975.

Walter A. Bentley
Ernest W. Ryan
Ronald F. Meyer
Richard J. Wulfsberg
Plat Commission
City Engineer of St. Paul

REGISTER OF DEEDS
REGISTRAR OF TITLES, County of Ramsey, State of Minnesota

I hereby certify that this plat of DIETRICH'S TURTLE LAKE HILL was filed in this office this ___ day 1975 at ___ o'clock ___ M. and was filed in book ___ of plats, page ___ and that the copy compared with the official plat and found to be true and correct copies thereof.

Robert T. Gibbons
Register of Deeds Registrar of Titles

by _____
Deputy

Abstract # 1906087