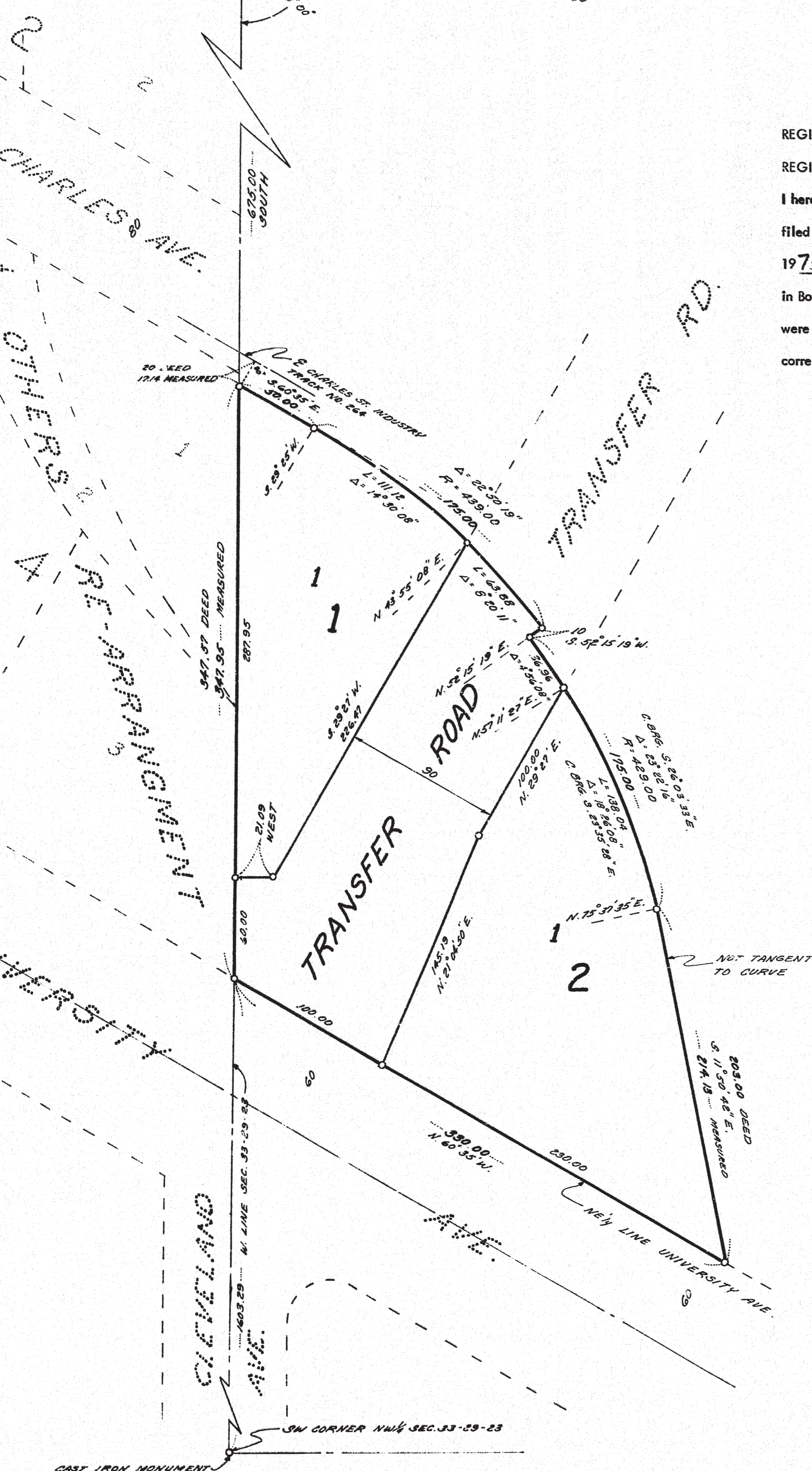


TRANSFER ROAD ADDITION

1904585

CAST IRON MONUMENT
OVER GRANITE MONUMENT

NW CORNER NW 1/4, NW 1/4 SEC. 33-29-23
N. LINE SEC. 33-29-23



REGISTER OF DEEDS

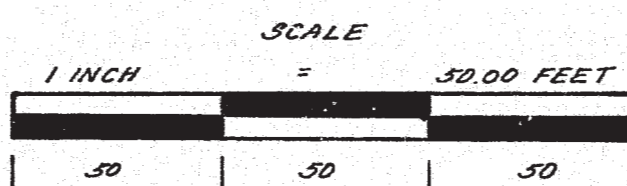
REGISTRAR OF TITLES, COUNTY OF RAMSEY, STATE OF MINNESOTA.

I hereby certify that this Plat of TRANSFER ROAD ADDITION was filed in this office this 3RD day of APRIL 1975 at 9:00 O'Clock A. M. and was filed in Book 86 of Plats, Page 22 and that the copies were compared with the Official Plat and found to be true and correct copies thereof.

ROBERT T. GIBBONS
REGISTER OF DEEDS REGISTRAR OF TITLES
BY Engage H. Gibbons
DEPUTY

This plat document is an UNOFFICIAL copy of a Subdivision Plat or Registered Land Survey and is made available for information purposes only.

To obtain an official copy please contact the Ramsey County Recorder's Office.



BEARINGS ARE ON AN ASSUMED DATUM
O DENOTES IRON MONUMENT

NOTE:
DEED REFERS TO DOC. #1085466

This plat of TRANSFER ROAD ADDITION was accepted and approved this 2 day of APRIL, 1975, A.D.

Merton A. Shetley
Ronald F. Meyer
Raymond W. Ryan
Richard J. Wulfsberg
Plat Commission
City Engineer of Saint Paul

Know All Persons By These Presents: that the Housing and Redevelopment Authority of the City of Saint Paul, Minnesota, a Minnesota Corporation, owner and proprietor of the following described property situated in the City of Saint Paul, Ramsey County, Minnesota:

Commencing at a point on the W. line of the NW-1/4 of NW-1/4 of Sec. 33, T. 29 N.R. 23 W. Saint Paul, Ramsey County, Minnesota, 675 feet S. of the NW corner thereof; said point of beginning being 20 feet SW'ly of, measured at right angles to the center line of the main Charles Street Industry Track No. 264 of the Minnesota Transfer Railway Company, as now laid and operated; thence SE'ly parallel to the SW'ly line of Charles St. extended SE'ly 50 feet; thence SE'ly on a curve with a radius of 439 feet, 175 feet; thence SW'ly on a radial line, 10 feet; thence SE'ly on a curve with a radius of 429 feet, 175 feet; thence SE'ly on a straight line 203 feet to a point on the NE'ly line of University Ave. which is 330 feet SE'ly of the W. line of said Sec. 33; thence NW'ly on said street line, 330 feet to said W. line of Sec. 33; thence N. on said W. line 347.57 feet to the place of beginning.

Have caused the same to be surveyed, platted and known as TRANSFER ROAD ADDITION and do hereby dedicate to the public for public use forever the road as shown on the plat. Have hereunto set our hands and seals this 26th day of MARCH, 1975 A.D.

HOUSING AND REDEVELOPMENT AUTHORITY OF THE CITY OF SAINT PAUL, MINNESOTA

Orville E. Anderson Chairman
David H. Hozza Secretary

STATE OF MINNESOTA }
COUNTY OF Ramsey } ss
On this 26th day of MARCH, 1975, A.D. before me, a Notary Public within and for said County and State, personally appeared Orville E. Anderson and David H. Hozza and who being by me duly sworn, did say that they are respectively the Chairman and Secretary of the Housing and Redevelopment Authority of the City of Saint Paul, Minnesota, the corporation named in the foregoing instrument and that seal affixed to the said instrument is the corporate seal of said corporation and that said instrument was signed and sealed in behalf of said corporation by authority of its Board of Commissioners and said Orville E. Anderson and David H. Hozza acknowledged said instrument to be the free act and deed of said corporation.

Kathryn Melby
Notary Public, Ramsey County, Minnesota
My Commission Expires 6-11-77

I, Donald E. Erster, hereby certify that I have surveyed and platted the property described in the dedication of this plat as TRANSFER ROAD ADDITION: that this plat is a correct representation of said survey; that all distances are correctly shown on plat in feet and hundredths of a foot; that all monuments have been correctly placed in the ground as shown; that the outside boundary lines are correctly designated on the plat; and that there are no wet lands, easements or public highways other than as shown thereon.

Donald E. Erster
Minnesota Registration No. 6598

STATE OF MINNESOTA }
COUNTY OF Ramsey } ss
The surveyor's certificate was subscribed and sworn to before me, a Notary Public, this 26th day of MARCH, 1975, A.D.

Kenneth C. Newcomb
Notary Public, Ramsey County, Minnesota
My Commission Expires Aug. 4, 1976

This plat of TRANSFER ROAD ADDITION was approved and accepted by the City Council of Saint Paul, Minnesota, this 25TH day of MARCH, 1975, A.D.

Rose Mich
Clerk
No delinquent taxes and transfer entered this 21st day of MARCH, 1975, A.D.
Law McKenna Director
Department of Property Taxation BY: Raymond Deputy

I hereby certify that this plat is entitled to filing or recordation without payment of fees. Pursuant to Laws, 1967, Chapter 124. It being for the benefit of City of St. Paul.
BY Rose Mich
City Clerk
TITLE

22