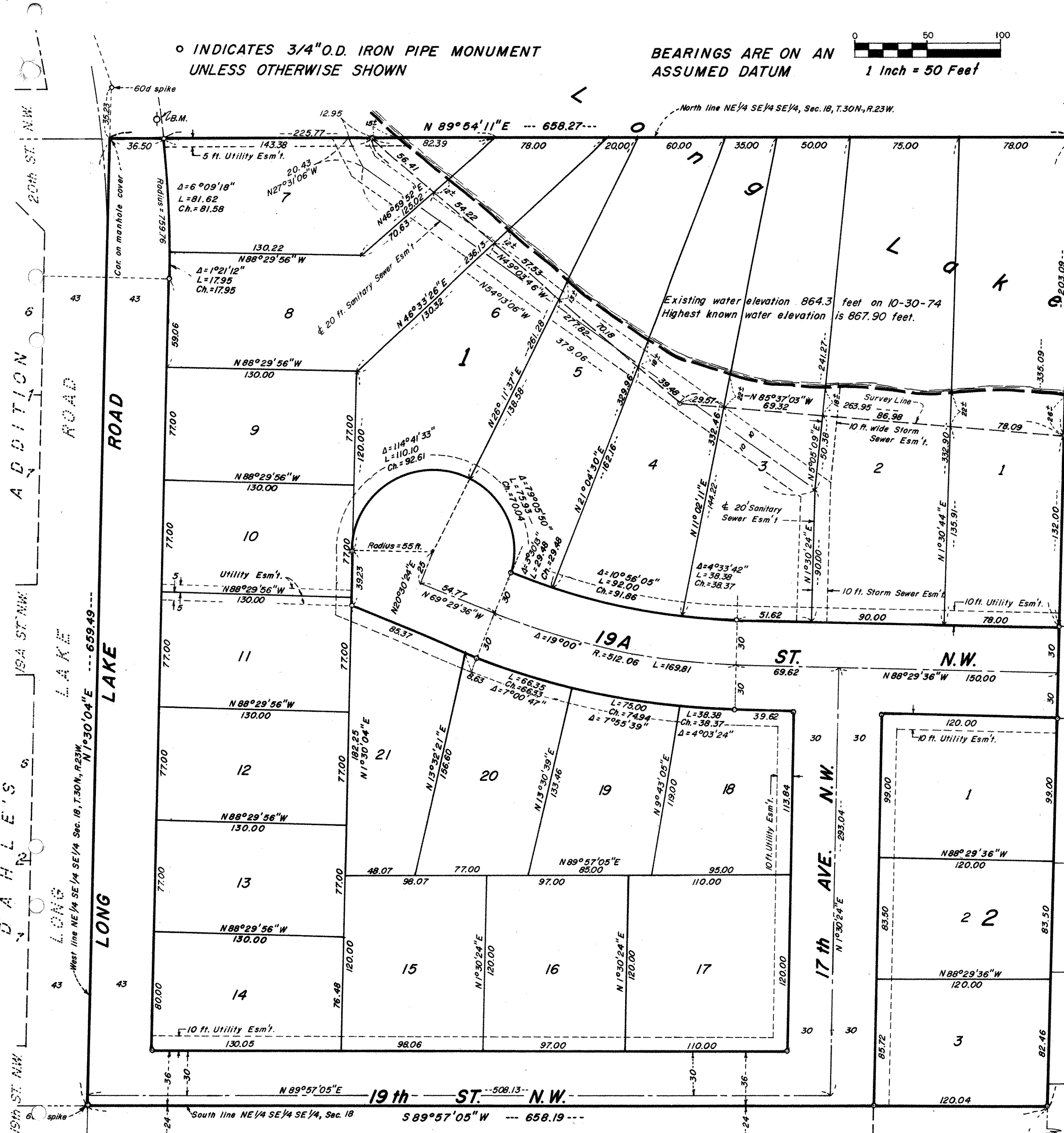
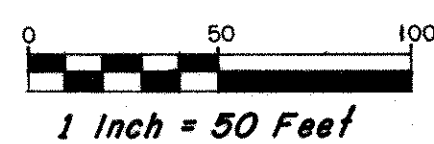


LONG LAKE ESTATES

o INDICATES 3/4" O.D. IRON PIPE MONUMENT UNLESS OTHERWISE SHOWN

BEARINGS ARE ON AN ASSUMED DATUM



Know All Persons By These Presents that Cobb, Inc., a Minnesota corporation and Thunder Corporation, a Minnesota corporation, owners of the following described property situated in the City of New Brighton, Ramsey County, Minnesota:

The Northeast Quarter of the Southeast Quarter of Section 18, Township 30 North, Range 23 West, Ramsey County, Minnesota, subject to Long Lake Road.

Have caused the same to be surveyed, platted and known as LONG LAKE ESTATES and do hereby dedicate to the public for public use forever the streets, avenue, road, sanitary sewer easement, storm sewer easement and utility easements as shown.

Have hereunto set our hands and seals this 28th day of JANUARY, 1975.

Cobb, Inc. BY James P. Cobb its President
Thunder Corporation BY Karl L. McLaughlin its President
BY Dorothy Cobb its Vice President BY Vivian J. McLaughlin Secretary

STATE OF MINNESOTA } ss The foregoing instrument was acknowledged before me this 28th day of
COUNTY OF RAMSEY } 1975, by James P. Cobb, President and by Dorothy Cobb, Vice President, of
JANUARY } Cobb, Inc., a Minnesota corporation, on behalf of the corporation.

L. Wayne Dupst
Notary Public, WASHINGTON County, Minnesota
My Commission Expires MARCH 26, 1981

STATE OF MINNESOTA } ss The foregoing instrument was acknowledged before me this 28th day of
COUNTY OF RAMSEY } 1975, by Karl L. McLaughlin, President and by Vivian J. McLaughlin,
JANUARY } Secretary of Thunder Corporation, a Minnesota corporation, on behalf of the corporation.

L. Wayne Dupst
Notary Public, WASHINGTON County, Minnesota
My Commission Expires MARCH 26, 1981

I, Donald O. Carley, hereby certify that I have surveyed and platted the property described in the dedication of this plat as LONG LAKE ESTATES; that this plat is a correct representation of said survey; that all distances are correctly shown on the plat; that all monuments have been correctly placed in the ground as shown; that the outside boundary lines are correctly designated on the plat; that there are no wet lands, easements or public highways other than as shown thereon.

Donald O. Carley
Donald O. Carley, Minn. Registration No. 3527

STATE OF MINNESOTA } ss The Surveyor's Certificate was subscribed and sworn to before me, a
COUNTY OF RAMSEY } Notary Public, this 28th day of JANUARY, 1975.

L. Wayne Dupst
L. Wayne Dupst, Notary Public
Washington County, Minnesota
My Commission Expires March 26, 1981

Approved and accepted by the City of New Brighton, Minnesota this 14th day of JANUARY, 1975

Vernon C. Pedersen
Clerk

No delinquent taxes and transfer entered this 13th day of FEBRUARY, 1975.
Low McKenna Director By Donal Deputy
Department of Property Taxation

Accepted and approved this 24th day of FEBRUARY, 1975.

Ronald F. Meyer
Walter A. Shethy Plat Commission
Richard L. Ullrich City Engineer of St. Paul

Benchmark: Galv. bridge spike in PP east of int. of Long Lake Road and 20th St. is 885.30, Mean Sea Level datum.



Abstract #4902408
RECORDED FEB. 24, 1975