

This plat document is an UNOFFICIAL copy of a Subdivision Plat or Registered Land Survey and is made available for information purposes only. To obtain an official copy please contact the Ramsey County Recorder's Office.

Office of Registrar of Deeds
County of Ramsey

I hereby certify that this map was filed in this office for record on the 21st day of January A.D. 1876 at 12^o o'clock P.M. and was duly recorded in Book No. 11 of Plate Page 16.

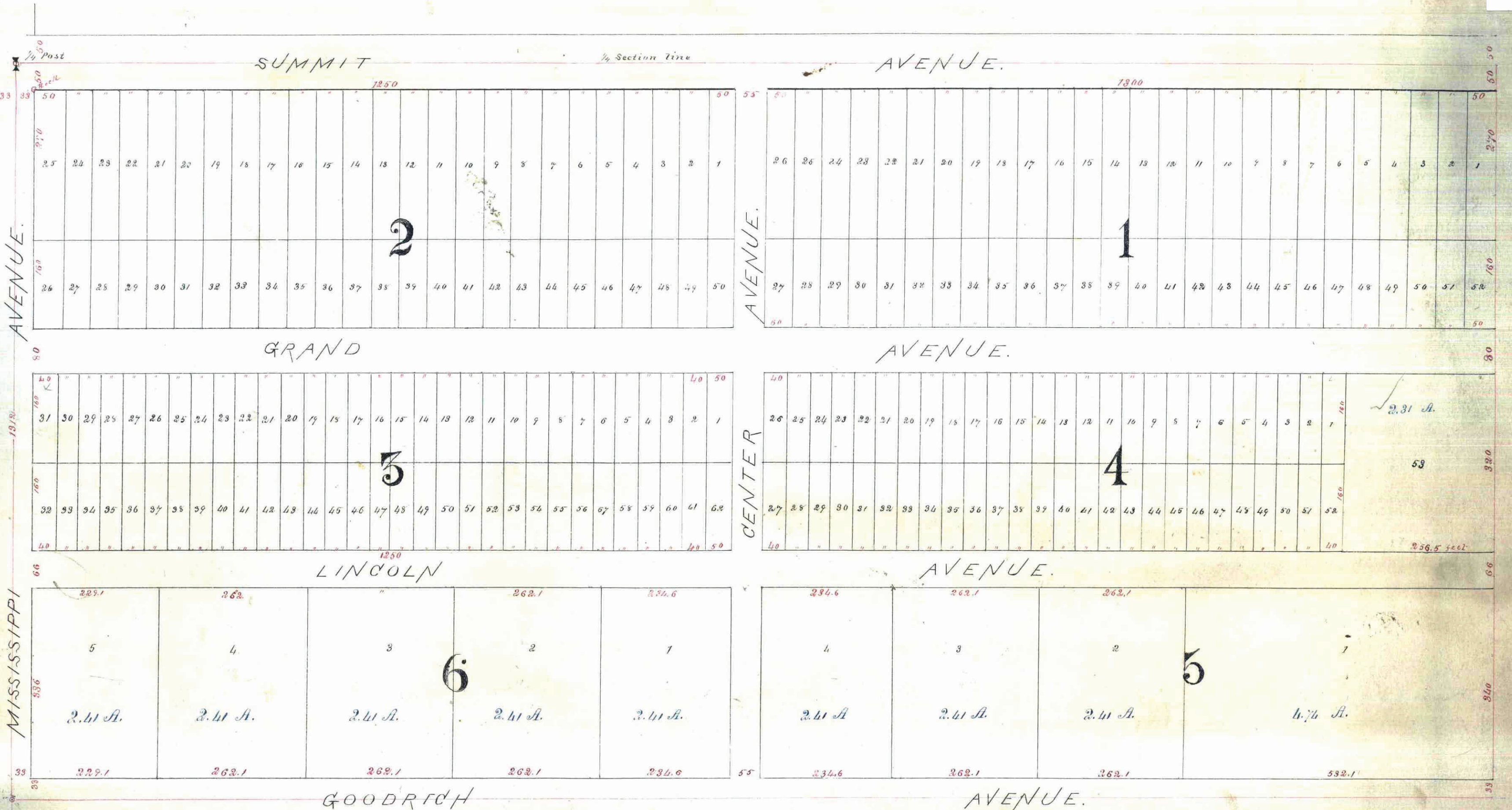
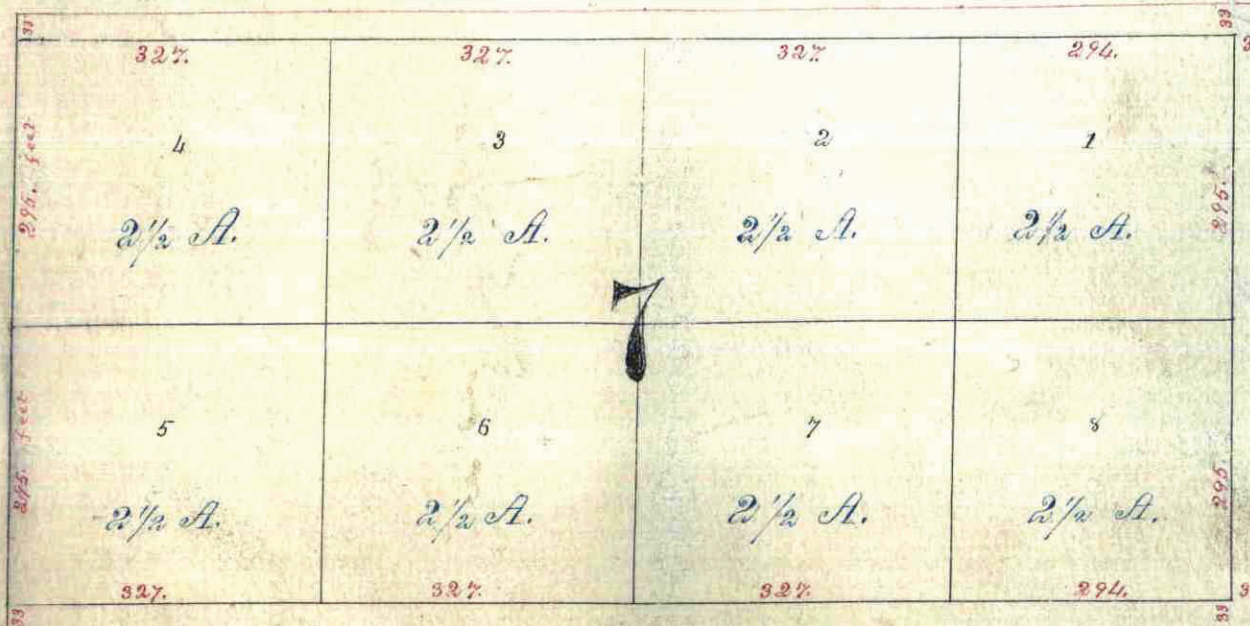
Alex Johnston
Registrar of Deeds.

MAP OF ROSEDALE PARK.

N 1/2 of SW 1/4 of SECTION 4, T.28, R.23.
AND
S 1/2 of SE 1/4 of SE 1/4 of SECTION 5, T.28, R.23.
Surveyed by C.M. Boyle, 1875.
Scale. 150 ft. to one inch.

I hereby certify that this is a court plot of Rosedale Park, being the north half of the south west quarter of section four of Town Seventy Eight Range Twenty three (N 1/2 of S.W. 1/4 of Sec. 4 T.28 R.23) and the south half of the south east quarter of the south east quarter of section five of Town Twenty Eight Range twenty three (S 1/2 of S.E. 1/4 of S.E. 1/4 of Section 5 T.28 R.23) as surveyed by me.

Dated Saint Paul December 10th A. D. 1875
Chas. M. Boyle
County Surveyor



State of Minnesota } S.S. The Catholic Industrial School of Minnesota
County of Ramsey } We the undersigned Thomas L. Grace as President and
Dennis O. Halloran as Secretary of said Catholic Industrial school of Minnesota
proprietor of the plot of Rosedale Park described as follows to wit:
Being the north half of the south west quarter of section four Town twenty
Eight Range twenty three (N 1/2 of S.W. 1/4 of Sec. 4 T.28 R.23) and the south half of the
south east quarter of the south east quarter of section five Town twenty eight Range
twenty three (S 1/2 of S.E. 1/4 of S.E. 1/4 of Sec. 5 T.28 R.23) Do hereby certify that we have
caused the same to be surveyed and plotted as per accompanying diagram and
we hereby give the streets for public use. In testimony whereof The Catholic
Industrial School of Minnesota has hereunto set its name and corporate seal and caused these
present to be signed by its President and Secretary This 11th day of December A.D. 1875
In presence of }
Henry Elgorn and }
J. Verrois }
Witness



The Catholic Industrial School of Minnesota Seal
Thomas L. Grace President Seal
Dennis O. Halloran Secretary Seal

State of Minnesota }
County of Ramsey } On this 11th day of December A.D.
1875 before the undersigned a Notary Public within and for said County
and State personally appeared Rt. Rev. Thomas L. Grace President
and Dennis O. Halloran Secretary of The Catholic Industrial
School of Minnesota to me well known as the same persons
who signed the foregoing dedication and certificate and they
acknowledged that they executed the same as their act and deed
as well as the act and deeds of said The Catholic Industrial
School of Minnesota. Witness my hand and Notarial Seal

Henry Elgorn
Notary Public
Ramsey Co. Minn.

State of Minnesota }
County of Ramsey }
John Davis
Creditor
Present