

ROGERS

addition to ST PAUL.

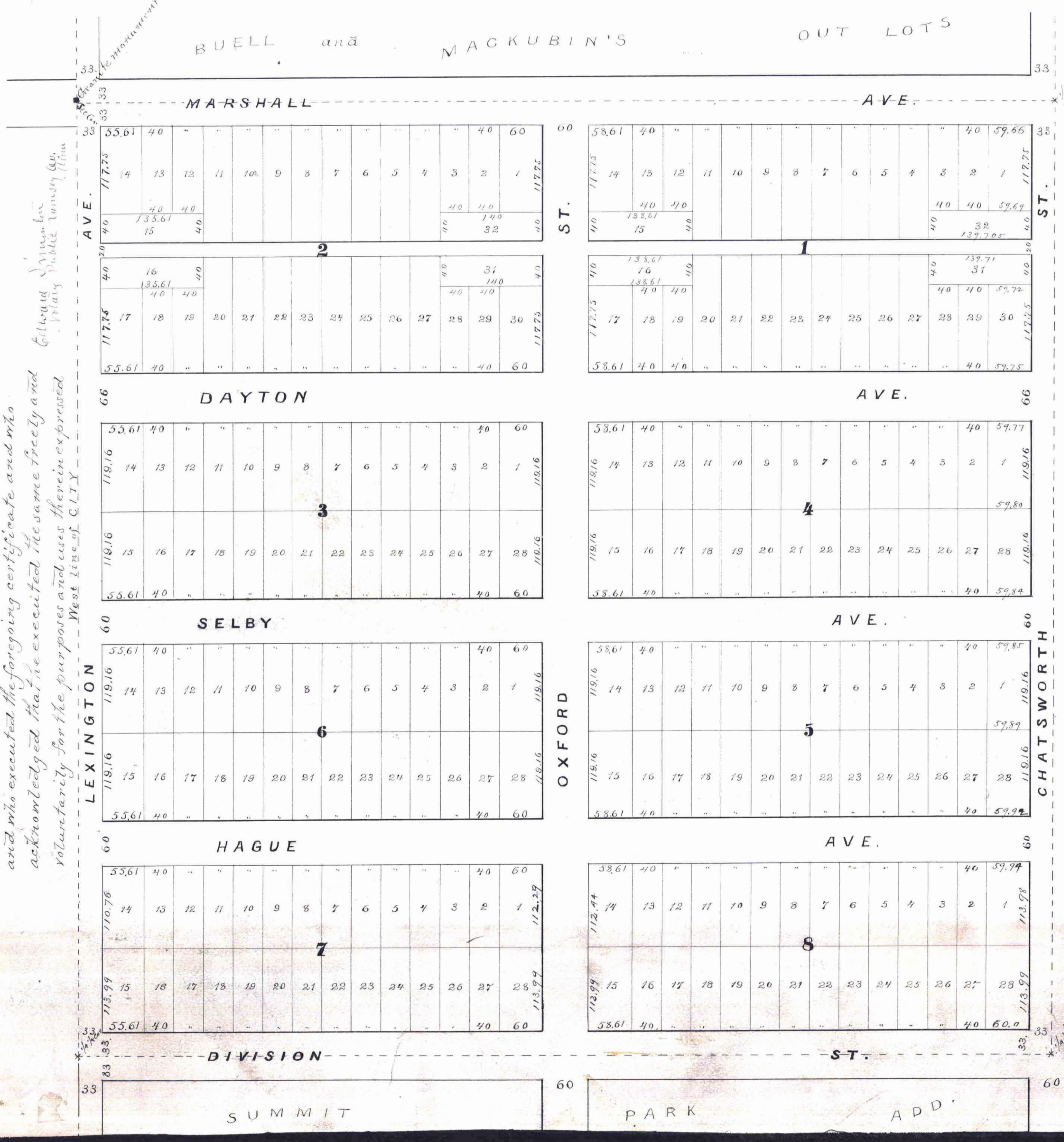
This plat document is an UNOFFICIAL copy of a Subdivision Plat or Registered Land Survey and is made available for information purposes only.

To obtain an official copy please contact the Ramsey County Recorder's Office.

STATE OF MINNESOTA
County of Ramsey
OFFICE OF THE REGISTER OF DEEDS
This is to certify that the within instrument was filed for Record in this office, at St. Paul, on the 21 day of July, A. D. 1882 at 3 o'clock P. M., and that the same was duly recorded in Book 6 of Town Plat pages 26.

St Paul Minn July 15th 1882
I certify that this diagram correctly represents Rogers Addition to St Paul as surveyed by me in the month of July AD 1882 and that said Addition embraces the NW 1/4 of the NW 1/4 of Section 2, Town 28 North, Range 23 West and that a Granite monument has been set 0.26 feet north from the Section Corner at the NW corner of said Addition.

State of Minnesota }
County of Ramsey }
Be it known, That on this seventeenth day of July 1882 before me personally came David L. Currier to me known to be the individual person described in and who executed the foregoing certificate and who acknowledged that he executed the same freely and voluntarily for the purposes and uses therein expressed Messrs. J. H. LITZ



St Paul Minn July 17th 1882
We Edward G. Rogers and Mary M. Rogers his wife hereby certify that we are the owners of the NW 1/4 of the NW 1/4 of Section 2, Town 28 N Range 23 W and that we have caused the same to be surveyed and platted as 'Rogers Addition to St Paul' and we hereby donate for public use the streets and alleys herein indicated.

Edward G. Rogers
Mary M. Rogers
Witness

Be it known, That on this seventeenth day of July 1882 before me personally came Edward G. Rogers and Mary M. Rogers his wife to me known to be the individual persons who executed the foregoing instrument and who acknowledged that they executed the same freely and voluntarily for the uses and purposes therein expressed.

City Treasurers' Office,
ST. PAUL, MINN.
JUL 20 1882
ASSESSMENT PAID,
George Reilly Cash.

Approved July 17th 1882
S. P. Tolson
Wm. Dransayer
James Starkey. } PLAT COMMISSION

Examined & approved
L. W. Russell
City Engineer
July 28th 82
Accepted by Council
August July 18 1882

Scale 100 ft = 1 inch

Edw. G. Rogers
Mary M. Rogers
Witness