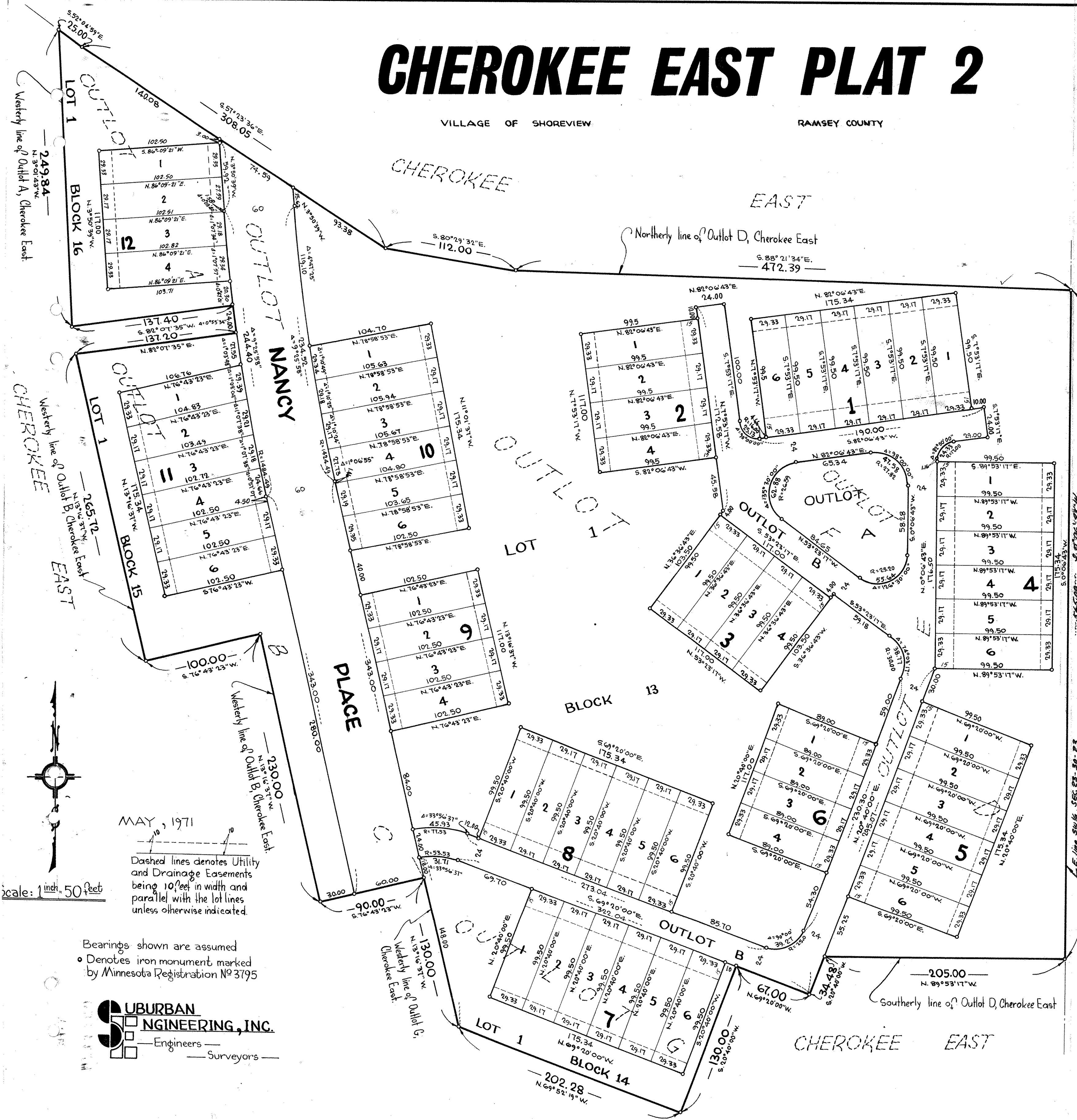


# CHEROKEE EAST PLAT 2

VILLAGE OF SHOREVIEW RAMSEY COUNTY



KNOW ALL MEN BY THESE PRESENTS: That The Dietrich Co., a Minnesota corporation, owner and proprietor and Schumacher Mortgage Company, Inc., a Delaware corporation, mortgagee of the following described property situated in the County of Ramsey and State of Minnesota towit: Outlots A, B, C, D, E, F, and G, Cherokee East; have caused the same to be surveyed and platted as CHEROKEE EAST PLAT 2 and does hereby donate and dedicate to the public for public use forever the Place and utility and drainage easements, (overhead utilities are not included, over Lot 1, Block 13; Lot 1, Block 14; Lot 1, Block 15; and Lot 1, Block 16) as shown on this plat. In witness whereof said The Dietrich Co. has caused these presents to be signed by its proper officers this 1st day of December A.D. 1971 and in witness whereof said Schumacher Mortgage Company, Inc. has caused these presents to be signed by its proper officers and its corporate seal to be hereunto affixed this 1st day of December A.D. 1971.

In Presence of:

As to Duane H. Dietrich and Warren O. Olson  
*Duane H. Dietrich* President  
*Warren O. Olson* Vice-President

As to Floyd Feikema and Dennis J. Czech  
*Floyd Feikema* Vice-President  
*Dennis J. Czech* President

THE DIETRICH CO.  
 SCHUMACHER MORTGAGE COMPANY, INC.

STATE OF MINNESOTA On this 1st day of December A.D. 1971, before me a Notary Public, within and for said County and State, personally appeared Duane H. Dietrich and Warren O. Olson, to me personally known, who being by me duly sworn, did say that they are the President and Vice-President respectively of The Dietrich Co., the corporation named in the foregoing instrument; that said instrument was signed in behalf of said corporation by authority of its Board of Directors, and said Duane H. Dietrich and Warren O. Olson acknowledged said instrument to be the free act and deed of said corporation.

*J. M. Higgins*  
 Notary Public, Hennepin County, Minnesota  
 My Commission Expires \_\_\_\_\_

STATE OF MINNESOTA On this 1st day of December A.D. 1971, before me a Notary Public, within and for said County and State, personally appeared Floyd Feikema and Dennis J. Czech, to me personally known, who being by me duly sworn, did say that they are the Vice-President and Assistant Vice President respectively of Schumacher Mortgage Company, Inc., the corporation named in the foregoing instrument; that the seal affixed to said instrument is the corporate seal of said corporation; and that said instrument was signed and sealed in behalf of said corporation by authority of its Board of Directors, and said Floyd Feikema and Dennis J. Czech acknowledged said instrument to be the free act and deed of said corporation.

*Roy S. Gray*  
 Notary Public, Hennepin County, Minnesota  
 My Commission Expires \_\_\_\_\_

I hereby certify that I have surveyed and platted the property described on this plat as CHEROKEE EAST PLAT 2; that this plat is a correct representation of said survey, that all distances are correctly shown on the plat in feet and decimals of a foot; that all monuments have been correctly placed in the ground as shown on said plat; that the outside boundary lines are correctly designated on said plat, and that there are no wet lands to be designated on said plat.

*E. A. Rathen*  
 Surveyor-Minn. Reg. #3795

STATE OF MINNESOTA Surveyor's certificate subscribed and sworn to before me, a Notary Public, this 30th day of November A.D. 1971.

*Marietta L. Zuehlke*  
 Notary Public, Anoka County, Minnesota  
 My Commission Expires \_\_\_\_\_

Approved by the Village Council of the Village of Shoreview, Minnesota, this 6th day of December A.D. 1971.

*W. B. Ford* Mayor  
*John D. Schlegel* Clerk

Accepted and approved this 10th day of December A.D. 1971.

*Walter A. Stutley* PLATO COMMISSION

*Roger M. ...* Commissioner of Public Works

MAY 10, 1971

Dashed lines denotes Utility and Drainage Easements being 10' feet in width and parallel with the lot lines unless otherwise indicated.

Bearings shown are assumed  
 • Denotes iron monument marked by Minnesota Registration No 3795

**URBAN ENGINEERING, INC.**  
 Engineers - Surveyors