

39

I hereby certify that I have surveyed and platted the property described on this plat as Palisade Addition to Saint Paul that this is a correct plat of said survey, and I have placed iron monuments at the corners of each and every block as shown on this map.

State of Minnesota, ss.  
County of Ramsey, ss.  
On this 14th day of June 1884, personally appeared before me, J. B. Howley, to me well known to be the identical person who surveyed the above described parcel of land and executed the above certificate, and acknowledged said certificate to be correct and his free act and deed.

James Starkey, Notary Public, Ramsey County.

Accepted by the Plat Commission on the 6th day of June 1884.

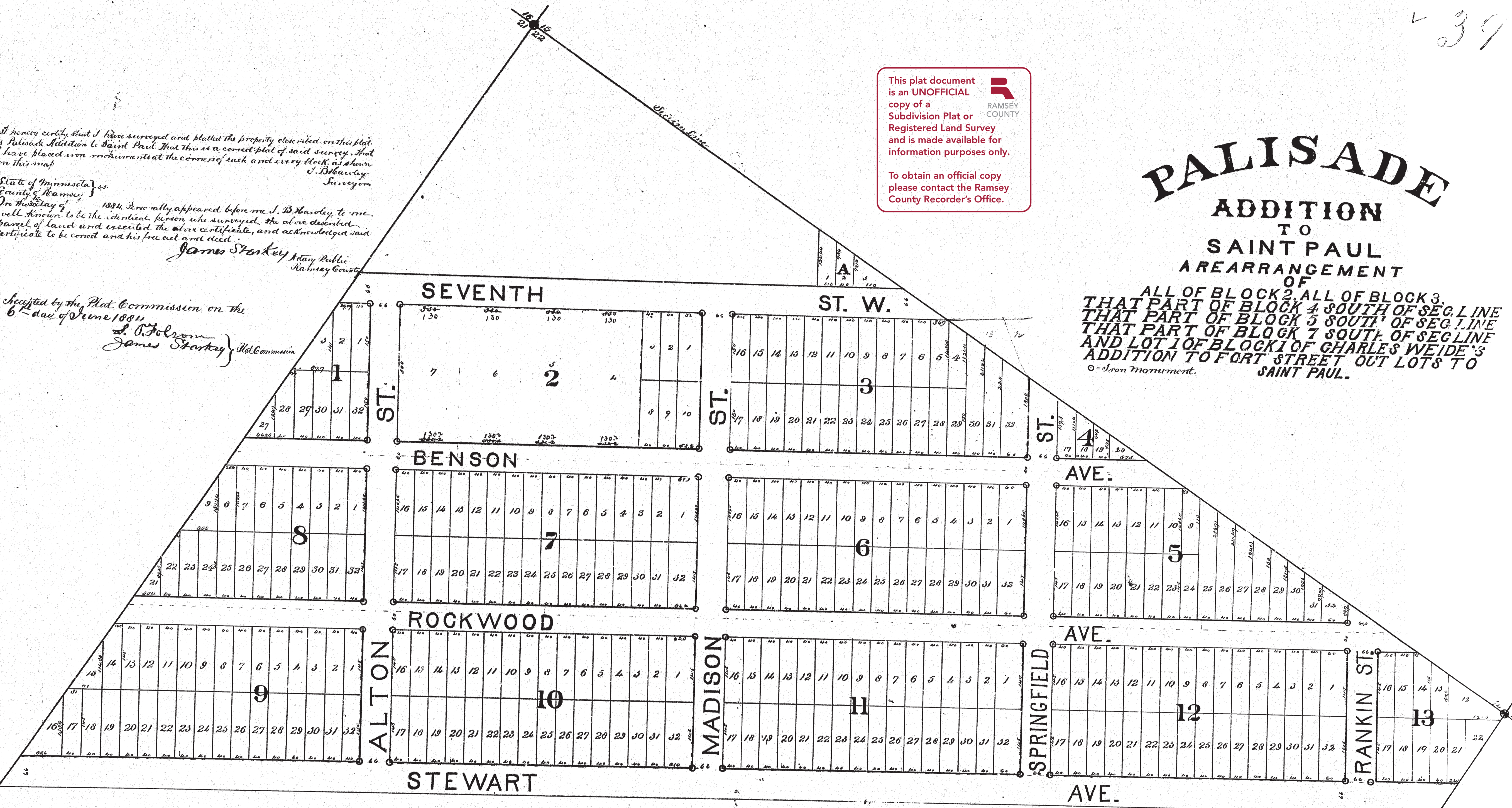
L. R. Holcomb, Notary Public, Ramsey County.

This plat document is an UNOFFICIAL copy of a Subdivision Plat or Registered Land Survey and is made available for information purposes only.

To obtain an official copy please contact the Ramsey County Recorder's Office.

# PALISADE ADDITION TO SAINT PAUL A REARRANGEMENT OF

ALL OF BLOCK 2, ALL OF BLOCK 3, THAT PART OF BLOCK 4 SOUTH OF SEG. 1 LINE THAT PART OF BLOCK 5 SOUTH OF SEG. 1 LINE THAT PART OF BLOCK 7 SOUTH OF SEG. 1 LINE AND LOT 1 OF BLOCK 1 OF CHARLES WEIDE'S ADDITION TO FORT STREET OUT LOTS TO SAINT PAUL.



We the undersigned owners of all of Block 2, Lot 1 of Block 1, Lots 1, 6, 7, 8, 9, 10, 11, 12, 13 & 14 of Block 3, Lots 1, 4, 5, 6, 7, 8, 9, 10, 11, 12, 13 & 14 of Block 4, Lots 1, 4, 5, 6, 7, 8 & 9 of Block 5, also as much of Lots 1 & 2 of Block 4, as much of Lots 1, 14, 2, 10 & 9 of Block 6, and as much of Lots 8, 9 & 10 of Block 7 as lie South of the Section Line between Sections 15 & 22 Township 28, Range 23, and lots 2 & 3, 11 & 12 of Block 11 in Charles Weide's Addition to Fort Street Out Lots to Saint Paul Minnesota, hereby certify, that we have caused the same to be surveyed and platted as Palisade Addition to Saint Paul, and do hereby dedicate to the public use forever the streets as on this plat laid out and indicated.

In witness whereof we have placed our hands and seals here on this 14th day of June 1884.

In the presence of  
J. B. Howley  
R. H. Neale

George F. Howley, Notary Public, Ramsey County.  
R. H. Neale, Notary Public, Ramsey County.

STATE OF MINNESOTA,  
County of Ramsey,  
OFFICE OF THE REGISTER OF DEEDS.

This is to certify that the plat of the Palisade Addition to Saint Paul, Minnesota, as shown on this plat, was filed in this office, at St. Paul, on the 14th day of June, A. D. 1884, at 2 o'clock P. M., and that the same was duly recorded in Book 11 of Deeds, page 11.

R. S. Howley, Register of Deeds.

George F. Howley (Notary)  
Emma F. Benson (Notary)  
George E. Benson (Notary)  
George E. Benson (Notary)  
Anna L. Benson (Notary)  
George E. Benson (Notary)  
Nate L. Seymour (Notary)

State of Minnesota, ss.  
County of Ramsey, ss.  
On the 14th day of June 1884 personally appeared before me Frank S. Seymour and Nate L. Seymour his wife, Charles Weide, and Emma L. Benson, his wife, and George E. Benson, to me well known to be the identical persons who executed the adjoining certificate, and acknowledged the same to be their free act and deed.

Frank S. Seymour, Notary Public, Ramsey County, Minnesota.

State of Minnesota, ss.  
County of Mahaska, ss.  
On the 20th day of May 1884 personally appeared before me George F. Benson and Emma F. Benson his wife, and Clarence E. Howley, to me well known to be the identical persons who executed the adjoining certificate, and acknowledged the same to be their free act and deed.

George F. Benson, Notary Public, Mahaska County, Minnesota.

Taxes paid  
June 27, 1884