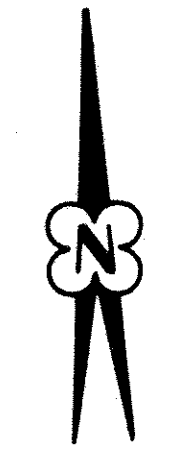
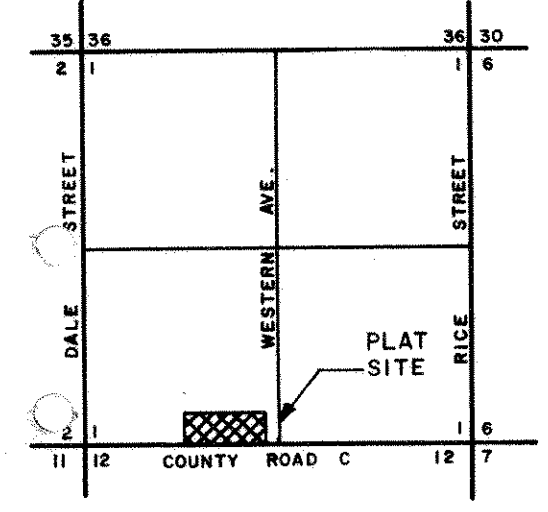


WILLMUS ESTATES PLAT NO. 2

VILLAGE OF ROSEVILLE RAMSEY COUNTY MINNESOTA

o INDICATES IRON MONUMENT E.C. BATHER & ASSOCIATES SCALE 1" = 100'
PROFESSIONAL ENGINEERS & LAND SURVEYORS
ST. PAUL 13, MINNESOTA

LOCATION MAP
SEC. 1, T29, R23W



KNOW ALL MEN BY THESE PRESENTS: that E.H. Willmus Properties, Incorporated, owner of the tract of land described as follows: Beginning at a point on the South line of the South 1/2 of the SW 1/4 of Section 1, T 29 N, R 23W, distant 168.0 feet west of the east corner of said South 1/2; thence west along the south line of said South 1/2 on a bearing of N 90°00' W, a distance of 1114.96'; thence North on a bearing of N 00°00' E a distance of 243.0 feet; thence East on a bearing of N 90°00' E a distance of 1112.96'; thence South on a bearing of S 00°14' 38" E a distance of 243.0 feet to the point of beginning, subject to County Road C and of record, as now on file at the office of the Register of Deeds of Ramsey County; in the Village of Roseville, Ramsey County, have caused the same to be surveyed and platted and hereafter known as "Willmus Estates Plat No. 2", and do hereby dedicate forever, all streets and avenues, and all utility and drainage easements as shown.

Witness our hands and seal this 19 day of AUGUST A.D. 1968.
E.H. Willmus Properties, Inc.

In Presence of:
Shelby J. Tamm Thomas M. Willmus
Witness Thomas M. Willmus, President
Shelby J. Webster Geraldine Willmus
Witness Geraldine Willmus, Secretary-Treasurer

STATE OF MINNESOTA)
COUNTY OF RAMSEY) SS On this 19th day of AUGUST A.D. 1968, before me personally appeared Thomas M. Willmus and Geraldine Willmus who each, being duly sworn did say that they are respectively the President and Treasurer of E.H. Willmus Properties, Incorporated, a Minnesota Corporation, the corporation named in the foregoing instrument, and that the seal affixed to same instrument is the corporate seal of said corporation and that said instrument was signed and sealed in behalf of said corporation by authority of its Board of Directors, and said President and said Secretary-Treasurer acknowledged said instrument, free act and deed of said corporation.

LEWIS L. ANDERSON
Notary Public RAMSEY County, Minnesota
My Commission Expires AUGUST 21, 1969

I, E.C. Bather, hereby certify that I have surveyed and platted the property described on this plat as Willmus Estates Plat No. 2, that this plat is a correct representation of said survey; that all distances are correctly shown on the plat in feet and decimals of a foot, and that the monuments for the guidance of future surveys have been correctly placed in the ground as shown on the plat; that the outside boundary, correctly designated on the plat; and that there are no wet lands or public highways to be designated on said plat other than:

E.C. Bather
Surveyor - Minnesota Registration No. 1237

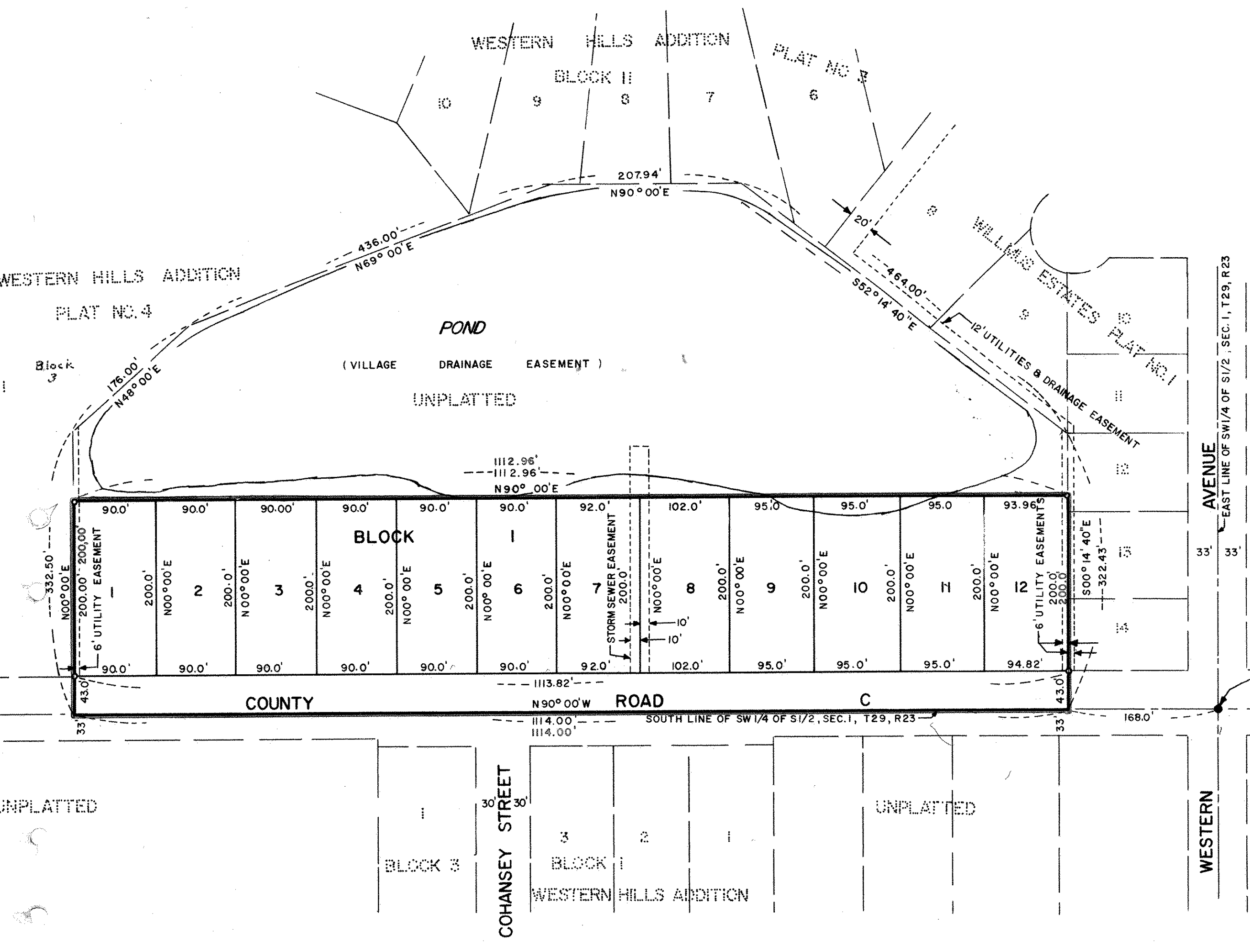
STATE OF MINNESOTA)
COUNTY OF RAMSEY) SS On this 18th day of JUNE A.D. 1968, before me personally appeared E.C. Bather, known to be the person described in and who executed the foregoing instrument and acknowledged that he executed the same as his act and deed.

Ernest J. [Signature]
Notary Public Ramsey County, Minnesota
My Commission Expires AUG 24, 1969

Accepted and approved by the Village of Roseville this 9 day of SEPTEMBER A.D. 1968.

A. James [Signature] Mayor
Attest: [Signature] Village Clerk

Accepted and approved this 15th day of November 1968 A.D.
Walter J. Bremer)
[Signature]) Plat Commission
[Signature]) Commissioner of Public Work



SE. CORNER OF SW 1/4 OF S 1/2 SEC. 1, T29, R23.