

EM. MAC KUBIN'S ADDITION TO SAINT PAUL

This plat document is an UNOFFICIAL copy of a Subdivision Plat or Registered Land Survey and is made available for information purposes only.

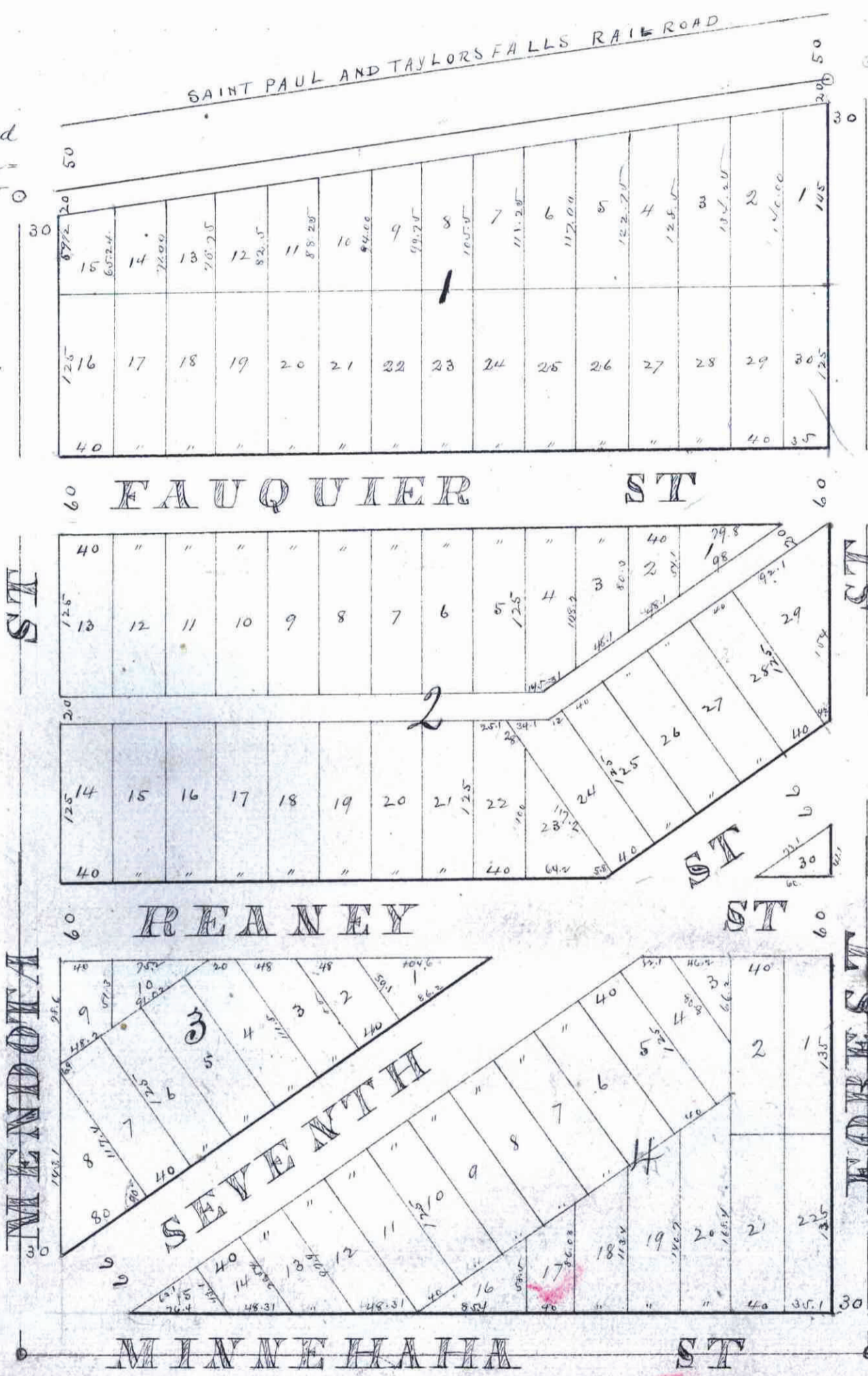
To obtain an official copy please contact the Ramsey County Recorder's Office.

We hereby certify to having located and set the monument at the corner of Minnehaha and Mendota sts at 1/4 sec. cor - 658 feet East of sec cor - 28-29-32-33 S. 29 R 22
 Simon & Morton
 Civil Engineers
 St Paul Dec. 7/1881

STATE OF MINNESOTA
 County of Ramsey
 Office of the Register of Deeds
 This is to certify that the within was filed for Record in this Office, at St. Paul, on the 11th day of December, A. D. 1881 at 2:30 o'clock P. M., and that the same was duly recorded in Book... of... Plats... pages 15...
 Otto Dreier
 Register of Deeds
 By J. H. Miller Deputy

St Paul, Dec 9th 1881
 Taxes Paid
 J. M. Curdy
 County Auditor

Note
 All lots fronting on 7th Street are laid out at right angles to 7th Street
 All other lots are laid out parallel to Mendota Street and are 40 feet front & 125 feet deep without otherwise marked on the map, the way to get at any lot except those fronting on 7th Street is to measure from Mendota Street east on the line of any street or alley for the lots on 7th Street commencing the measurement at SW corner of block 87 at intersection of Mendota & 7th St



I Gats A Johnson do hereby certify that at the request of the Proprietor E. M. Mackubin I made a Survey of so much of the East half (1/2) of the West half (1/2) of the South West quarter (1/4) of Section Twenty Eight (28) in Township Twenty Nine (29) of Range Twenty Two (22) as lies South of the South line of the Saint Paul Stillwater and Taylors Falls Railroad Condemnation, and have made this Plat subdividing said land into Lots, Blocks, Streets and alleys in proportion and of the Measurements herein indicated the Scale thereof being 100 feet to the inch and have designated said Plats E. M. Mackubins Addition to Saint Paul that I have adopted the Stone Monument at the S.E. Corner of Arlington Hills addition as the starting point and guidance of future surveys
 Dated Saint Paul Minn August 24th 1880

Gats A. Johnson
 Surveyor

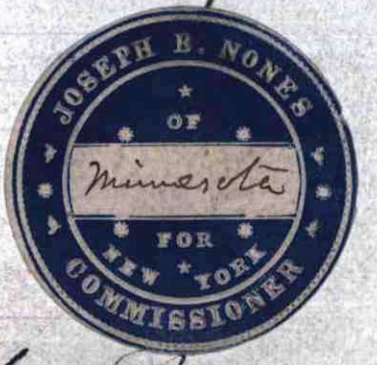
State of Minnesota ss
 County of Ramsey
 Be it known that on this 24th day of August A.D. 1880 before me personally came Gats A. Johnson and acknowledged that he executed the foregoing Certificate of Survey
 Robt. S. Lewis, Notary Public

Know all Men by these presents that I E. M. Mackubin of the City of Saint Paul County of Ramsey & State of Minnesota the proprietor of the property described in the foregoing certificate of Gats A. Johnson Surveyor and platther to hereon shown and named E. M. Mackubins Addition to Saint Paul and I do hereby dedicate to the public use the Streets & alleys as upon said Plat designated.
 Witness my hand & seal this 28th day of Oct. 1880.
 Signed Sealed & delivered in presence of
 Ellen M. Mackubin

State of New York ss
 County of New York
 Be it known that on this 28th day of October A.D. 1881 before me personally came E. M. Mackubin and acknowledged that she executed the foregoing dedication of E. M. Mackubins Addition to Saint Paul for the uses & purposes therein expressed
 J. J. Jones

Commissioner of the State of Minnesota,
 in New York - No. 91 Duane Street
 corner of Broadway

Approved St Paul Nov 7 1881,
 J. J. Jones
 Commissioner



Accepted, Be
 Special Comm.
 Oct 24 1881
 J. J. Jones

Taxes paid & transfer entered this 27th day of August 1880.

J. Lee Davis
 County Auditor
 J. L. Davis
 Deputy

CITY TREASURER'S OFFICE,
 ST. PAUL, MINN.,
 DEC 9 1881
 ASSESSMENTS PAID.
 J. H. Reed CITY TREAS.

CITY TREASURER'S OFFICE,
 ST. PAUL, MINN.,
 AUG 27 1880
 ASSESSMENTS PAID.
 J. H. Reed CITY TREAS.

CITY TREASURER'S OFFICE,
 ST. PAUL, MINN.,
 NOV 4 1881
 ASSESSMENTS PAID.
 J. H. Reed CITY TREAS.