

33

COLEMAN'S SUBDIVISION

O F

Lots 1 and 2 of Block 7
of

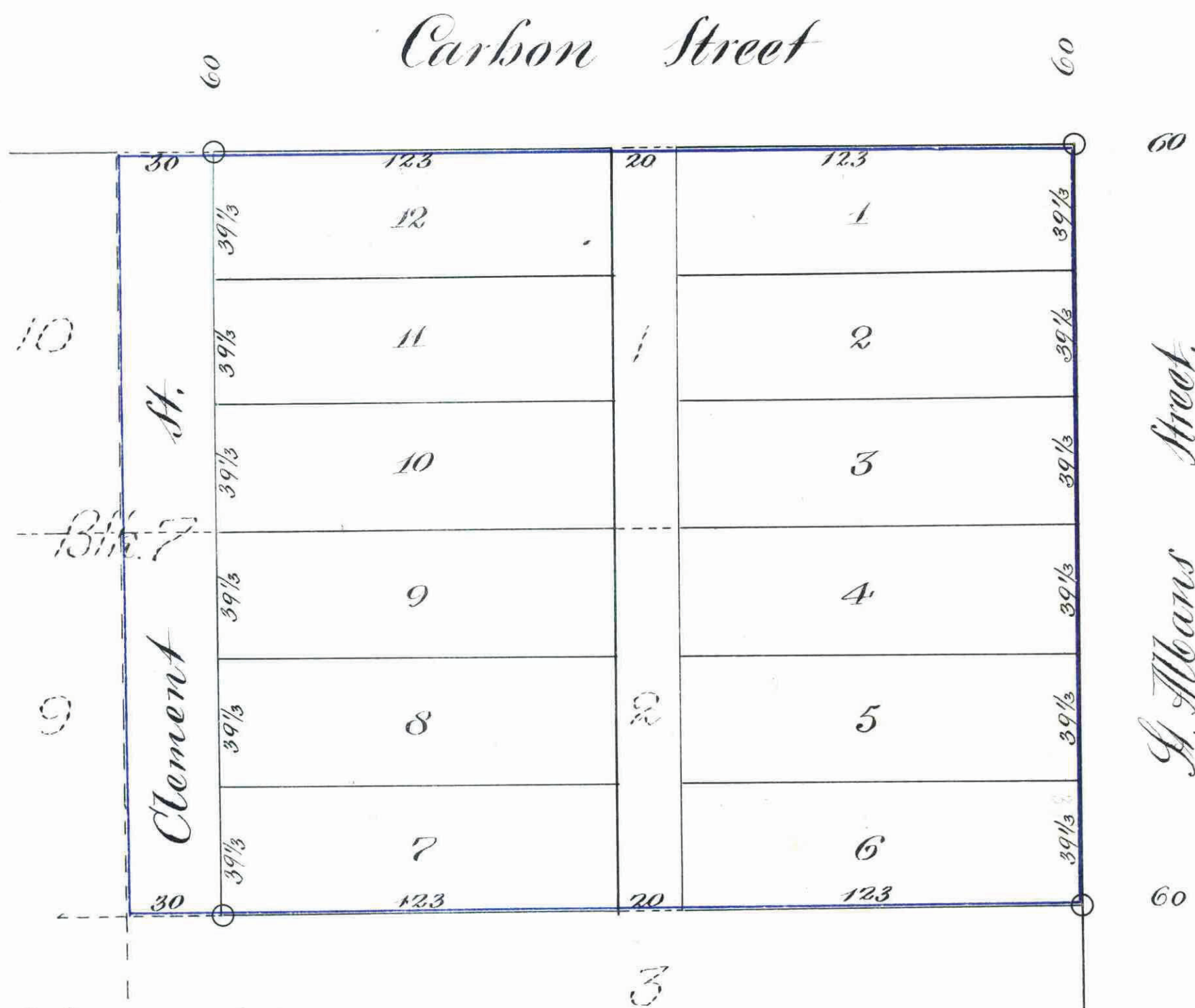
Rogers and Hendrick's Acre Lots

Scale: 1 in. 40 feet

Hawley & Newell

Civil Engineers

Indicates iron monuments



This plat document is an UNOFFICIAL copy of a Subdivision Plat or Registered Land Survey and is made available for information purposes only.

To obtain an official copy please contact the Ramsey County Recorder's Office.

STATE OF MINNESOTA, ss.
County of Ramsey.
I, Wm. H. H. H. H., Register of Deeds,
do hereby certify that the within
instrument was filed for record
in this Office, at St. Paul, on the
18th day of April, A. D. 1886, and
that the same was duly recorded in
Book 472 of Maps, pages 112,
113, 114, 115, 116, 117, 118, 119,
120, 121, 122, 123, 124, 125, 126,
127, 128, 129, 130, 131, 132, 133,
134, 135, 136, 137, 138, 139, 140,
141, 142, 143, 144, 145, 146, 147,
148, 149, 150, 151, 152, 153, 154,
155, 156, 157, 158, 159, 160, 161,
162, 163, 164, 165, 166, 167, 168,
169, 170, 171, 172, 173, 174, 175,
176, 177, 178, 179, 180, 181, 182,
183, 184, 185, 186, 187, 188, 189,
190, 191, 192, 193, 194, 195, 196,
197, 198, 199, 200, 201, 202, 203,
204, 205, 206, 207, 208, 209, 210,
211, 212, 213, 214, 215, 216, 217,
218, 219, 220, 221, 222, 223, 224,
225, 226, 227, 228, 229, 230, 231,
232, 233, 234, 235, 236, 237, 238,
239, 240, 241, 242, 243, 244, 245,
246, 247, 248, 249, 250, 251, 252,
253, 254, 255, 256, 257, 258, 259,
260, 261, 262, 263, 264, 265, 266,
267, 268, 269, 270, 271, 272, 273,
274, 275, 276, 277, 278, 279, 280,
281, 282, 283, 284, 285, 286, 287,
288, 289, 290, 291, 292, 293, 294,
295, 296, 297, 298, 299, 300, 301,
302, 303, 304, 305, 306, 307, 308,
309, 310, 311, 312, 313, 314, 315,
316, 317, 318, 319, 320, 321, 322,
323, 324, 325, 326, 327, 328, 329,
330, 331, 332, 333, 334, 335, 336,
337, 338, 339, 340, 341, 342, 343,
344, 345, 346, 347, 348, 349, 350,
351, 352, 353, 354, 355, 356, 357,
358, 359, 360, 361, 362, 363, 364,
365, 366, 367, 368, 369, 370, 371,
372, 373, 374, 375, 376, 377, 378,
379, 380, 381, 382, 383, 384, 385,
386, 387, 388, 389, 390, 391, 392,
393, 394, 395, 396, 397, 398, 399,
400, 401, 402, 403, 404, 405, 406,
407, 408, 409, 410, 411, 412, 413,
414, 415, 416, 417, 418, 419, 420,
421, 422, 423, 424, 425, 426, 427,
428, 429, 430, 431, 432, 433, 434,
435, 436, 437, 438, 439, 440, 441,
442, 443, 444, 445, 446, 447, 448,
449, 450, 451, 452, 453, 454, 455,
456, 457, 458, 459, 460, 461, 462,
463, 464, 465, 466, 467, 468, 469,
470, 471, 472, 473, 474, 475, 476,
477, 478, 479, 480, 481, 482, 483,
484, 485, 486, 487, 488, 489, 490,
491, 492, 493, 494, 495, 496, 497,
498, 499, 500, 501, 502, 503, 504,
505, 506, 507, 508, 509, 510, 511,
512, 513, 514, 515, 516, 517, 518,
519, 520, 521, 522, 523, 524, 525,
526, 527, 528, 529, 530, 531, 532,
533, 534, 535, 536, 537, 538, 539,
540, 541, 542, 543, 544, 545, 546,
547, 548, 549, 550, 551, 552, 553,
554, 555, 556, 557, 558, 559, 560,
561, 562, 563, 564, 565, 566, 567,
568, 569, 570, 571, 572, 573, 574,
575, 576, 577, 578, 579, 580, 581,
582, 583, 584, 585, 586, 587, 588,
589, 590, 591, 592, 593, 594, 595,
596, 597, 598, 599, 600, 601, 602,
603, 604, 605, 606, 607, 608, 609,
610, 611, 612, 613, 614, 615, 616,
617, 618, 619, 620, 621, 622, 623,
624, 625, 626, 627, 628, 629, 630,
631, 632, 633, 634, 635, 636, 637,
638, 639, 640, 641, 642, 643, 644,
645, 646, 647, 648, 649, 650, 651,
652, 653, 654, 655, 656, 657, 658,
659, 660, 661, 662, 663, 664, 665,
666, 667, 668, 669, 670, 671, 672,
673, 674, 675, 676, 677, 678, 679,
680, 681, 682, 683, 684, 685, 686,
687, 688, 689, 690, 691, 692, 693,
694, 695, 696, 697, 698, 699, 700,
701, 702, 703, 704, 705, 706, 707,
708, 709, 710, 711, 712, 713, 714,
715, 716, 717, 718, 719, 720, 721,
722, 723, 724, 725, 726, 727, 728,
729, 730, 731, 732, 733, 734, 735,
736, 737, 738, 739, 740, 741, 742,
743, 744, 745, 746, 747, 748, 749,
750, 751, 752, 753, 754, 755, 756,
757, 758, 759, 760, 761, 762, 763,
764, 765, 766, 767, 768, 769, 770,
771, 772, 773, 774, 775, 776, 777,
778, 779, 780, 781, 782, 783, 784,
785, 786, 787, 788, 789, 790, 791,
792, 793, 794, 795, 796, 797, 798,
799, 800, 801, 802, 803, 804, 805,
806, 807, 808, 809, 810, 811, 812,
813, 814, 815, 816, 817, 818, 819,
820, 821, 822, 823, 824, 825, 826,
827, 828, 829, 830, 831, 832, 833,
834, 835, 836, 837, 838, 839, 840,
841, 842, 843, 844, 845, 846, 847,
848, 849, 850, 851, 852, 853, 854,
855, 856, 857, 858, 859, 860, 861,
862, 863, 864, 865, 866, 867, 868,
869, 870, 871, 872, 873, 874, 875,
876, 877, 878, 879, 880, 881, 882,
883, 884, 885, 886, 887, 888, 889,
890, 891, 892, 893, 894, 895, 896,
897, 898, 899, 900, 901, 902, 903,
904, 905, 906, 907, 908, 909, 910,
911, 912, 913, 914, 915, 916, 917,
918, 919, 920, 921, 922, 923, 924,
925, 926, 927, 928, 929, 930, 931,
932, 933, 934, 935, 936, 937, 938,
939, 940, 941, 942, 943, 944, 945,
946, 947, 948, 949, 950, 951, 952,
953, 954, 955, 956, 957, 958, 959,
960, 961, 962, 963, 964, 965, 966,
967, 968, 969, 970, 971, 972, 973,
974, 975, 976, 977, 978, 979, 980,
981, 982, 983, 984, 985, 986, 987,
988, 989, 990, 991, 992, 993, 994,
995, 996, 997, 998, 999, 1000.

This is to certify that Clement L. Coleman (Bachelor) proprietor of Lots one (1) and two (2) of Block seven (7) of Rogers and Hendrick's Acre Lots, has caused the same to be surveyed and platted and hereafter known as "Coleman's Subdivision of Lots one and two of Block 7 of Rogers and Hendrick's Acre Lots" as shown by this plat and hereby dedicates to the public and for the public use forever, all the streets, and alley as here in indicated.

Witness my hand and seal this 6th day of April A. D. 1886
In presence of } Clement L. Coleman (Seal)
Fred A. Rullmann }
F. J. Shepard }

County of Ramsey } s.s.
State of Minnesota }
On this 6th day of April A. D. 1886, personally appeared before the undersigned, Clement L. Coleman (Bachelor), to me well known, and acknowledged that he executed the foregoing certificate as his own free act and deed.
Fred A. Rullmann
Notary Public,
Ramsey Co., Minn.

We hereby certify to having surveyed and platted the property as described on this map as "Coleman's Subdivision of Lots 1 and 2 of Block 7 of Rogers and Hendrick's Acre Lots" and have placed iron monuments at the corners of the block as shown on this map and the same is correct.
Hawley & Newell
Civil Engineers

County of Ramsey } s.s.
State of Minnesota }
On this 6th day of April A. D. 1886, personally appeared before the undersigned, W. F. Russell, to me well known, and acknowledged that he executed the foregoing certificate as his own free act and deed.
W. F. Russell
Notary Public,
Ramsey Co., Minn.
Accepted and approved this 19th day of April A. D. 1886.
J. S. Holman }
Geo. Starkey } Plat Commissioners

I hereby recommend the acceptance of the within plat by the Common Council of the City of St. Paul on the 22nd day of April A. D. 1886.
L. W. Rosdellitt
City Engineer.

Accepted by the Common Council of the City of St. Paul on the 22nd day of April A. D. 1886.
Wm. H. H. H. H. City Clerk

Transferred to the County Auditor James O'Brien Ramsey Co. Minn.
Assessments
City Treasurer
St. Paul

OFFICE OF THE COUNTY TREASURER, ST. PAUL, MINN.
APR 26 1886
1886 TAX PAID
Wm. H. H. H. H. County Treasurer

CITY TREASURER'S OFFICE, ST. PAUL, MINN.
APR 26 1886
ASSESSMENTS PAID
Wm. H. H. H. H. City Treasurer