

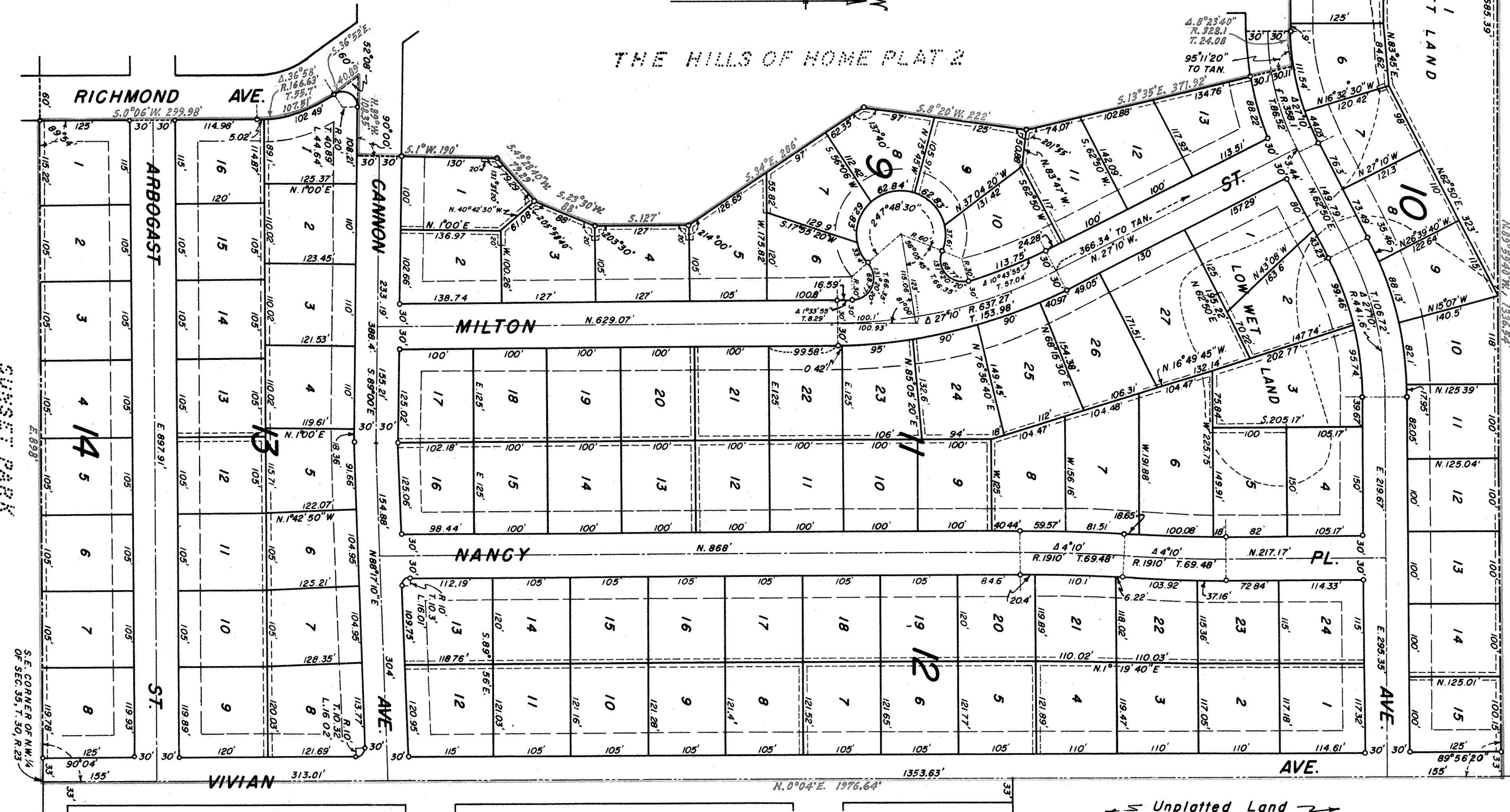
# THE HILLS OF HOME PLAT 3 SHOREVIEW, MINN.

SCALE: 1 IN. = 100 FEET.  
o INDICATES IRON MONT.

R. C. WOLFGRAM  
SURVEYOR

----- Indicates building setback line 30 feet from nearest parallel lot line.

----- Indicates utilities easement line 6 feet from nearest parallel lot line, except as shown otherwise



Accepted by the Council June 15 A. D. 1964.  
Approved Charles J. Heier A. D. 1964.  
Village Clerk, Shoreview, Minn.

Accepted and approved this 15<sup>th</sup> day of April A. D. 1964.

W. H. Johnson  
Ray West  
Plat Commission  
W. H. Johnson  
Commissioner of Public Works

State of Minnesota } s.s.  
County of Ramsey }  
On this 13 day of APRIL A. D. 1964 before me appeared WILLIAM D. CLAPP and H. H. THOMSEN, who each being duly sworn did say that they are respectively the PRESIDENT and SECRETARY of Norlex Corporation, a Minnesota corporation, the corporation named in the foregoing instrument and the seal attached to same instrument is the corporate seal of said corporation and that said instrument was signed and sealed in behalf of said corporation by authority of the Board of Directors, and said WILLIAM D. CLAPP and H. H. THOMSEN acknowledged said instrument to be the free act and deed of said corporation.

Wm. E. Johnson  
Notary Public, Ramsey County, Minnesota.  
My commission expires AUG 24, 1967

I hereby certify to having surveyed the property described on this plat as The Hills of Home Plat 3, and have placed iron monuments at the corners shown and the same is correct.  
There is no low wet ground nor any traveled road or easement on or across the same except as shown.

State of Minnesota } s.s.  
County of Ramsey }

On this 13 day of APRIL A. D. 1964 before me the undersigned personally appeared R. C. Wolfram, to me known to be the person described in and who executed the foregoing instrument and acknowledged that he executed the same as his free act and deed.

R. C. Wolfram  
Registered Land Surveyor  
Minnesota Certificate No. 1340  
Wm. E. Johnson  
Notary Public, Ramsey County, Minnesota.  
My commission expires AUG 22, 1967

This is to certify that Norlex Corporation, a Minnesota corporation, owner of the South three fourths (3/4) of the Northwest quarter (N. W. 4) of Section 30, Range 23 except the South 480 feet of West 483 feet thereof and except that part thereof in the Hills of Home and except that part thereof in the Hills of Home Plat 2, according to the respective plats thereof on file in the office of Register of Deeds in and for Ramsey County, Minnesota, has caused the same to be surveyed and platted and hereafter known as The Hills of Home Plat 3 as shown by this plat, and hereby dedicates to the public and for the public use forever all streets, avenues, places and easements as shown.

Witness our hands and the corporate seal of said corporation this 23<sup>rd</sup> day of APRIL A. D. 1964.  
In presence of  
Wm. E. Johnson  
Joe M. England  
Norlex Corporation  
William D. Clapp Its PRESIDENT  
By R. H. Thomesen Its SECRETARY