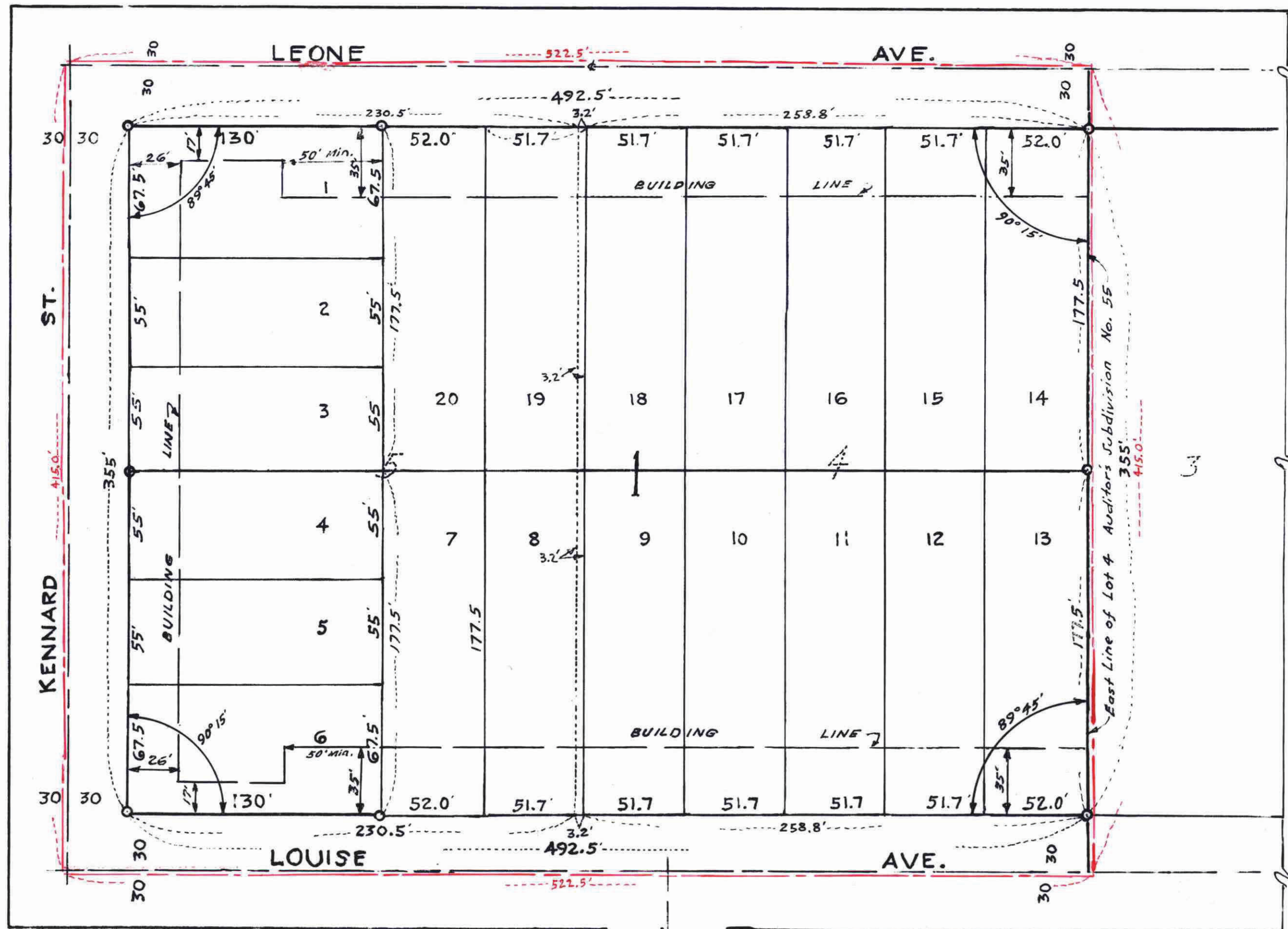


25/10

# JOHN W. FARVOUR'S ADDITION

ST. PAUL, RAMSEY COUNTY, MINNESOTA.



SCALE: 1" = 50'  
O - IRON MON.

KNOW ALL MEN BY THESE PRESENTS: THAT WE, JOHN W. FARVOUR AND MARILYN C. FARVOUR, HUSBAND AND WIFE, RESPECTIVELY, OWNERS OF THE FOLLOWING DESCRIBED REAL ESTATE IN THE COUNTY OF RAMSEY, STATE OF MINNESOTA, TO WIT: THAT PART OF LOTS FOUR (4) AND FIVE (5), AUDITOR'S SUBDIVISION NUMBER FIFTY-FIVE (55), ST. PAUL, MINNESOTA, LYING SOUTH OF THE CENTER LINE OF LEONE AVENUE, AND SUBJECT TO LEONE AVENUE, LOUISE AVENUE, AND KENNARD STREET, AS ON FILE IN THE OFFICE OF THE REGISTER OF DEEDS OF SAID COUNTY, AND AS SHOWN ON THE ANNEXED PLAT, HAVE CAUSED THE SAME TO BE SURVEYED AND PLATTED INTO LOTS AND BLOCK, AND NAMED AND DESIGNATED AS JOHN W. FARVOUR'S ADDITION, AND HAVE CAUSED THE ANNEXED PLAT TO BE MADE ACCORDING TO STATUTES.

IN WITNESS WHEREOF, SAID JOHN W. FARVOUR AND MARILYN C. FARVOUR HAVE CAUSED THESE PRESENTS TO BE SIGNED BY THEMSELVES AS OWNERS, THIS 25<sup>th</sup> DAY OF October 1963.

WITNESSES: *James J. Nyquist* SIGNED *John W. Farvour*  
*Guy D. Kullander* SIGNED *Marilyn C. Farvour*

STATE OF MINNESOTA } ss  
COUNTY OF RAMSEY }

ON THIS 28<sup>th</sup> DAY OF October A.D. 1963, BEFORE ME A NOTARY PUBLIC WITHIN AND FOR SAID COUNTY PERSONALLY APPEARED JOHN W. FARVOUR AND MARILYN C. FARVOUR, TO ME KNOWN WHO BEING EACH BY ME DULY SWORN DID SAY THAT THEY ARE THE PERSONS NAMED IN THE ABOVE INSTRUMENT AND THAT SAID INSTRUMENT WAS SIGNED AND SEALED IN THEIR BEHALF BY THEMSELVES, AND ACKNOWLEDGED SAID INSTRUMENT TO BE THEIR FREE ACT AND DEED.

*Kenneth C. Newcomb* KENNETH C. NEWCOMB  
Notary Public, Ramsey County, Minn.  
My Commission Expires Aug. 4, 1968

I HEREBY CERTIFY TO HAVING SURVEYED AND PLATTED, AT THE REQUEST OF THE ABOVE NAMED LAND OWNERS, THE PROPERTY DESCRIBED ON THIS PLAT AND NAMED AND DESIGNATED AS JOHN W. FARVOUR'S ADDITION, AND HAVE SUBDIVIDED THE SAME INTO LOTS AND BLOCK AS SHOWN ON THE ANNEXED PLAT. I FURTHER CERTIFY THAT THE OUTSIDE BOUNDARIES ARE CORRECTLY DESCRIBED, THAT MEASUREMENTS WERE MADE ON THE GROUND AND ARE CORRECTLY SHOWN ON THE ANNEXED PLAT, THAT THE MONUMENTS CONSISTING OF DURABLE IRON PIPES HAVE BEEN PLACED CORRECTLY IN THE GROUND AT POINTS INDICATED ON THE ANNEXED PLAT, THAT THERE ARE NO WET LANDS OR WET PUBLIC ROADS ON THIS PLAT, THAT ALL INFORMATION ON SAID ANNEXED PLAT IS CORRECTLY SHOWN TO THE BEST OF MY KNOWLEDGE AND BELIEF.

*Stephen J. Nestavál* SURVEYOR  
STEPHEN J. NESTAVÁL - MINN. REG. NO. 2731

STATE OF MINNESOTA } ss  
COUNTY OF RAMSEY }

ON THIS 28<sup>th</sup> DAY OF October A.D. 1963, BEFORE ME, A NOTARY PUBLIC WITHIN AND FOR SAID COUNTY, PERSONALLY APPEARED STEPHEN J. NESTAVÁL, TO ME KNOWN TO BE THE PERSON DESCRIBED IN, AND WHO EXECUTED THE FOREGOING INSTRUMENT AND ACKNOWLEDGED THAT HE EXECUTED THE SAME AS HIS FREE ACT AND DEED.

*Kenneth C. Newcomb* KENNETH C. NEWCOMB  
Notary Public, Ramsey County, Minn.  
My Commission Expires Aug. 4, 1968

ACCEPTED AND APPROVED THIS 28<sup>th</sup> DAY OF October A.D. 1963.

*Alfred D. Crumpton*  
*Guy D. Kullander* } PLAT COMMISSION  
*Robert T. Gibbons*  
*Michael P. Ryan* } COMMISSIONER OF PUBLIC WORKS.

ACCEPTED AND APPROVED BY THE COUNCIL THIS 30<sup>th</sup> DAY OF October A.D. 1963

*Agnes H. Donnell* CITY CLERK

This plat document is an UNOFFICIAL copy of a Subdivision Plat or Registered Land Survey and is made available for information purposes only.

To obtain an official copy please contact the Ramsey County Recorder's Office.

DOCUMENT NUMBER 463550

Genl. File Number 206910

BOOK 460 PAGE 410

STATE OF MINNESOTA } ss  
COUNTY OF RAMSEY }

OFFICE OF THE REGISTER OF TITLES

This is to certify that the within instrument was filed in this office at St. Paul, Minn. on the 31 day of Oct. A.D. 1963

at 1:30 o'clock P.M.

ROBERT T. GIBBONS  
Registrar of Titles

By *Eugene A. Monick*

Taxes for the year 1962 on the lands described herein PAID

OCT 29 1963

WILLIAM M. KILLECK, Trustee  
RAMSEY COUNTY, MINNESOTA

TAXES PAID AND TRANSFER ENTERED

OCT 29 1963

EUGENE A. MONICK, Auditor  
RAMSEY COUNTY, MINN.