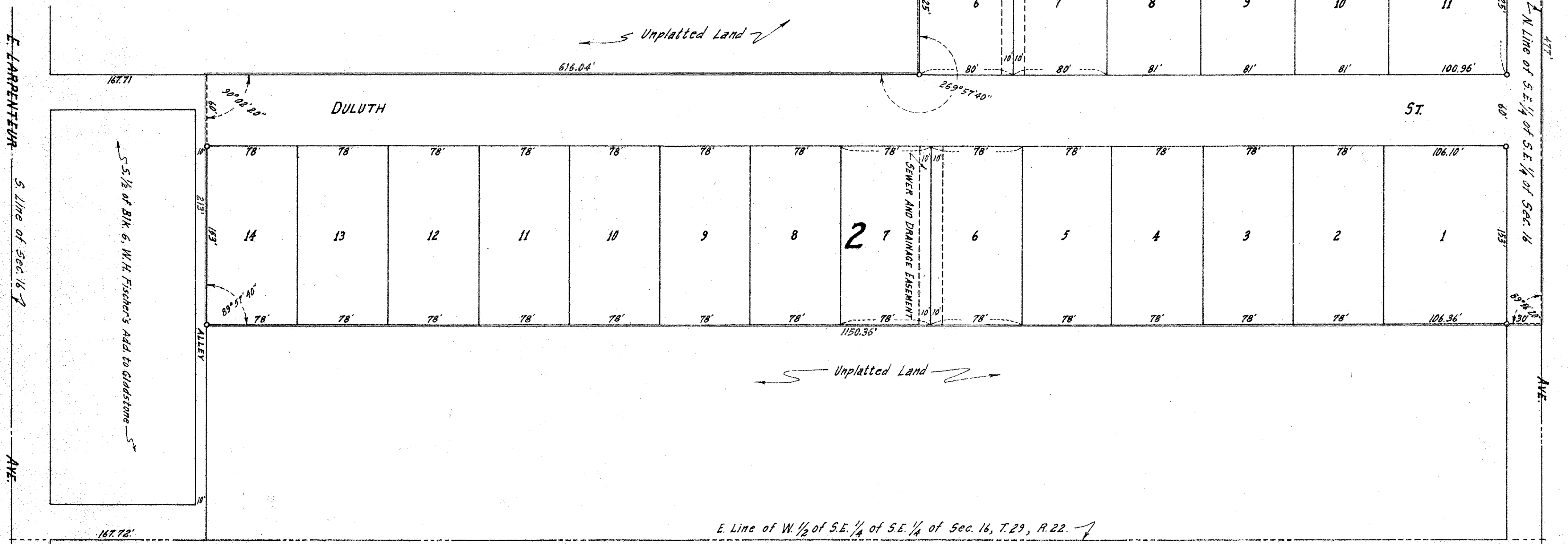


# GELB'S ADDITION

MAPLEWOOD, MINN.

SCALE - 1 INCH = 60 FEET  
O INDICATES IRON MONT.

R.C. WOLFGRAM  
SURVEYOR



I hereby certify to having surveyed the property described on this plat as Gelb's Addition and have placed iron monuments at the corners shown and the same is correct.  
There is no low wet land nor any traveled road or easement on or across the same except as shown.

R.C. Wolgram  
Registered Land Surveyor  
Minnesota Certif. No. 1340

State of Minnesota }  
County of Ramsey } s.s.

On this 20th day of December, A. D. 1961 before me the undersigned personally appeared R. C. Wolgram, to me known to be the person described in and who executed the foregoing instrument and acknowledged that he executed the same as his free act and deed.

Cecilia T. Peterson  
Notary Public, Ramsey County, Minnesota.  
My Commission expires April 2, 1966

This is to certify that Crown Builders, Inc., a Minnesota corporation, owner of all that part of the West 8 acres of the West 1/2 of Southeast 1/4 of Southeast 1/4 of Section 16, Township 29, Range 22 lying North of a line running parallel to and distant 783.75 feet North of the South line of said Section 16, and the West 213 feet of the Northerly 10 1/2 acres of Easterly 12 acres of said West 1/2 of Southeast 1/4 of Southeast 1/4 of Section 16 has caused the same to be surveyed and platted and hereafter known as Gelb's Addition as shown by this plat, and hereby dedicates to the public and for the public use forever all streets, avenues, and sewer and drainage easements as shown.

Witness our hands and seals this 20th day of December, A. D. 1961.  
In presence of  
Cecilia T. Peterson Crown Builders, Inc.  
M. L. Daly By Howard H. Gelb Its President  
By Cabin Lerman Its Vice President

State of Minnesota }  
County of Ramsey } s.s.  
On this 20th day of December, A. D. 1961 before me appeared Howard H. Gelb and Cabin Lerman, who each being duly sworn did say that they are respectively the President and Vice President of Crown Builders, Inc., a Minnesota corporation, the corporation named in the foregoing instrument and the seal affixed to same instrument is the corporate seal of said corporation and that said instrument was signed and sealed in behalf of said corporation by authority of its Board of Directors, and said Howard H. Gelb and said Cabin Lerman acknowledged said instrument to be the free act and deed of said corporation.

Cecilia T. Peterson  
Notary Public, Ramsey County, Minnesota.  
My commission expires April 2, 1966

Accepted by the Council December 21 A. D. 1961.  
Approved December 21 A. D. 1961.  
James M. Hayden  
Village Clerk, Maplewood, Minn.

Accepted and approved this 22nd day of December, A. D. 1961.  
Alvah DeCrampton  
Flat Commission Milton Brown  
Commissioner of Public Works

Recorded Dec. 28, 1961.  
Abstract # 1553654