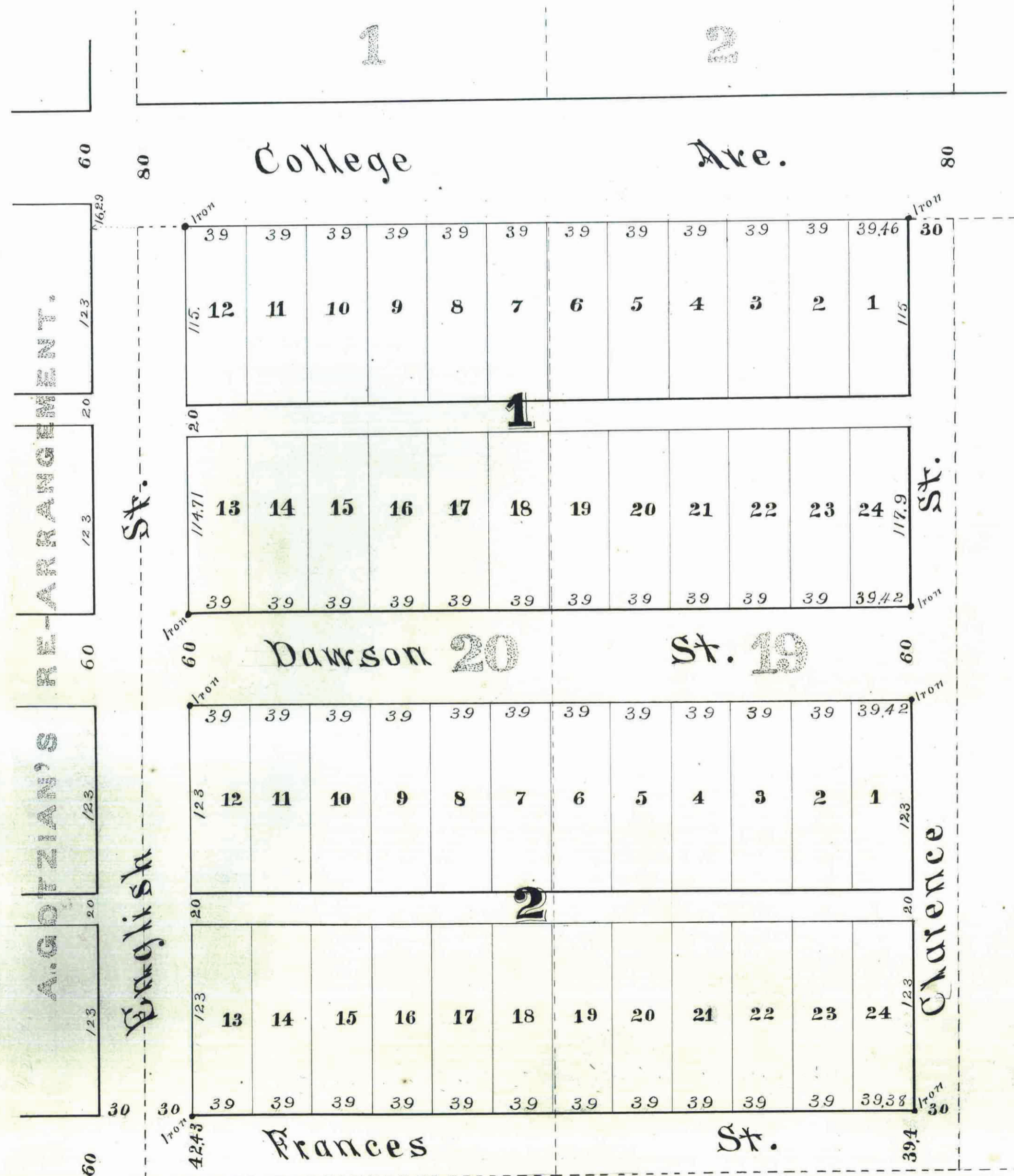


BERGMAN'S

DIVISION.

SCALE 1 INCH = 60 FEET.



The Solomon Bergman and Julia Bergman his wife hereby certify that we are the owners of Lots 19 & 20 "Houses for the Homeless" as the same is recorded in the office of the Register of Deeds for Ramsey County Minnesota, and that we have caused the same to be surveyed and platted as Bergman's Division as herein and hereon designated and we do hereby give and dedicate to the public and for the public use forever all the streets and alleys as on this map or plat designated.

In witness whereof we have hereunto set our hands and seals this 20th day of June AD 1884

In presence of
J. Knauft
Paul Knauft }

Solomon Bergman Seal
Julia Bergman Seal

State of Minnesota. } ss. Be it known that on this 20th day of June AD 1884 before me personally came
 County of Ramsey. } Solomon Bergman and Julia Bergman his wife to me known to be the identical persons described in and who executed the foregoing instrument and who acknowledged that they executed the same of their own free act and deed for the uses and purposes therein expressed.

J. Knauft
 Notary Public

St Paul Minn June 19th 1884.

I hereby certify to having surveyed and platted the property as described on this map as Bergman's Division and have placed iron monuments at the corners of each and every block as shown on this map and the same is correct.

H. S. Potts
 Surveyor

State of Minnesota } ss. Personally appeared before the undersigned this 20th day of June AD 1884
 County of Ramsey. } H. S. Potts to me well known to be the identical person who surveyed and platted the hereon designated and described piece or parcel of land and who executed the certificate of the survey thereof, and he acknowledged the same to be true and correct and his free act and deed for the uses and purposes therein expressed.

Wm H Buckelw. Notary Public

Approved June 20th 1884.

S. O. Holson
J. O. Stanley } PLAT
 Commission.

St Paul Minn June 1884
 Taxes Paid and transfer entered
J. J. M. Cardy
 County Auditor per Deau
 Ramsey Co
 Minn

STATE OF MINNESOTA, } ss.
 County of Ramsey.
 OFFICE OF THE REGISTER OF DEEDS.
 This is to certify that the within instrument was filed for Record in this office, at St. Paul, on the 20th day of June A. D. 1884 at 5 o'clock P. M., and that the same was duly recorded in Book *47* of Plats page *47*
R. Stanley
 Register of Deeds.
 By _____ Deputy.

This plat document is an UNOFFICIAL copy of a Subdivision Plat or Registered Land Survey and is made available for information purposes only.
 To obtain an official copy please contact the Ramsey County Recorder's Office.